

# Housekeeping

- ▶ This event is being recorded; Event will be available On Demand after the event at the main training page

<https://clu-in.org/conf/itrc/SBR/>

- ▶ If you have technical difficulties, please use the Q&A Pod to request technical support
- ▶ Need confirmation of your participation today?
  - ▶ Fill out the online feedback form and check box for confirmation email and certificate



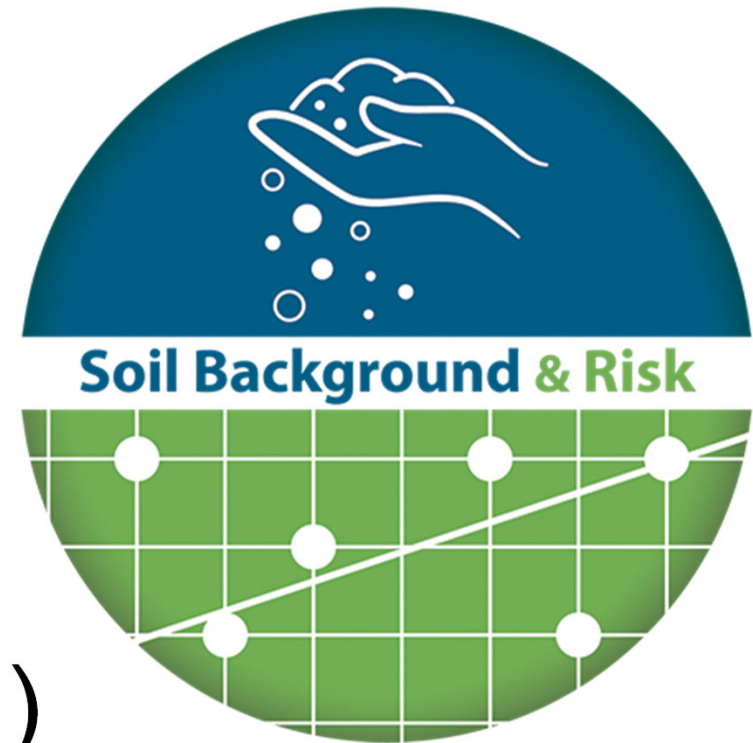
**ERIS**  
ENVIRONMENTAL RESEARCH  
INSTITUTE OF THE STATES

Copyright 2020 Interstate Technology & Regulatory Council,  
1250 H Street, NW Suite 850 | Washington, DC 20005



Advancing  
Environmental  
Solutions

# Soil Background & Risk Assessment (SBR-1, 2021)



Sponsored by: Interstate Technology and Regulatory Council ([www.itrcweb.org](http://www.itrcweb.org))

Hosted by: US EPA Clean Up Information Network ([www.clu-in.org](http://www.clu-in.org))

# ITRC – Shaping the Future of Regulatory Acceptance

- ▶ Host Organization



- ▶ Network - All 50 states, PR, DC

- ▶ Federal Partners



DOE



DOD



EPA

- ▶ ITRC Industry Affiliates Program



- ▶ Academia

- ▶ Community Stakeholders

- ▶ Disclaimer

- ▶ <https://sbr-1.itrcweb.org/about-itrc/#disclaimer>

- ▶ Partially funded by the US government

- ▶ ITRC nor US government warranty material
  - ▶ ITRC nor US government endorse specific products

- ▶ ITRC materials available for your use – see [usage policy](#)



itrcweb.org



facebook.com/  
itrcweb



@ITRCWEB



linkedin.com/  
company/itrc



ERIS  
ENVIRONMENTAL RESEARCH  
INSTITUTE OF THE STATES

<https://www.itrcweb.org/>

# SBR Trainers

## **Bonnie Brooks**

Washington Department of  
Ecology

[bonnie.brooks@ecy.wa.gov](mailto:bonnie.brooks@ecy.wa.gov)

## **Charlie DeWolf, Ph.D., P.G.,**

Trihydro Corporation

[cdewolf@trihydro.com](mailto:cdewolf@trihydro.com)

## **Brady Johnson**

Idaho Department of Environmental Quality

[brady.johnson@deq.idaho.gov](mailto:brady.johnson@deq.idaho.gov)

## **Chrissy Peterson**

EHS Support, LLC.

[chrissy.peterson@ehs-support.com](mailto:chrissy.peterson@ehs-support.com)

## **Claudio Sorrentino**

Department of Toxic Substances Control  
(California)

[claudio.sorrentino@dtsc.ca.gov](mailto:claudio.sorrentino@dtsc.ca.gov)

## **Karen Thorbjornsen**

APTIM

[karen.thorbjornsen@aptim.com](mailto:karen.thorbjornsen@aptim.com)

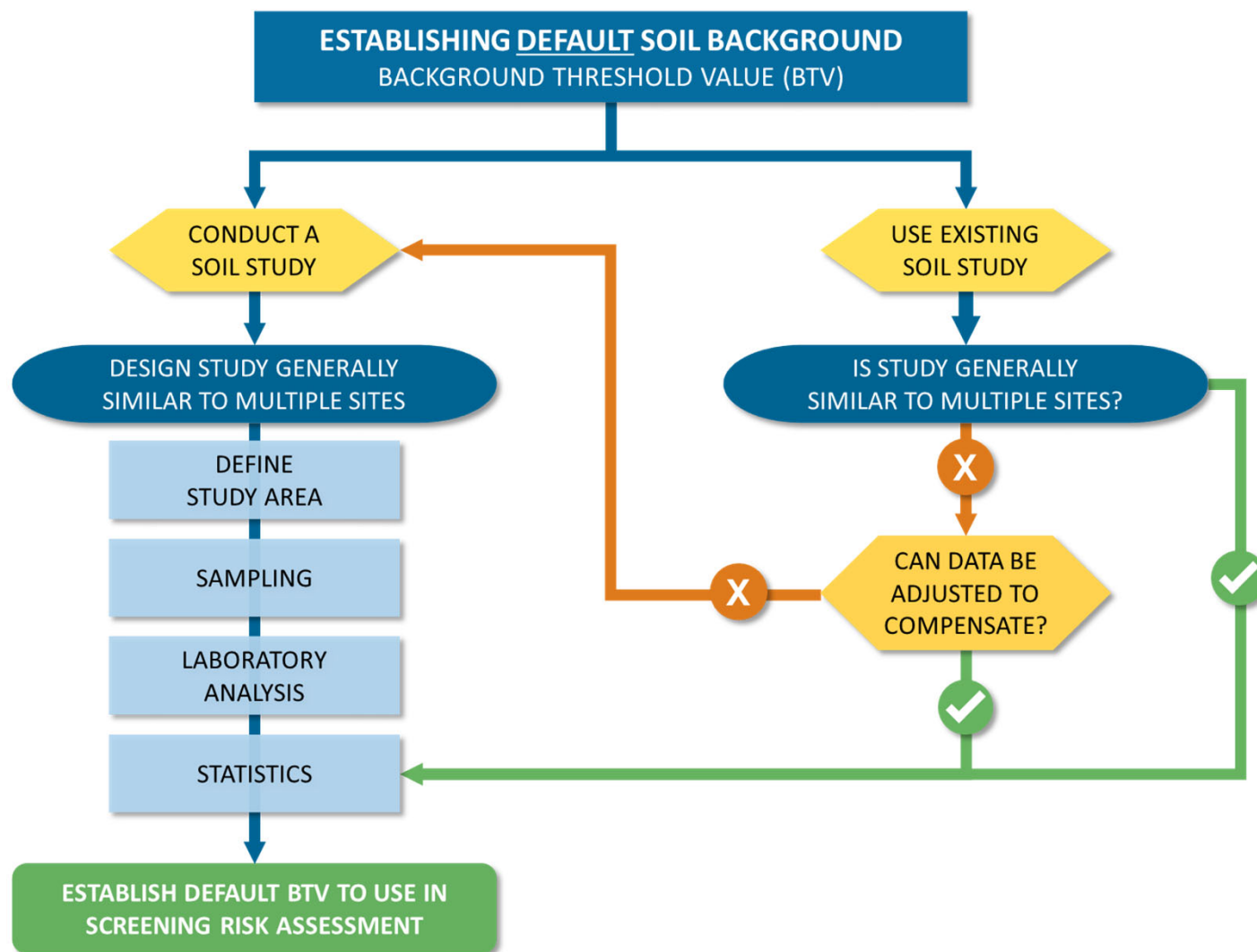


**ERIS**  
ENVIRONMENTAL RESEARCH  
INSTITUTE OF THE STATES

# SBR Training Videos

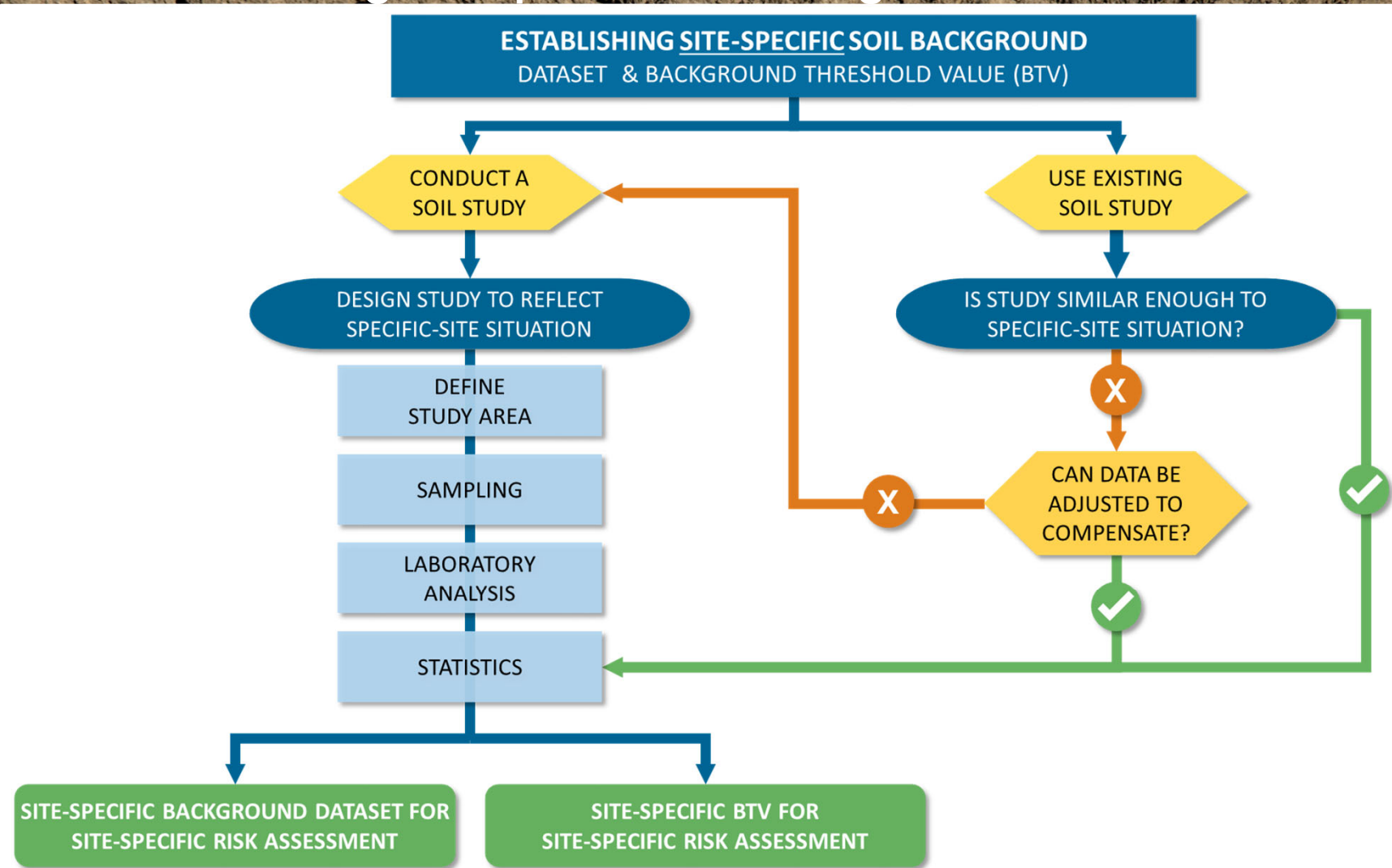


# Establishing Default Soil Background Flowchart

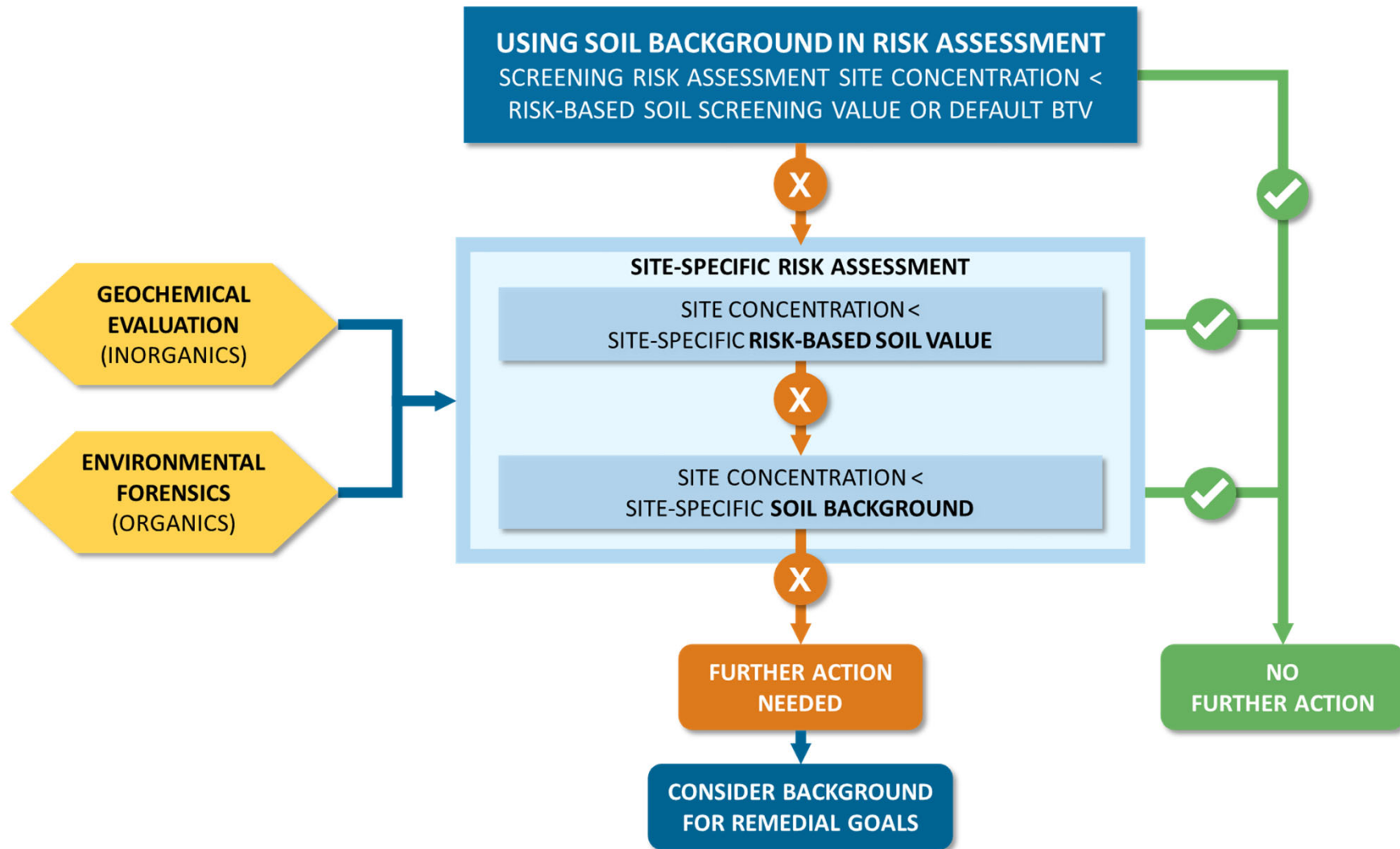




# Establishing Site-specific Soil Background Flowchart



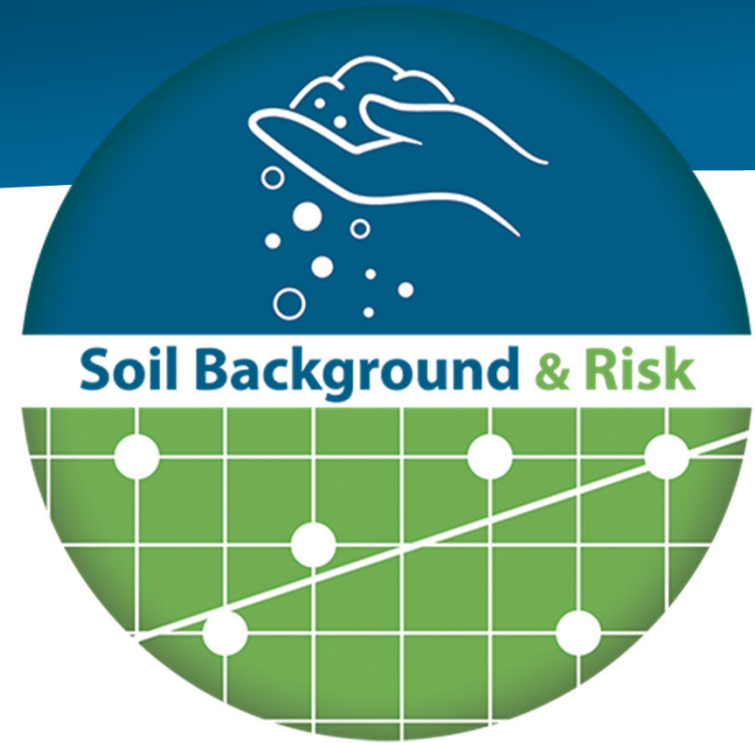
# Using Soil Background in Risk Assessment Flowchart





# Questions

Please use the Q&A Pod to ask questions for the Expert Panelists.



**ERIS**  
ENVIRONMENTAL RESEARCH  
INSTITUTE OF THE STATES

<https://clu-in.org/conf/itrc/SBR/>