



## **Welcome to the CLU-IN Internet Seminar**

Area-Wide Planning Coordination Opportunities

Sponsored by: OBLR

Delivered: April 27, 2011, 2:00 PM - 3:30 PM, EDT (1:00 PM-2:30 PM CDT)

*Instructor:*

*Charlie Bartsch, Senior Advisor for Economic Development, Office of Solid Waste and Emergency Response, US EPA (bartsch.charlie@epa.gov or 202-566-1054)*

*Moderator:*

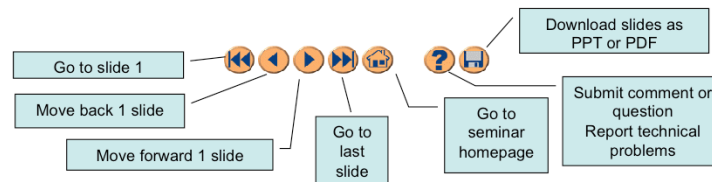
*Michael Adam, EPA Technology Innovation and Field Services Division, (adam.michael@epa.gov or 703-603-9915)*

Visit the Clean Up Information Network online at [www.cluin.org](http://www.cluin.org)

1

# Housekeeping

- Please mute your phone lines, Do NOT put this call on hold
  - press \*6 to mute #6 to unmute your lines at anytime (or applicable instructions)
- Q&A
- Turn off any pop-up blockers
- Move through slides using # links on left or buttons



- This event is being recorded
- Archives accessed for free <http://clu.in.org/live/archive/>

2

Although I'm sure that some of you have these rules memorized from previous CLU-IN events, let's run through them quickly for our new participants.

Please mute your phone lines during the seminar to minimize disruption and background noise. If you do not have a mute button, press \*6 to mute #6 to unmute your lines at anytime. Also, please do NOT put this call on hold as this may bring delightful, but unwanted background music over the lines and interrupt the seminar.

You should note that throughout the seminar, we will ask for your feedback. You do not need to wait for Q&A breaks to ask questions or provide comments. To submit comments/questions and report technical problems, please use the ? Icon at the top of your screen. You can move forward/backward in the slides by using the single arrow buttons (left moves back 1 slide, right moves advances 1 slide). The double arrowed buttons will take you to 1<sup>st</sup> and last slides respectively. You may also advance to any slide using the numbered links that appear on the left side of your screen. The button with a house icon will take you back to main seminar page which displays our agenda, speaker information, links to the slides and additional resources. Lastly, the button with a computer disc can be used to download and save today's presentation materials.

With that, please move to slide 3.

# **DOT Resources Available to the Area-Wide Planning Pilot Projects**

Federal Transit Administration (FTA)  
And  
Federal Highway Administration (FHWA)

## What this webinar will cover...

- **Surface transportation program** formula grants
  - *Roads, highways, congestion mitigation, and enhancement projects*
- **Transit construction and operations** grants
  - *Bus and bus facilities grants*
  - *“New Starts” and “Small Starts”*
  - *Formula grants for non-urbanized areas*
  - *Jobs access and reverse commute program*
- **Metropolitan planning organization** formula grants
  - *Assists metro areas plan for the development and management or multimodal transportation systems*

4

## **Transportation Program Activities, With Links to BF/AWP Redevelopment Needs**

- In March 2009, DOT re-affirmed its brownfield policy
  - *Transportation funding can be used for cleanup at sites integral to transportation system development/upgrades*
- DOT highway/transit construction/modernization/rehab, enhancement programs can support related revitalization by:
  - *(1) helping upgrade existing facilities*
  - *(2) offer transportation amenities that improve access to – and marketability of – sites*
  - *(3) fund facilities and structures that serve as part of the remedial solution*

5

## **Transportation-BF/AWP Redevelopment: Project Connections in Practice**

- Traffic flow improvements
- Bus and rail system modernization and rehabilitation
- Transit facility construction
- Pedestrian and bicycle programs, facilities
- Historic preservation/rehabilitation/operation of historic transportation buildings or facilities
- Preservation of abandoned rail corridors
- Planning

***AWP potential*** – creative integration of a range of transportation/related projects into area-wide revitalization efforts

## **Transportation-BF/AWP Redevelopment: Project Links in Practice**

- Traffic flow improvements
- Bus and rail system modernization and rehabilitation
- Transit facility construction
- Pedestrian and bicycle programs, facilities
- Historic preservation/rehabilitation/operation of historic transportation buildings or facilities
- Preservation of abandoned rail corridors
- Planning

***AWP potential*** – creative integration of a range of transportation/related projects into area-wide revitalization efforts

## **Surface Transportation Program Formula Grants**

**Provides the greatest flexibility in the use of funds:**

—may be used by States and localities for projects on any Federal-aid highway, including

- the NHS
- bridge projects on any public road
- transit capital projects
- public bus terminals and facilities



# Surface Transportation Program Formula Grants

- Capital Funding for
  - public transportation capital improvements
  - car and vanpool projects
  - fringe and corridor parking facilities
  - bicycle and pedestrian facilities
  - intercity or intracity bus terminals and bus facilities
- Planning activities
  - surface transportation planning activities
  - wetland mitigation
  - transit research and development
  - environmental analysis



## **Surface Transportation Program Formula Grants- Things to Consider**

- Eligibility:
  - States
  - Localities
- Funding:
  - Once the funds are distributed to the States,
    - 10% set aside for safety construction activities
    - 10% set aside for transportation enhancements, which encompass a broad range of environmentally related activities

## **Surface Transportation Program Formula Grants- Things to Consider**

- Funding (continued):
  - STP funds are distributed among various population and programmatic categories within a State.
    - Some program funds are made available to metropolitan planning areas containing urbanized areas over 200,000 population
    - STP funds are also set aside to areas under 200,000 and 50,000 population.

## **Transit Construction and Operations Grants**

- Bus and Bus Facilities Grants
  - Provides capital assistance for new and replacement buses, related equipments and bus facilities
  - Bus Testing Facility program uses one facility to test new bus models for reliability, safety, fuel economy, noise, and maintainability
  - Discretionary Funds



12

## Bus and Bus Facilities Grants- Things to Consider

### –Eligibility

- States and local governments
- subrecipients:
  - public agencies,
  - private companies engaged in public transportation
  - private non-profit organizations.

## Bus and Bus Facilities Grants- Things to Consider

- Eligible Activities:
  - purchasing of buses for fleet and service expansion
  - bus maintenance and administrative facilities
  - bus preventive maintenance
  - transfer facilities
  - transportation centers
  - park-and-ride stations
  - passenger amenities such as passenger shelters and bus stop signs
  - shop and garage equipment



# **Transit Construction and Operations Grants**

## **Major Capital Investments (New Starts & Small Starts)**

- New Starts provides funds for construction of new fixed guideway systems or extensions to existing fixed guideway systems
  - Fixed Guideway includes: heavy rail, commuter rail, light rail, monorail, trolleybus, ferryboats, that portion of motor bus service operated on exclusive or controlled rights-of-way, and high-occupancy-vehicle (HOV) lanes



## **Major Capital Investments (New Starts & Small Starts)**

- Small Starts provides funds to capital projects that either:
  - meet the definition of a fixed guideway for at least 50 percent of the project length in the peak period
  - or**
  - are corridor-based bus projects with 10 minute peak/15 minute off-peak headways or better while operating at least 14 hours per weekday.



## **Major Capital Investments (New Starts & Small Starts)**

- Things to Consider:
  - Discretionary Funding
  - Eligibility
    - public bodies and agencies: transit authorities and other state and local public bodies and agencies
    - states, municipalities, other political subdivisions of states
    - public agencies and instrumentalities of one or more states
    - certain public corporations, boards, and commissions established under state law.

## **Major Capital Investments (New Starts & Small Starts)**

- Things to Consider (continued)
  - Eligible Activities
    - light rail,
    - rapid rail (heavy rail)
    - commuter rail
    - monorail
    - A busway/high occupancy vehicle (HOV) facility
    - an extension of any of these eligible activities

## **Transit Construction and Operations Grants**

### **Formula Grants for Other than Urbanized Areas**

- Formula based and provides funding to states for the purpose of supporting public transportation in rural areas (areas with population of less than 50,000)
- Funds can be used to provide access to individuals who live in rural areas to shopping, medical appointments, jobs and connections to more distant locations.

## **Formula Grants for Other than Urbanized Areas**

- Eligible Activities
  - capital, operating, and administrative expenses for public transportation projects that meet the needs of rural communities
    - capital projects
    - operating costs of equipment and facilities for use in public transportation
    - acquisition of public transportation services, including service agreements with private providers of public transportation services

## **Formula Grants for Other than Urbanized Areas – Things to Consider**

- Eligibility
  - State or Indian tribe that receives a Federal transit program grant directly from the Federal Government
  - Subrecipients
    - State or local governmental authority
    - nonprofit organization
    - operator of public transportation or intercity bus service that receives federal transit program grant funds indirectly through a recipient.
- The state must use 15 percent of its annual apportionment to support intercity bus service

21

## **Transit construction and operations grants**

- **Job Access and Reverse Commute Program**

- JARC services link predominately low income communities to suburban jobsites.



Technical Assistance is available through

- JobLinks
  - Easter Seals Project ACTION (Accessible Community Transportation in Our Nation)
  - The National Transit Institute at Rutgers University
  - Multi-State Technical Assistance Program (MTAP)

## **Job Access and Reverse Commute Program- Things to Consider**

- Eligibility:
  - States and public bodies are designated recipients
  - Subrecipients:
    - private non-profit organizations,
    - State or local governments
    - operators of public transportation services, including private operators of public transportation services.

## **Job Access and Reverse Commute Program- Things to Consider**

- Eligible Activities
  - Capital, planning and operating expenses for projects that transport low income individuals to and from jobs and activities related to employment, and for reverse commute projects.



## **Job Access and Reverse Commute Program- Things to Consider**

- Funding is formulaic:
  - FTA apportions 60 percent of funds among designated recipients in large urbanized areas
  - 20 percent of funds to the states for small urbanized areas
  - 20 percent of funds to the states for rural and small urban areas under 50,000 in population
- There is a 20% cost share requirement

## **Metropolitan Planning Organization Formula Grants**

- **Metropolitan & Statewide Planning**
  - Funds may be used for projects that:
    - promote economic vitality in the area, including projects that increase efficiency and productivity
    - Increase transportation safety
    - Increase access to transportation
    - Promote energy conservation, promote consistency between transportation improvements and State and local planned growth and economic development patterns
    - Emphasize infrastructure reuse

## **Metropolitan & Statewide Planning (Continued)**

- Things to Consider When Evaluating if This is an Option
  - State Departments of Transportation and Metropolitan Planning Organizations are eligible for grants
  - Funds are apportioned to states by a formula; these funds, in turn, are sub-allocated by states to MPOs
  - There is a 20% cost-share requirement for projects funded under the program.

## *Amtrak station and environs -- Emeryville, CA*

- City and developers constructed an Amtrak station on a parcel that was once a Chevron tank facility
- Surrounding development -- Emery Station 1 (ES1), 247,000 square feet of office; ES3 consists of a parking structure under 100 residential units
- Downtown expanded as TOD, and the city worked with EPA to develop site into a transit center
- Pedestrian bridge was built with DOT funds, access roads within the project being used as ICs



## ***Banner Bank – Boise, ID***

- Deteriorating parking garage near expanding edge of downtown Boise
- Built 1963, partially closed in 2000; major structural concerns



### ***Transportation \$\$ Key Leverage***

- \$324,000 in highway district funds
- \$100,000 from Idaho Power to offset up-front energy efficiency costs

### ***Results***

- \$25 million private investment, \$370,000 annual tax revenues, 650 new downtown jobs
- Significant environmental benefits
  - 92% construction waste recycled
  - LEED platinum certified
  - All rainwater, graywater reused
  - 65% energy efficiency achieved
  - 95% reuse efficiency



## ***ELATI LIGHT RAIL FACILITY***

### ***Denver/Englewood, CO***

- A former General Iron Works plant site
- Site was underused and filled with foundry waste



#### ***Transportation \$\$ Leveraged***

- FTA and FHWA worked with the CDOT and RTD to plan and fund this project

- ***Results***

- \$40 million in Federal, State, and Local funds leveraged for this project
- 311 permanent maintenance, transportation and administrative jobs created
- Significant environmental benefits from expanded light rail system



## *Montgomery Ward- Fort Worth, TX*

- Historic “white elephant” on a 45-acre site
- \$3.5 million DOT (CMAQ) for road and sidewalk infrastructure
- Other financing tools used  
Historic rehab tax credits, State tax abatements, fee waivers
- Today the site is a mixed use, multi-modal transit area that includes mixed income housing



*For additional examples and information....*

*Contact Charlie Bartsch at  
[bartsch.charlie@epa.gov](mailto:bartsch.charlie@epa.gov)*

*Aimee Storm at  
[storm.aimee@epa.gov](mailto:storm.aimee@epa.gov)*

*Rachel Deitz at  
[deitz.rachel@epa.gov](mailto:deitz.rachel@epa.gov)*

*Lilly Shoup at  
[Lilly.Shoup@dot.gov](mailto:Lilly.Shoup@dot.gov)*

*Make sure to visit EPA's brownfields web site:  
[www.epa.gov/brownfields](http://www.epa.gov/brownfields)*



# Resources & Feedback

- To view a complete list of resources for this seminar, please visit the [Additional Resources](#)
- Please complete the [Feedback Form](#) to help ensure events like this are offered in the future

**EPA** United States Environmental Protection Agency  
Technology Innovation Program

U.S. EPA Technical Support Project Engineering Forum  
Green Remediation: Opening the Door to Field Use: Session C (Green Remediation Needs and Emerging)  
Seminar Feedback Form

We would like to receive any feedback you might have that would make this service more valuable.  
Please take the time to fill out this form before leaving the site.

**YOUR NAME:**  
Last: \_\_\_\_\_  
First: \_\_\_\_\_  
Middle: \_\_\_\_\_  
Suffix: Mr, Ms, Dr, etc.: \_\_\_\_\_  
Mailing Address: \_\_\_\_\_  
City: \_\_\_\_\_  
State: \_\_\_\_\_  
Zip: \_\_\_\_\_

**E-mail address:**  
E-mail: \_\_\_\_\_

**Site of Seminar:**  
City: \_\_\_\_\_  
State: \_\_\_\_\_  
Zip: \_\_\_\_\_

☐ I would like to receive any feedback you might have that would make this service more valuable.

Need confirmation of your participation today?

Fill out the feedback form and check box for confirmation email.