



Welcome to the CLU-IN Internet Seminar
2011 CARE National Webinar
Sponsored by: CARE National Program

Delivered:

February 8, 2011, 1:00 PM - 3:00 PM, EST (18:00-20:00 GMT)

February 23, 2011, 1:00 PM - 3:00 PM, EST (18:00-20:00 GMT)

March 2, 2011, 1:00 PM - 3:00 PM, EST (18:00-20:00 GMT)

Instructors:

Marva King, CARE Grants Team Lead, Environmental Protection Agency, Washington, DC (king.marva@epa.gov)
Michelle Mandolia, CARE Measurements and Tracking Team Lead, Environmental Protection Agency, Washington, DC
(mandolia.michelle@epa.gov)

Moderator:

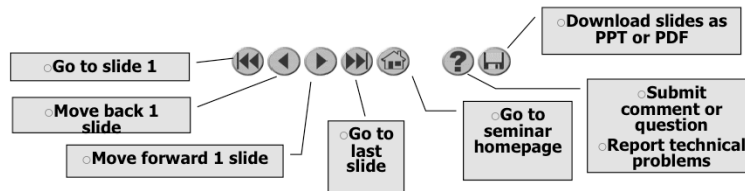
Jean Balent, U.S. EPA, Technology Innovation and Field Services Division (balent.jean@epa.gov)

Visit the Clean Up Information Network online at www.cluin.org

1

Housekeeping

- Please mute your phone lines, Do NOT put this call on hold
 - press *6 to mute #6 to unmute your lines at anytime (or applicable instructions)
- Q&A
- Turn off any pop-up blockers
- Move through slides using # links on left or buttons



- This event is being recorded
- Archives accessed for free <http://clu.in.org/live/archive/>

2

Although I'm sure that some of you have these rules memorized from previous CLU-IN events, let's run through them quickly for our new participants.

Please mute your phone lines during the seminar to minimize disruption and background noise. If you do not have a mute button, press *6 to mute #6 to unmute your lines at anytime. Also, please do NOT put this call on hold as this may bring delightful, but unwanted background music over the lines and interrupt the seminar.

You should note that throughout the seminar, we will ask for your feedback. You do not need to wait for Q&A breaks to ask questions or provide comments. To submit comments/questions and report technical problems, please use the ? Icon at the top of your screen. You can move forward/backward in the slides by using the single arrow buttons (left moves back 1 slide, right moves advances 1 slide). The double arrowed buttons will take you to 1st and last slides respectively. You may also advance to any slide using the numbered links that appear on the left side of your screen. The button with a house icon will take you back to main seminar page which displays our agenda, speaker information, links to the slides and additional resources. Lastly, the button with a computer disc can be used to download and save today's presentation materials.

With that, please move to slide 3.

Request for Proposals Q&A
Webcast – February/March 2011



What is CARE?

**CARE is a community-based,
community-driven,
program created to build
partnerships to help communities
understand and reduce toxic risks
from all sources.**



4

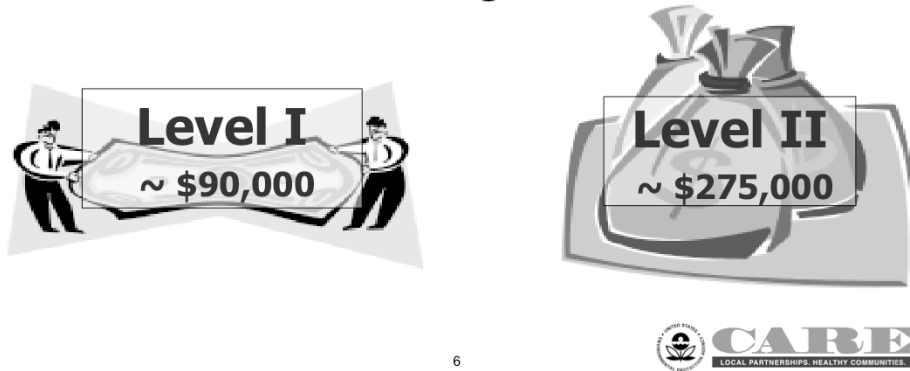


Why CARE?

- Respond to community requests for help
- Develop a means to address concerns that are beyond reach of national regulation
- Integrate agency programs to improve support for communities
- Mobilize new resources and use local knowledge to achieve results
- Develop community consensus on sources of risk and risk reduction options.

Funding CARE Communities

Nationally competed cooperative agreements will be awarded in two categories:



After completing the Level I CA (or similar process) the community would be ready to select and carry out activities to reduce risks

The community creates a collaborative problem solving partnership to improve understanding and set priorities.

Level II: Works to become self-sustaining

In the larger Level II agreements, the community selects and funds projects that reduce risk and improve the environment in the community.

CARE Goals

- **Reduce community exposures to toxic pollutants through collaborative action at the local level**
- **Help communities gain an understanding of potential sources of exposure to toxic pollutants**
- **Work with communities to set priorities for risk reduction activities**
- **Create self-sustaining, community based partnerships that will continue to improve the local environment**



CARE Strategies



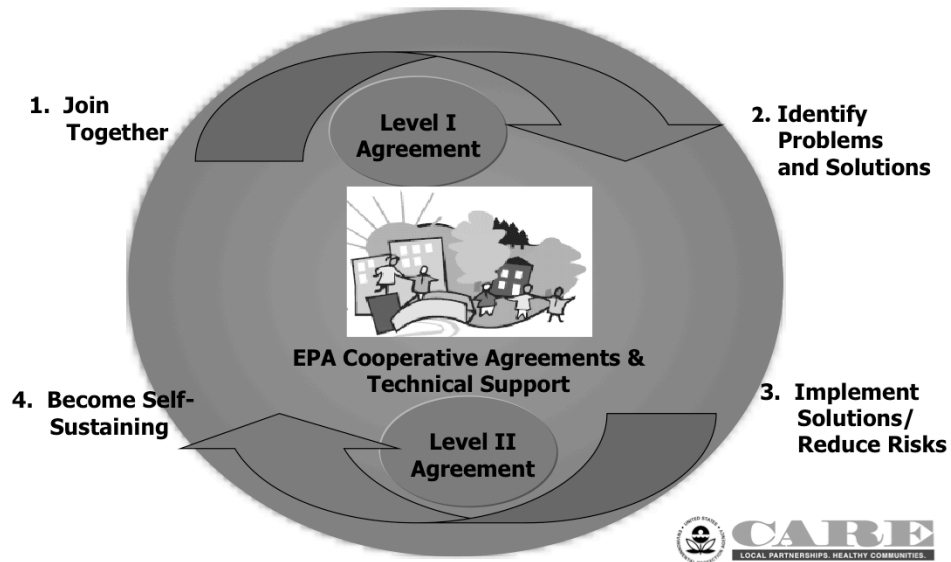
- **Build effective collaborative partnerships**
 - Including community organizations and residents, businesses, and governments and other appropriate partners
- **Provide information, tools, and technical assistance**
 - To help communities understand all potential sources of exposure to toxic pollutants
- **Build consensus in communities on priorities for effective action to reduce risks**

CARE Strategies cont'd.



- **Focus on action**
 - Mobilize local resources and utilize EPA voluntary programs to implement risk reduction activities
- **Facilitate networking among CARE communities**
 - To share experiences and lessons learned
- **Build long-term community capacity**
 - To continue improving the local environment

How CARE Works



NEW THIS YEAR

**Due to appropriation law concerns,
until Congress provides separate
authorization, EPA can only award
CARE Level II cooperative
agreements to applicants that have
already received CARE Level I
cooperative agreements**

CARE Creates Change in EPA

- CARE builds on current and past community-based programs (CBEP, Watersheds, EJ)
- Strong HQ – Regional partnership for implementation
- CARE's unique organizational structure **requires** us to work together across Agency stovepipes
- Changes the way environmental programs are framed so they are seen by EPA staff the way citizens see them
 - a cumulative risk approach
- Encourages two-way communication between EPA and communities



12

How has CARE learned / grown from previous Agency experiences with community-based environmental approaches?

Organizational and management aspects further multi media goal

Funding is appropriated and administered jointly through each NPM

Lead rotates among the four NPMs every two years

Strong focus on assessment and evaluation

Emphasis on action

Strong HQ – Regional partnership for implementation

CARE Grant Funding



- FY05 12 Grants= \$1.9M
 - FY06 16 Grants= \$2.6M
 - FY07 22 Grants= \$3.4M
 - FY08 18 Grants= \$2.5M
 - FY09 9 Grants= \$2.0M
 - FY10 14 Grants= \$2.1M
- 2 additional grants were funded with non-CARE money for a total of 16 awards



91grants to 78 communities = \$14M

Grants selection happens at both regional and HQ levels.

Kitty has been OW rep every year.

CARE is More than Money

EPA works directly with communities to provide:

- Technical support and information
- Scientific expertise and assessment
- Community planning to help identify and reduce risks
- EPA voluntary programs
- Networking opportunities
- Shared Learning



14

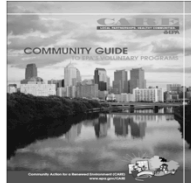
EPA's commitment: this slide tells everyone that we are going to do something new and what it is that we will do for CARE. It explains that it is not just a grant program, but a real new commitment of agency resources to work with communities.

CARE Tools for Communities

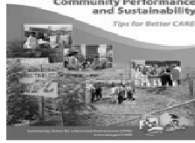
<http://www.epa.gov/care/publications.htm>

Community Guide to EPA's Programs

A guide of EPA programs of greatest benefit to communities



Promising Practices to Improve Community Performance and Sustainability



Promising Practices to Improve Community Performance and Sustainability

Successful practices used by 14 CARE communities

The CARE Resource Guide

A comprehensive map of EPA's on-line resources for communities



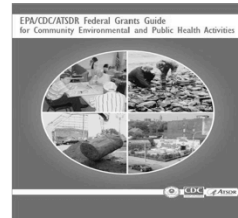
The Roadmap

A 10-step method for communities to assess and prioritize local risks



Grants Guide

A compilation of funding sources for community environmental and public health activities





CARE Contacts

- **Gale Bonanno, CARE Co-Chair**
 - Bonanno.gale@epa.gov
 - 202-564-2243
- **Marva King, CARE Co-Chair**
 - King.marva@epa.gov
 - 202-564-2599
- **For CARE RFP questions, please contact Dennis O'Connor at:**
 - Oconnor.dennis@epa.gov
 - 202-343-9213
- **CARE Hotline** **CARE Website**
1-877-CARE-909 www.epa.gov/care



17



Resources & Feedback

- To view a complete list of resources for this seminar, please visit the **Additional Resources**
- Please complete the **Feedback Form** to help ensure events like this are offered in the future

The screenshot shows a feedback form titled "U.S. EPA Technical Support Project Engineering Forum Green Remediations Opening the Door to Field Use Session C (Green Remediation Tools and Examples) Seminar Feedback Form". The form includes fields for First Name, Last Name, Daytime Phone Number, and Email Address. A checkbox labeled "Please send a copy of my feedback confirmation as a record of my participation to this address" is highlighted with a red circle. The form also includes a "Date of Seminar" field with a dropdown menu set to "December 15, 2009".

Need confirmation of your participation today?

Fill out the feedback form and check box for confirmation email.