



# **Welcome to the CLU-IN Internet Seminar**

## **Wastewater Treatment and Related Modeling Technical Workshop**

Sponsored by: EPA Office of Research and Development

Delivered: May 20, 2013, 2:00 PM - 3:00 PM, EDT (18:00-19:00 GMT)

*Instructor:*

- *Dr. Chris Impellitteri, U.S. EPA National Risk Management Research Laboratory  
([impellitteri.christopher@epa.gov](mailto:impellitteri.christopher@epa.gov))*

*Moderator:*

- *Jean Balent, U.S. EPA Technology Innovation and Field Services Division  
([balent.jean@epa.gov](mailto:balent.jean@epa.gov))*

Visit the Clean Up Information Network online at [www.cluin.org](http://www.cluin.org)

# Seminar Homepage

The screenshot shows the EPA website interface for a seminar. At the top, it identifies the EPA and the Technology Innovation and Field Services Division. The seminar title is 'Site Characterization for Munitions Constituents', sponsored by EPA Federal Facilities Forum & USACE. A 'Time/Date of Presentation' section indicates no current deliveries. Below this, there are three download links: 'Go to Seminar', 'Download slides in PowerPoint® format (26.7 MB/PPT)', and 'Download slides in Adobe PDF® format (37.1 MB/PPT)'. A 'Presentation Overview' section provides a detailed description of the seminar's content, including a list of topics and speakers. At the bottom, there are sections for 'Participation Tips and Suggestions', 'Go to Seminar' (with a button), 'Download Seminar For Future Reference', and 'After the seminar is complete, please view: Seminar Feedback Form'. A URL is provided at the very bottom: <http://www.du-in.org/conf/tio/munitions/>.

Join the seminar online

Download Slides

Feedback

# Housekeeping

- Entire broadcast offered live via Adobe Connect
  - participants can listen and watch as the presenters advance through materials live
  - *Some materials may be available to download in advance, you are **recommended to participate live via the online broadcast***
- Audio is streamed online through by default
  - Use the speaker icon to control online playback
  - If on phones: all lines will be globally muted
- Q&A – use the Q&A pod to privately submit comments, questions and report technical problems
- This event is being recorded and shared via email shortly after live delivery
- Archives accessed for free <http://clu.in.org/live/archive/>



# New online broadcast screenshot

The screenshot shows an Adobe Connect window titled "CLUIN Default Seminar Template - Adobe Connect". The main content area displays a slide with the text "View presentation live online here". Below the slide, it lists "Instructor(s):" and "Moderator(s):" with blank lines for names. At the bottom of the slide, it says "Visit the Clean Up Information Network online at [www.cluin.org](http://www.cluin.org) 1 of Total # of slides".

Callouts and annotations include:

- Control online audio:** A callout box on the left points to the audio control icon in the top toolbar. Below it is a separate audio control icon with a green speaker and a volume slider.
- Enlarge presentation:** A callout box on the top right points to the "Full Screen" button in the top toolbar.
- Information about Sponsors & Speakers:** A callout box on the right points to the "CLU-IN" logo in the top right corner of the slide.
- Submit private questions, comments or report technical problems:** A callout box on the right points to the "Q & A" section, which contains a text input field and a downward-pointing arrow.

# Web Conference Summary of April 18, 2013 Technical Workshop on Wastewater Treatment and Related Modeling

Christopher A. Impellitteri

May 20, 2013





# EPA Study of the Potential Impacts of Hydraulic Fracturing on Drinking Water Resources

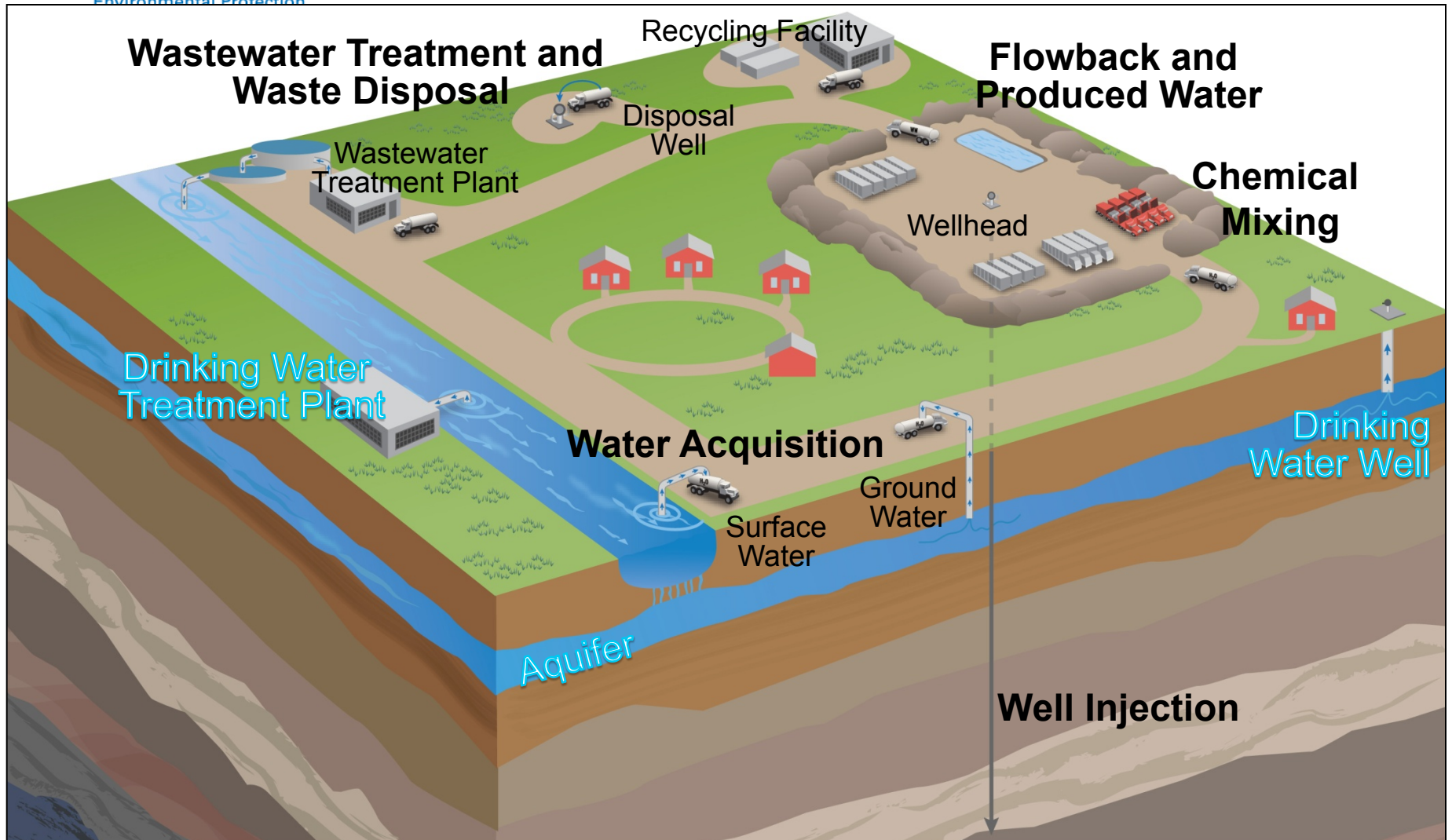
## *EPA Study Goals:*

- Assess the potential impacts of hydraulic fracturing on drinking water resources
- Identify the driving factors that affect the severity and frequency of any impacts



For more information: <http://www.epa.gov/hfstudy>

# Hydraulic Fracturing Water Cycle



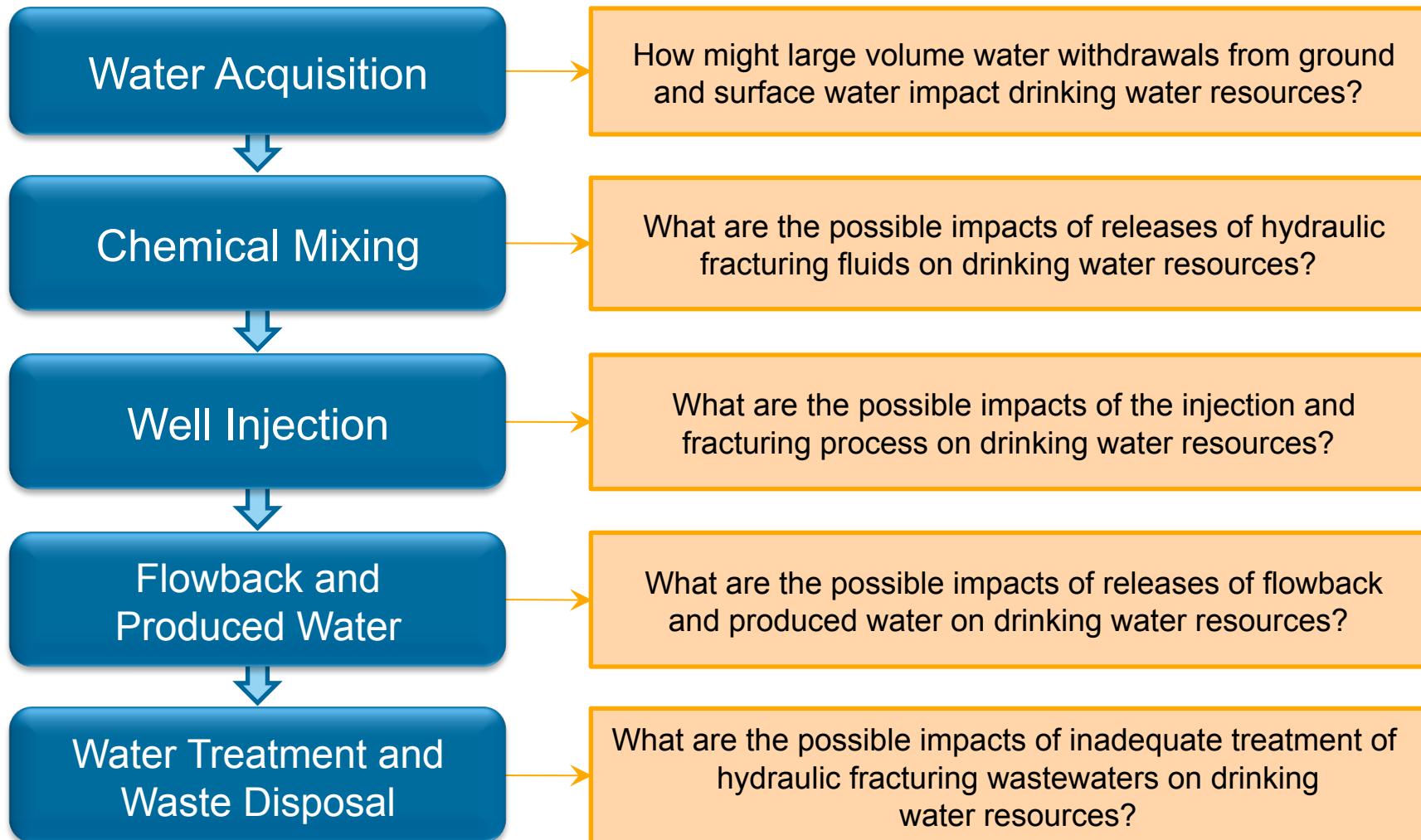
## WATER CYCLE STAGES

6

Water Acquisition → Chemical Mixing → Well Injection →  
Flowback and Produced Water → Wastewater Treatment and Waste Disposal

# Primary Research Questions

## Research Questions





# Secondary Research Questions

## Secondary Research Questions

## Research Projects

What are the common treatment and disposal methods for hydraulic fracturing wastewater and where are these methods practiced?



Literature Review  
Well File Review  
FracFocus Analysis

How effective are conventional POTWs and commercial treatment systems in removing organic and inorganic contaminants of concern in hydraulic fracturing wastewater?



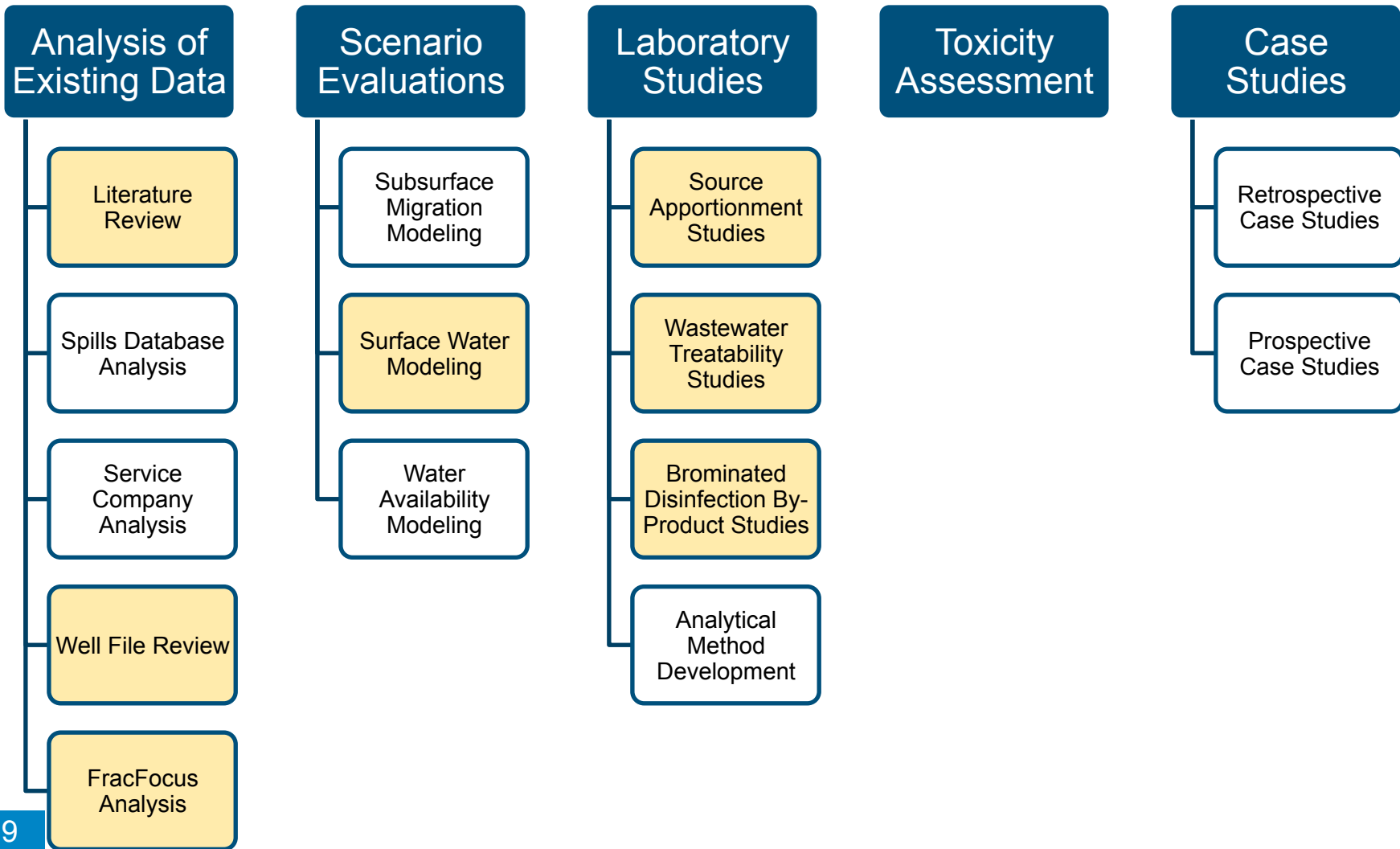
Literature Review  
Wastewater Treatability Studies

What are the potential impacts from surface water disposal of treated hydraulic fracturing wastewater on drinking water treatment facilities?



Literature Review  
Surface Water Modeling  
Source Apportionment Studies  
Brominated Disinfection By-Product Precursor Studies

# Types of Research Projects



# Literature Review

## *Analysis of Existing Data*

**Objective:** Collect information on wastewater treatment and disposal from hydraulic fracturing operations to inform project plans and interpretations of results

### Research Progress

- Evaluate information on wastewater treatment and disposal from hydraulic fracturing operations from existing papers and reports, focusing on peer-reviewed literature
- Follow procedures identified in study plan

### Next Step

- Continue to review and assess literature related to wastewater treatment and disposal according to research questions in the study plan

# Well File Review

## *Analysis of Existing Data*

**Objective:** Assess well construction and hydraulic fracturing operations as reported by nine oil and gas operators

### Research Progress

- Well-specific records:
  - Provided by nine oil and gas operators (includes confidential business information)
  - Includes hydraulic fracturing wastewater treatment and disposal practices for 332 wells hydraulically fractured in 2009 and 2010
- Extraction of available data from the well files is underway

### Next Steps

- Work with oil and gas operators to clarify information provided
- Analyze data to address research questions

# FracFocus Analysis

## *Analysis of Existing Data*

**Objective:** Collect information on water volumes and sources as reported by oil and gas companies

### Research Progress

- Extracted data, checked for quality issues and organized in a database for analysis
- Developed draft queries to address research questions

### Next Steps

- Analyze water usage
- Summarize data by water source or type

# Wastewater Treatability

## *Laboratory Studies*

**Objective:** Assess effectiveness of wastewater treatment processes on selected chemicals found in hydraulic fracturing wastewater

### Commercial Treatment Systems

- Field studies
- Collect influent, effluent and residuals samples
- Analyze concentrations of volatile organic compounds (VOCs), semivolatile organic compounds (SVOCs), anions, metals/inorganics, total dissolved solids (TDS) and radionuclides

### Wastewater Treatment Facility/ Biological Processes

- Bench studies with chemostat reactors
- Blend hydraulic fracturing wastewater with synthetic municipal wastewater
- Collect influent and effluent samples
- Monitor effects on biological processes within wastewater

# Surface Water Modeling

## Scenario Evaluations

**Objective:** Identify possible concentrations of selected chemicals at public water system intakes downstream from wastewater treatment facilities

- Collect model inputs from the National Pollutant Discharge Elimination System monitoring reports and USGS stream water quality and flow rate data
  - Use three modeling approaches to determine potential bromide and radium levels downstream
    - 1) Steady-state mass balance model
    - 2) Transient empirical model
    - 3) Hybrid empirical-numerical model
  - Run models with different discharge scenarios and stream flow scenarios based on data collected
- Monte Carlo simulation used to estimate uncertainty in output
- Confirm results with USGS tracer data and EPA Water Quality Simulation Package

# Source Apportionment

## *Laboratory Studies*

**Objective:** Identify proportion of hydraulic fracturing wastewater that may impact public water system intakes downstream from wastewater treatment facilities

### Sample Analyses

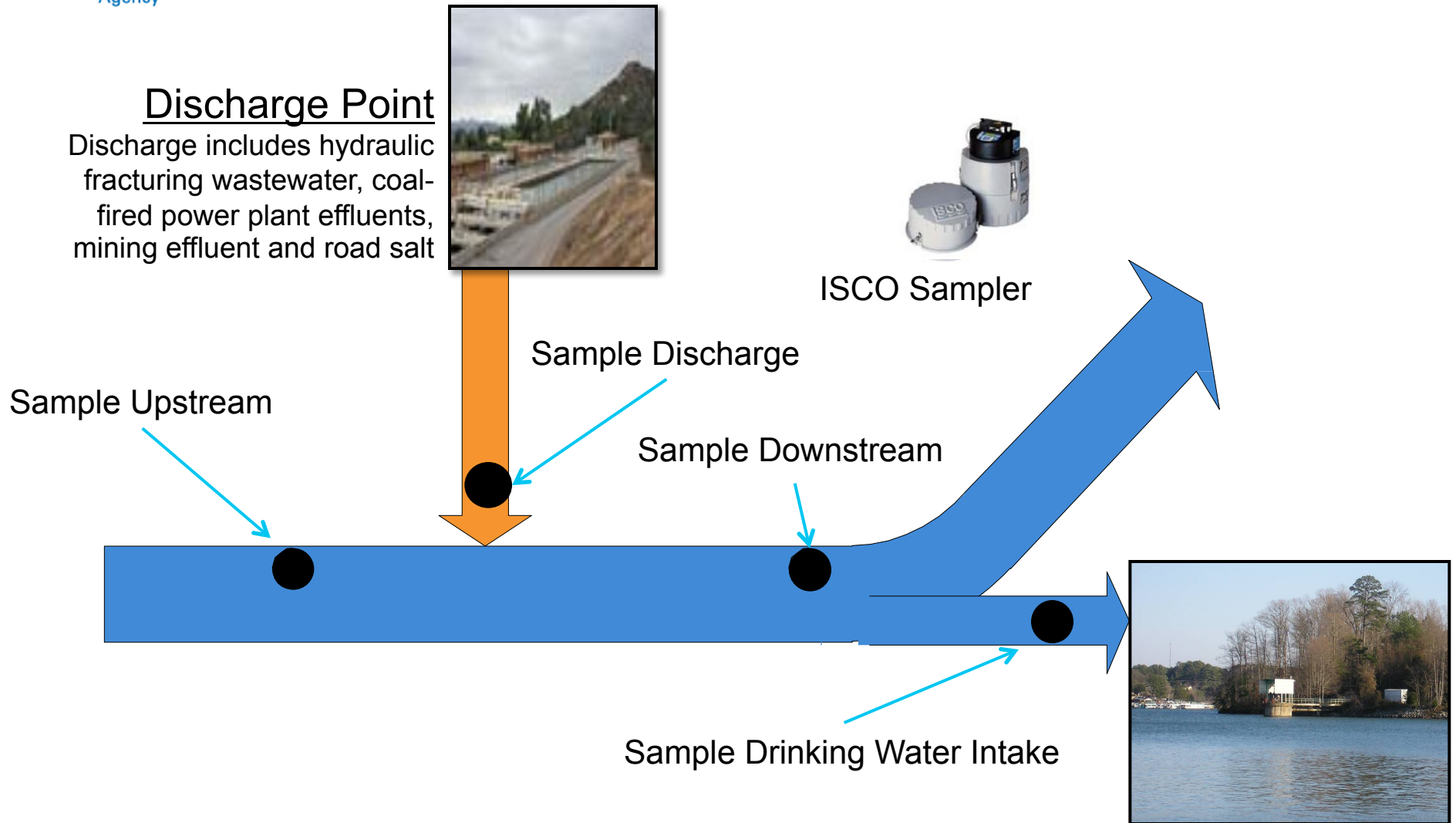
- Field studies on two rivers
- Collect samples upstream and various distances downstream from discharge
- Analyze samples for suite of elements and ions including strontium 87/86 ratios

### Modeling

- Compare two rivers using peer-reviewed models
- Identify and quantify contaminant source types using receptor models
- Receptor models include Unmix, Positive Matrix Factorization, Chemical Mass Balance



# Source Apportionment *Laboratory Studies*





# Brominated Disinfection By-Product Precursor Studies

## *Laboratory Studies*

**Objective:** Assess the contribution of hydraulic fracturing wastewater to formation of brominated disinfection by-products at public water systems

### **Total Trihalomethanes**

- Focus on the formation of brominated trihalomethanes
- Bench studies
- Compare equimolar concentrations of bromide in spiked laboratory water and blended effluents
- Maintain chloride:bromide ratio found in effluents in spiked waters

# Workshop Structure

- Two Sessions
  - Hydraulic Fracturing Wastewater Treatment
  - Current and Future Trends in Hydraulic Fracturing Wastewater Management
- Participants were from EPA, DOE, states, industry, academia and non-governmental organizations
  - Industry included: oil & gas companies, commercial laboratories and water treatment facilities
  - 51 participants present

# Session 1: Wastewater Treatment

## *Questions for Consideration*

Participants considered three questions

- What are some modern and potential future trends in reuse, recycling, zero-liquid discharge and commercial transport?
- How to manage, dispose and characterize residuals of hydraulic fracturing?
- What are the consequences of disposal via landfills or beneficial reuse?

# Session 1: Wastewater Treatment

## *Participant Comments*

### **Wastewater reuse/recycling**

- Trend is to 100% reuse and zero-discharge
  - Some participants stated that operators are targeting, and some have achieved, 100% reuse
  - Increased reuse/recycling is expected by some to lessen impacts to drinking water
- Where reuse is not available or economically feasible, management alternatives include underground injection or treatment/disposal
- Very different water treatment issues from area to area; there is no single solution to wastewater management

# Session 1: Wastewater Treatment

## *Participant Comments*

### **Chemical issues for reuse**

- Some operators are using water higher in TDS than in the past (especially with slickwater fracturing)
- Gel and cross linked formulations for use in high TDS waters is an active area of research
- Industry is searching for less toxic additives for fracturing fluids

# Session 1: Wastewater Treatment

## *Participant Comments*

### **Wastewater transport and mobile treatment**

- Costs to transport wastewater to treatment/reuse facilities can total 25-75% of water management costs
- Centralized treatment makes sense where there is a critical mass of well pads
- Mobile treatment units are promising for areas where pads are more sparse

# Session 1: Wastewater Treatment

## *Participant Comments*

### **Water sharing**

- Produced water is starting to be considered as an asset
- Depending on the location, there may be legal/liability issues with transporting wastewater for reuse by another entity
- Texas has recently changed regulations to facilitate water sharing



# Session 1: Wastewater Treatment

## *Participant Comments*

### **Beneficial reuse of solids**

- Sodium chloride (industrial uses, road salt) and calcium chloride (drilling mud) are commonly reused
- Improved characterization of solids from wastewater treatment is needed
- Concentration of more hazardous materials is a challenge
- Some feel it may be better to simply keep most/all of the waste solids down-hole

# Session 1: Wastewater Treatment

## *Participant Comments*

### **Disposal of solids in landfills**

- Residuals may go to municipal solid waste facilities
- Residuals mixed with inert material (e.g. sawdust) will not prevent leaching of chemicals
- There may be concerns for waste residuals going to landfills which have waste-to-energy programs
- One alternative to more expensive RCRA Subclass C (hazardous waste) landfills may be the use of specialized industrial landfills (as is the case in Pennsylvania)

## Participants considered six questions

- What are the contributions of selected contaminants from hydraulic fracturing relative to other potential sources of contamination?
- What are some applications of surface and subsurface modeling?
- How much flowback or produced water is created, and what happens to it?
- How do we currently monitor wastewater disposition?
- How do the projected volumes of wastewater compare to wastewater management capacity, including underground injection wells and treatment systems?
- What are the regional differences in wastewater quantity and quality and potential impacts on drinking water sources?

## **Relative contributions of hydraulic fracturing contaminants versus other contaminants**

- Challenging to determine relative contribution
- Look at a suite of chemicals
- Chloride may be better as a tracer in ground water vs. surface water
- Tiered approach (general water quality monitoring followed by in depth analysis if a parameter is “triggered”)

## **Possible modeling applications**

- Potential impacts from brackish water withdrawal to nearby freshwater aquifers
- Potential impacts from leachate in unlined construction/demolition landfills
- Economic models combined with system-based dynamic models to look at socio-economic issues involving water reuse

## Water volumes and dispositions

- Wastewater volumes vary
  - Flowback water volumes vary across regions and plays
  - Produced water volume changes over the life of the well
- Inconsistent data
  - Tracking/reporting standards and accessibility of data are very different from state to state
  - Several participants recommended more consistent reporting
  - Reporting on a regular bases could help prevent unsafe disposal
  - The practical aspects of tracking wastewater in large complex systems were noted
- Collaboration between industry and government to develop long-term water resource management plans and data

## Regional differences

- Water volumes
  - Marcellus and Utica formations are using much more water compared with western plays; wastewater volumes (total) are increasing
  - In the Bakken, less water is used and less water is returned
  - Slick water fracturing uses more water than gel fracturing (by factor of 2-3)
- Water quality
  - NE Marcellus wastewater has higher TDS but lower volumes (generally) relative to SW Marcellus
  - Oklahoma has a wide variation in water quality across plays

## Next Steps

Next workshops are:

- June 3 – Subsurface Modeling
- June 4 – Water Acquisition Modeling
- TBD – Hydraulic Fracturing Case Studies

Information on technical workshops can be found at: <http://www.epa.gov/hfstudy/techwork13.html>



## Disclaimer

The U.S. Environmental Protection Agency, through its Office of Research and Development, organized and conducted the Technical Workshop on Wastewater Treatment and Related Modeling. The summary presented here has been subjected to the Agency's peer and administrative review and has been approved for external publication. Any opinions expressed are those of the workshop participants and do not necessarily reflect the views of the Agency, therefore, no official endorsement should be inferred. Any mention of trade names or commercial products does not constitute endorsement or recommendation for use.

# New Ways to stay connected!

- [www.cluin.org](http://www.cluin.org)
- Follow CLU-IN on Facebook, LinkedIn, or Twitter



<https://www.facebook.com/EPACleanUpTech>



<https://twitter.com/#!/EPACleanUpTech>



<http://www.linkedin.com/groups/Clean-Up-Information-Network-CLUIN-4405740>

# Resources & Feedback

- To view a complete list of resources for this seminar, please visit the [Additional Resources](#)
- Please complete the [Feedback Form](#) to help ensure events like this are offered in the future

CLU-IN Home

Go to Seminar

Links

Feedback

Home

CLU-IN Studio

**EPA** United States Environmental Protection Agency **Technology Innovation Program**

U.S. EPA Technical Support Project Engineering Forum  
*Green Remediation: Opening the Door to Field Use Session C (Green Remediation Tools and Examples)*  
Seminar Feedback Form

We would like to receive any feedback you might have that would make this service more valuable.  
Please take the time to fill out this form before leaving the site.

First Name: Jean

Last Name: Balent

Daytime Phone Number: 703-603-9924

Email Address: balent.jean@epa.gov

Date of Seminar:  December 15, 2009

Delivery Media

Please send a copy of my feedback confirmation as a record of my participation to this address

Need confirmation of your participation today?

Fill out the feedback form and check box for confirmation email.