



HISTORICAL PHOTO ANALYSIS

ARMY GEOSPATIAL CENTER



**JOY POCHATILA, ENVIRONMENTAL
ANALYSIS TEAM LEAD**
703-428-6261,
JOY.POCHATILA@US.ARMY.MIL



US Army Corps of Engineers
BUILDING STRONG®



Army Geospatial Center



ORGANIZATION

- Conducting photogrammetric research and development since the 1920s
- Army Geospatial Center (AGC) created in 2009
 - ✓ Major Subordinate Command (Center) under the US Army Corps of Engineers
 - ✓ Co-located with ERDC's Geospatial Research Laboratory (formerly Topographic Engineering Center)
 - ✓ Provides geospatial information, domain expertise, training, and reach back capabilities
 - ✓ Engages in system development, acquisition, and geospatial technology integration
 - ✓ Designs and implements the Army Geospatial Enterprise (AGE)

FUNCTIONAL AREAS

- Enterprise Development and Acquisition Support
- Warfighter Geospatial Support and Production
- Systems Acquisition and Program Management
- Research, Development, Technology and Evaluation

FACILITIES

- Time Critical Users Site
- SECRET and TS/SCI (60k sq ft SCIF)

STAFF

- 350 Scientists and Engineers
- Professionally Certified/Licensed in:
 - ✓ Acquisition
 - ✓ Contracting
 - ✓ Engineering
 - ✓ GIS, Surveying, Geology
 - ✓ Program Management

FOOTPRINT

- Office of the Chief of Engineers; Pentagon, VA
- Transatlantic Division; Winchester, VA
- National Reconnaissance Office; Chantilly, VA
- US Army Intelligence Center of Excellence; Ft. Huachuca, AZ
- TRADOC Capability Manager – Geospatial; Ft. Leonard Wood, MO
- NGA Campus East; Springfield, VA (OCE/GGB Staff)
- High Res/3D Collection Lead (Afghanistan)

AGC has a VITAL MISSION to provide geospatial engineering in direct support to DoD.





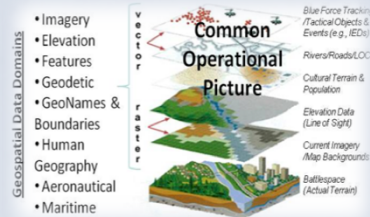
AGC PROGRAM AREAS



Research, Development, Technology and Evaluation



Enterprise Development and Support



Systems Acquisition and Program Management



Warfighter Geospatial Support and Production



CAPABILITIES

Geospatial Research and Engineering

Geospatial Enterprise Technologies

Advanced & Joint Concepts Technology Demonstrations (A/JCTDs)

Fluorescence

Remote Sensing/Image Analysis

Surveying/GPS/Navigation Terrain Reasoning & Awareness

Data Provisioning

Geospatial Net-Centric Experimentation

Modeling and Mapping Complex Social Systems

Spatio-Temporal Reasoning and Numerical Analysis

Systems of Systems Engineering and Architecture Development

Matériel Requirements Development

Standards/ Architecture Integration

Geospatial Technology Integration

Trade Studies

Acquisition Certification

Pilot Engineering

Enterprise Data Modeling

Technical Support

Develop and Field Matériel Capabilities

Application Development

Advanced & Joint Concepts Technology Demonstrations (A/JCTDs)

Full Lifecycle Acquisition Support

Geospatial Engineering and Intelligence Expertise

Systems Engineering and Requirements Integration

Emergency Response Systems

Program Management

Technical Support

Geospatial Support and Production

High-Resolution Terrain/EO Generation

Urban Information

GeoPDF

GPS Databases

Environmental Analysis

Transportation Analysis

Water Prediction/Analysis

Commercial & National Imagery Management & Dissemination

Common Map Background

AGE GeoGlobe

Reach-back Support / Training





AGC'S HISTORICAL PHOTO ANALYSIS



- **Why is HPA important?** GIS-based historical photo analysis (HPA) can focus restoration and remediation efforts, leading to overall **cost savings!**
- Identify potential areas of environmental concern on U.S. Military installations:
 - Hazardous, Toxic and Radioactive Waste (HTRW)
 - Unexploded Ordnance (UXO) under the Military Munitions Response Program (MMRP)
 - Landfill Locations, Groundwater Contaminate Pathways, and Shoreline Changes

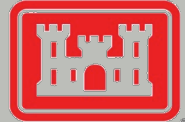


BUILDING STRONG®



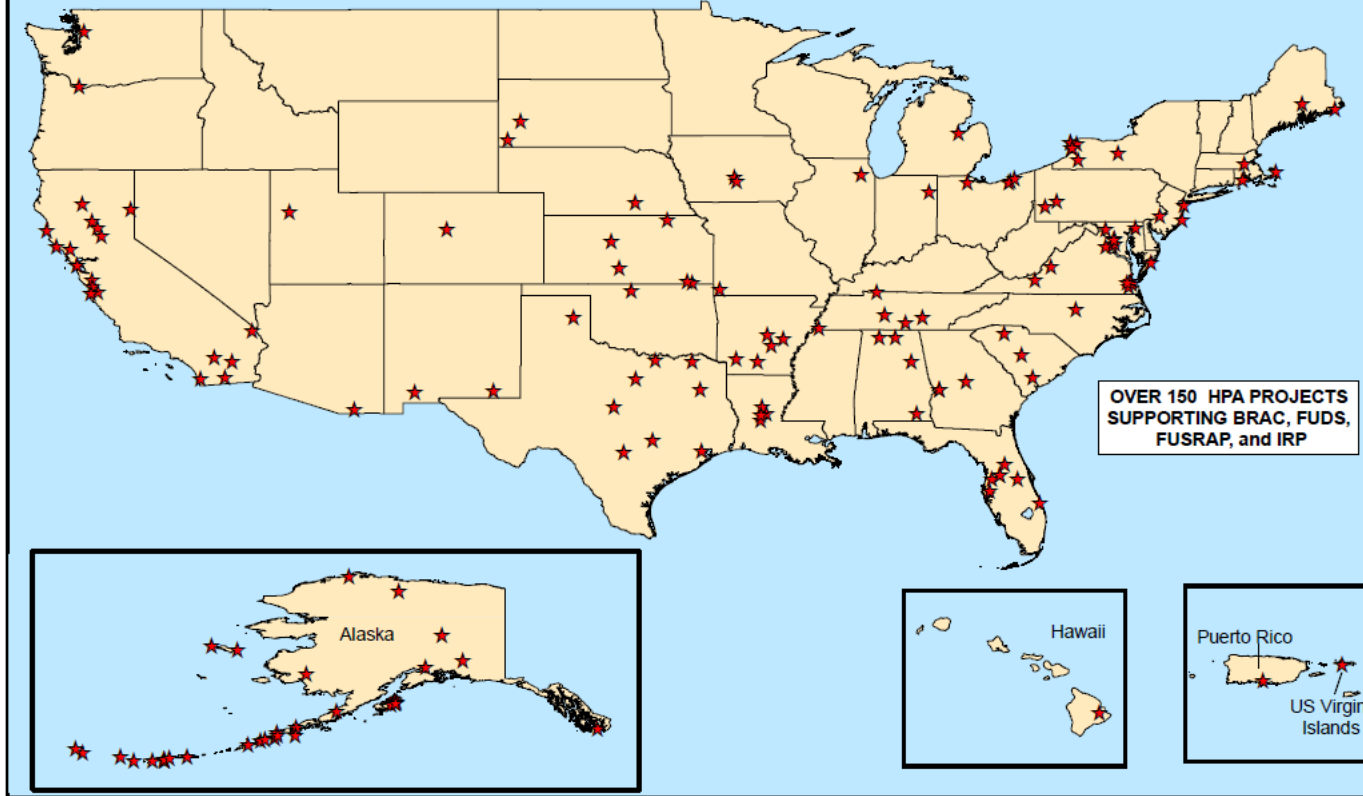


ENVIRONMENTAL PROJECTS



US Army Corps of Engineers
BUILDING STRONG.

HISTORICAL PHOTO ANALYSIS PROJECTS (1995 through 2013)



OVER 150 HPA PROJECTS
SUPPORTING BRAC, FUDS,
FUSRAP, and IRP



CUSTOMERS SUPPORTED

DA, Installation Management (ACSIM)
 Joint Personnel Recovery Agency
 U.S. Air Force - Aerospace Defense Command
 U.S. Army Engineering and Support Center, Huntsville
 U.S. Army Environmental Command
 U.S. Naval Engineering Facilities Command
 USACE - Alaska District
 USACE - Baltimore District
 USACE - Buffalo District
 USACE - Far East District

USACE - Fort Worth District
 USACE - Jacksonville District
 USACE - Little Rock District
 USACE - Louisville District
 USACE - New England District
 USACE - New York District
 USACE - Norfolk District
 USACE - Pittsburgh District
 USACE - Sacramento District
 USACE - Savannah District
 USACE - Tulsa District





CUSTOMIZED HPA SUPPORT



Research

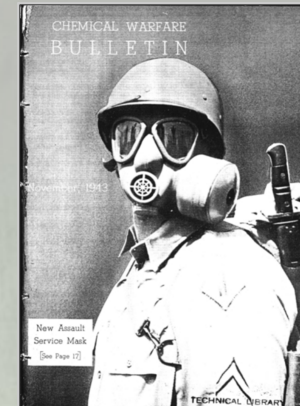
What were the previous military activities onsite?
When and where did the activities take place?

Photography/Imagery Acquisition

Convert hardcopy photos and film negatives into digital formats.

Imagery Geo-Rectification

Adding geographic reference to digital photos.



Analysis

What information can be learned from the photography?
Determine changes in activities over time and geographic extent.

GIS Data Production

Results of analysis delivered in SDSFIE-compliant GIS package.
GIS data are used in the field to ground truth analysis.

Hardcopy Report Production

All research, photos, and analysis are presented in a report that can be used in-house and for public meetings.





RESEARCH



- Review materials provided by customer.
- Literature review.
- Find and order film cans for viewing and scanning (National Archives, USGS, NOAA).
- Visit National Capital Area and local repositories to collect data (maps, documents, textural records, ground photos, etc).

PHOTOGRAPHIC ANALYSIS – SOUTHEAST

**COLD BAY – STORAGE DUMPS (UNKNOWN MATERIAL)
1943 AERIAL PHOTOGRAPH AND 1943 MAP**

02 August 1943
Probable location of Storage Dump No. 27
Probable location of Storage Dump No. 26
Gun Emplacement
Warehouse
Concrete Vault

Defense Plan, Appendix 3, Enumerated list of installations to be guarded by the 130th Infantry (02 February 1943)
Note: Full list in Appendix A.

Defense Plan Map: QM Installations to be guarded (02 February 1943)
Note: Full map and key are located in Appendix A.

Legend:
■ = Borrow Pit
□ = Structure
□ = Open Storage

There is open storage identified in these areas and it can be assumed they are the same indicated on the map to the right (to be protected during a commando raid). There is a structure near the bottom and middle of the image that may have stored munitions. It is identified as a concrete vault on Airfield and Garrison Map 21 of 39.

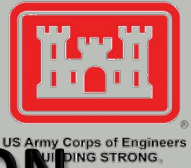
Data Sources: National Archives at College Park, Maryland and Anchorage, Alaska.

November 2012 Final Report – Cold Bay

Collection of aerial photos, maps, and textural records

BUILDING STRONG®





IMAGERY ACQUISITION NATIONAL ARCHIVES & RECORDS ADMINISTRATION

- AGC has capability to obtain digital scans of film negatives at the National Archives & Records Administration in College Park, MD.
- **No other federal agency or private company has this capability.**
- AGC Advantage: Digital scans can be obtained rapidly in order to meet customers' mission requirements.

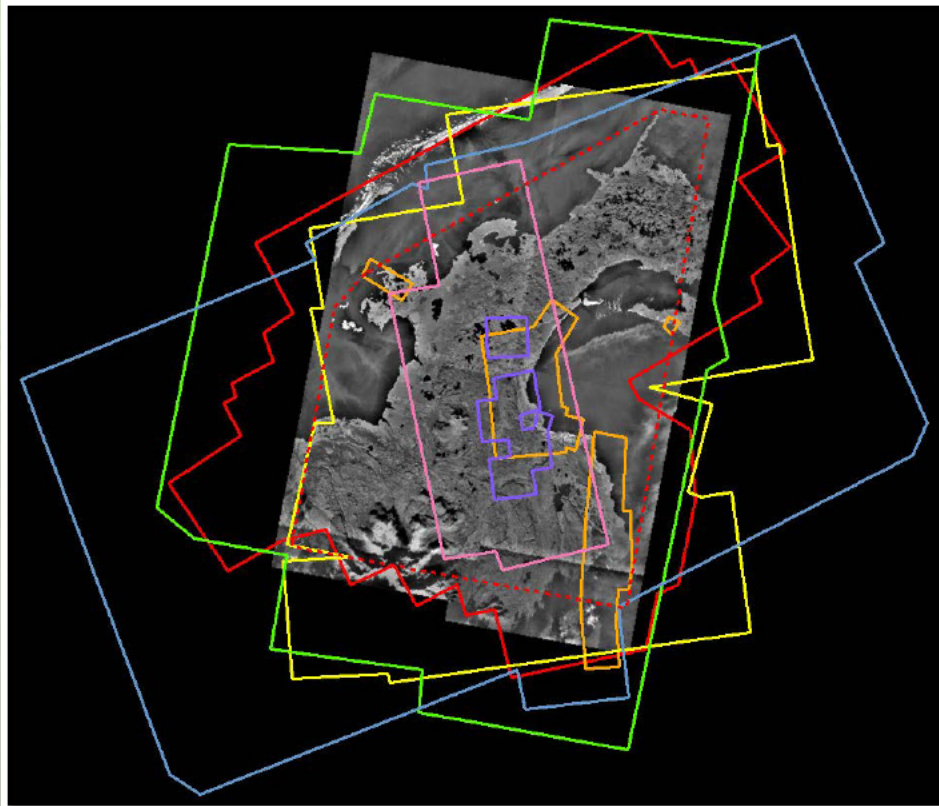


BUILDING STRONG®













PHOTOGRAPHY/IMAGERY RECTIFICATION



Aerial Photograph Coverage over Cold Bay AOI

-  1940's (1942-1944)
-  1950's (1953, 1955-1958)
-  1960's (1962, 1966)
-  1970's (1973, 1975-1976)
-  1980's (1983, 1987)
-  1990's (1995)
-  2000's (2001)
-  Cold Bay HPA Project Boundary

BUILDING STRONG®

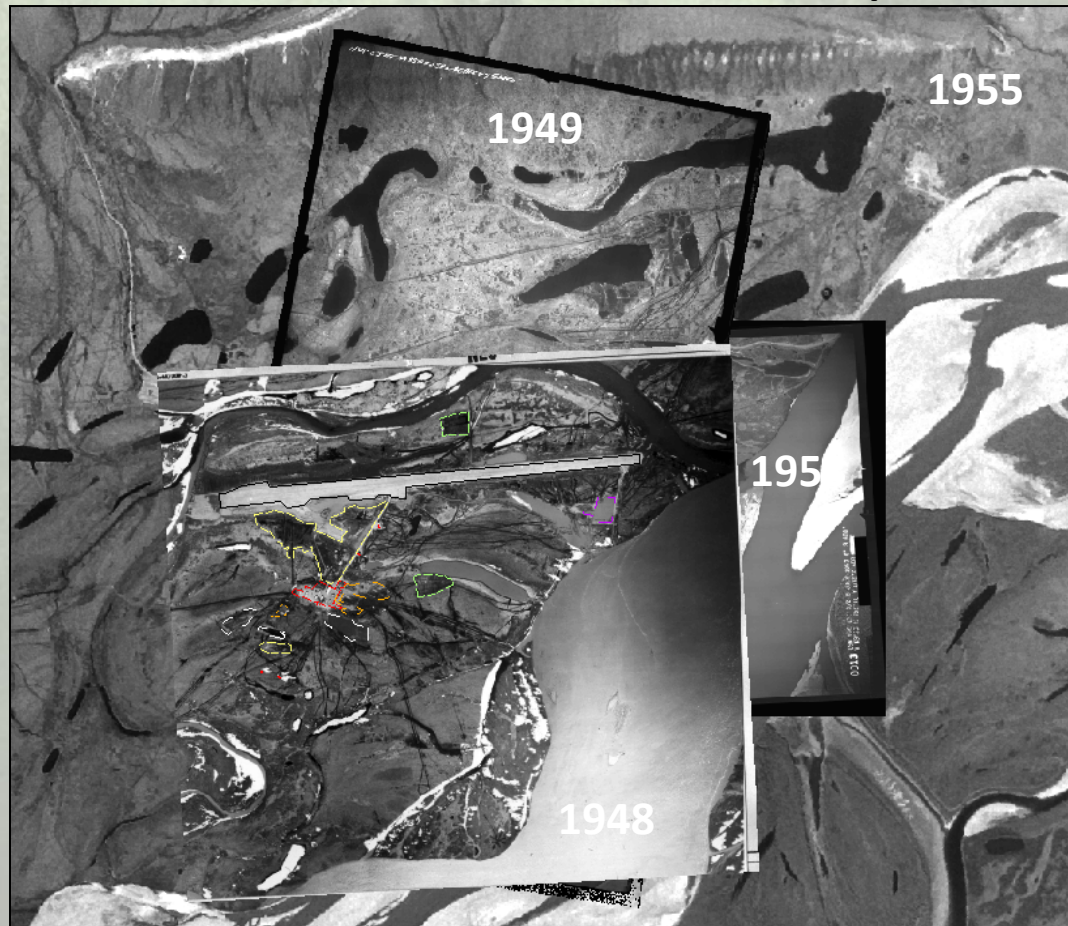




ANALYSIS



Traditional PHOTO INTERPRETATION Techniques :



Tone

Texture

Shadow

Shape

Size

Pattern

Color*

Height/Depth*

BUILDING STRONG®





EXAMPLES



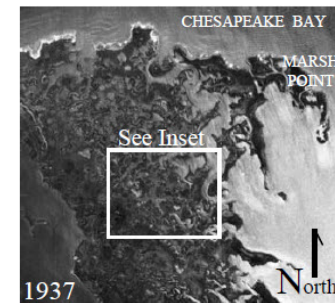
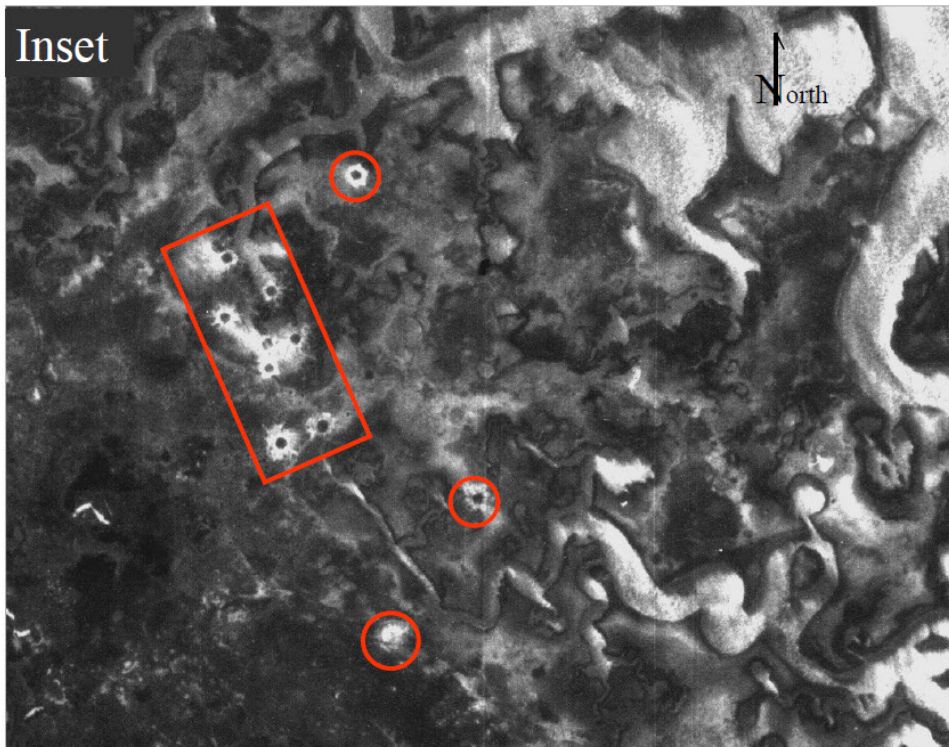
Plum Tree Island Bombing Range, VA

IMPACT CRATERS LOCATED INLAND – NORTHERN SECTION, 1937

Page 38



STONE



LOCATION DIAGRAM

Source: National Archives and Records Administration (NARA), Record Group 145, flown 12 April 1937.

— Impact Crater(s)

BUILDING STRONG®





EXAMPLES

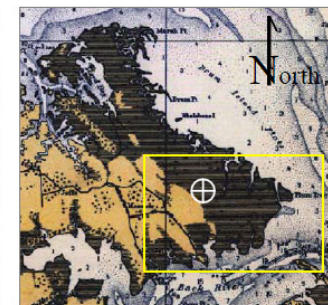
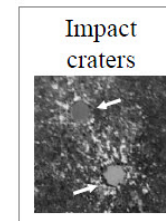
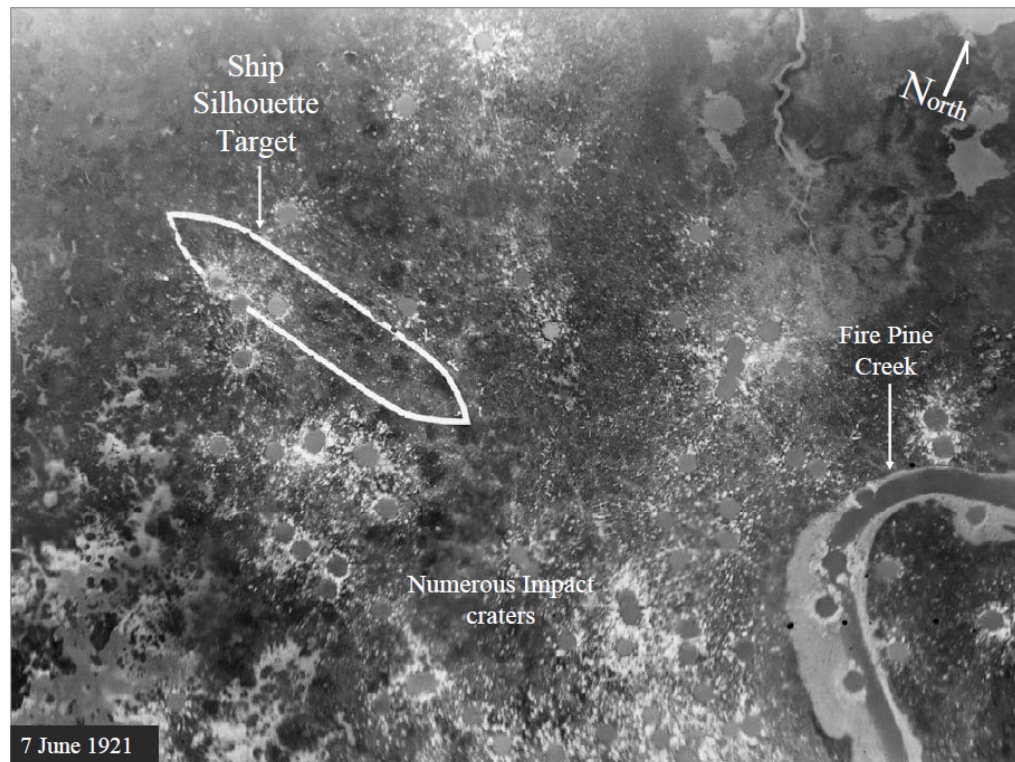


Plum Tree Island Bombing Range, VA SHIP SILHOUETTE TARGET – SOUTHERN SECTION, 1921

Page 14



PATTERN



LOCATION DIAGRAM

Source: Colorado State Archives, Army Air Service Photo School, Major Milling's Photographic Collection, Photo C-21188.

BUILDING STRONG®





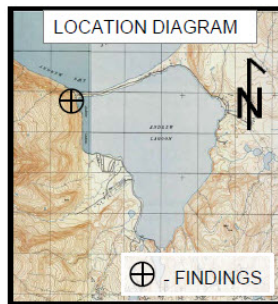
EXAMPLES



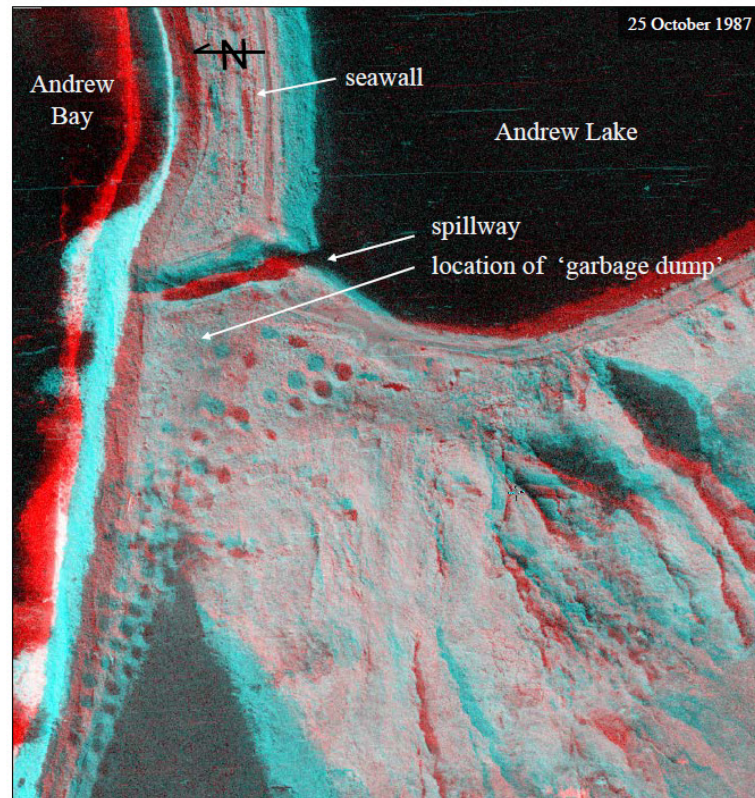
3-D AERIAL IMAGE : WEST SEAWALL & SHORELINE AREA



3-D IMAGE NO. 1



To obtain the 3-D effect, images must be viewed with red/blue lens stereo glasses.



Western section of Andrew Lake Seawall and shoreline along Andrew Bay. Numerous craters are evident in this area (left side of image).

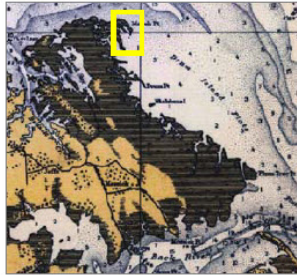
DEPTH





EXAMPLES

LOCATION DIAGRAM



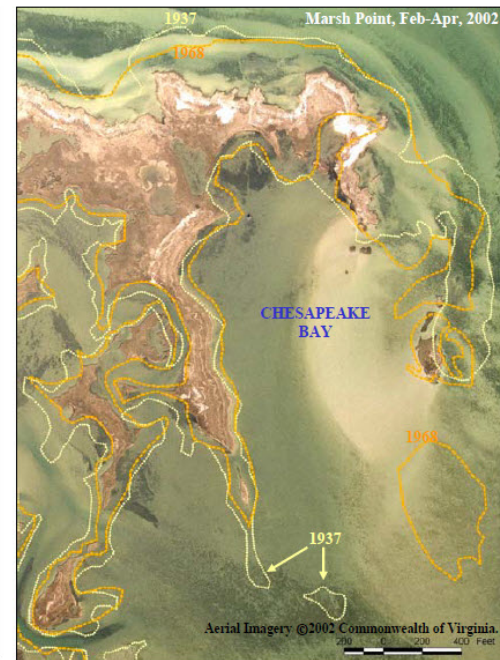
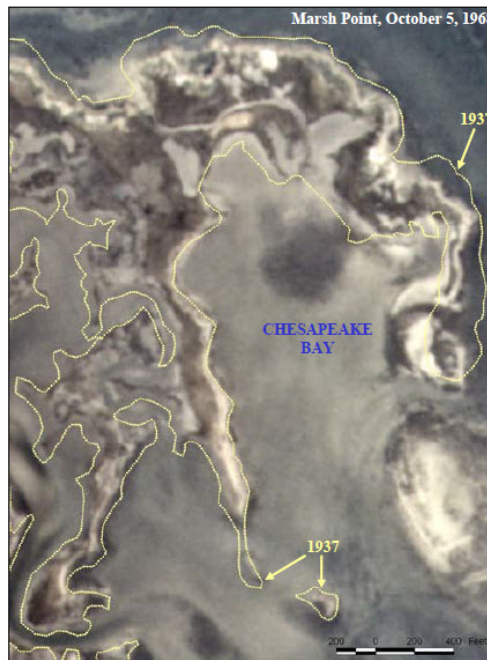
SHORELINE CHANGES – MARSH POINT

1937, 1968, & 2002 HISTORICAL COMPARISON OF VIEWS

Marsh Point – Note how the area has undergone significant erosion over time.
[Influences of sea level rise, storms, low/high tide were not factored into the photographic shoreline delineation.]

Shorelines : 1937 1968

SEE NEXT PAGE FOR LARGE SCALE VIEW



SEE PLATE 3

SEE PLATE 5

Page 64

SHORELINE CHANGES

BUILDING STRONG®





EXAMPLES



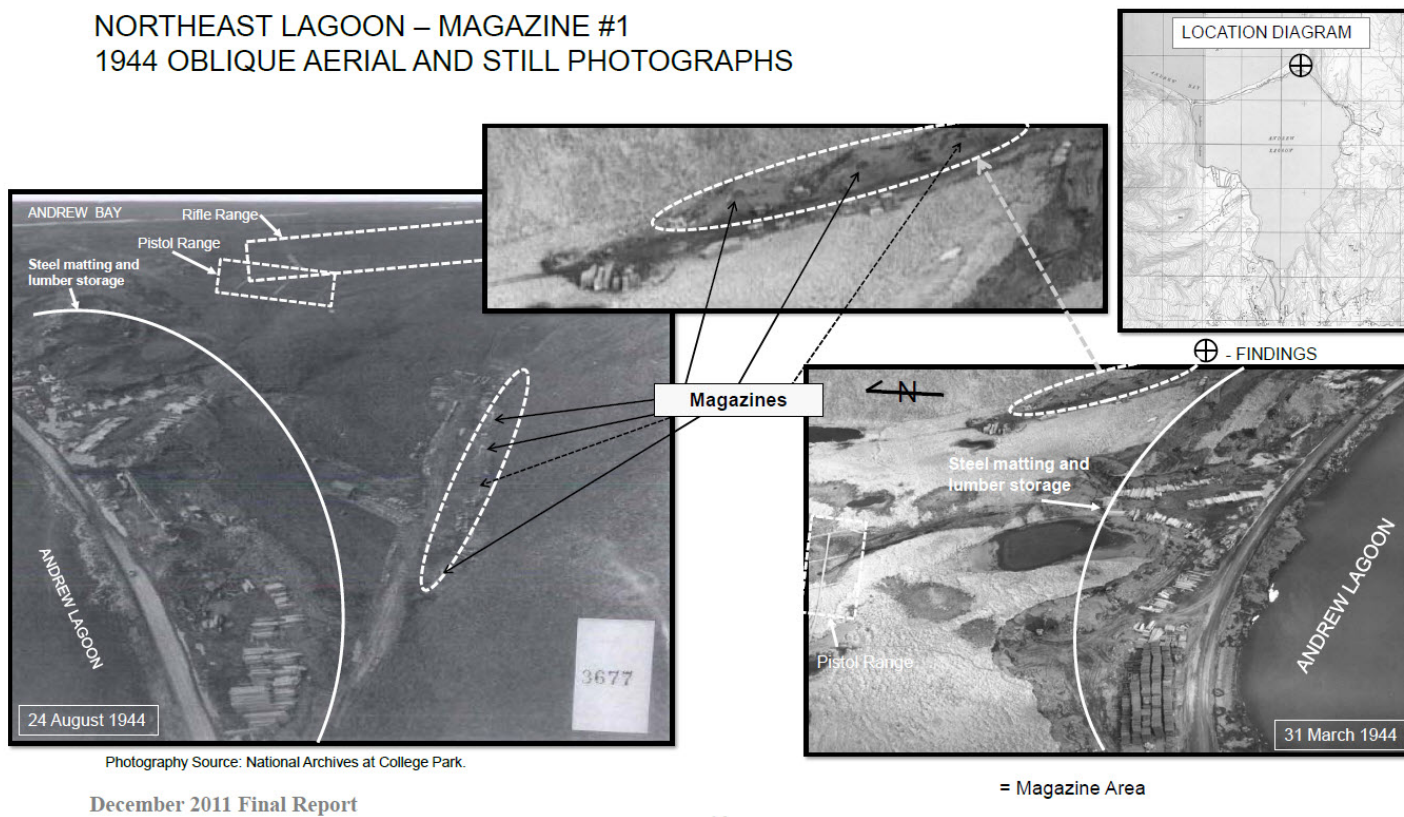
GROUND PHOTOS



PHOTOGRAPHIC ANALYSIS – NORTHEAST LAGOON



NORTHEAST LAGOON – MAGAZINE #1
1944 OBLIQUE AERIAL AND STILL PHOTOGRAPHS



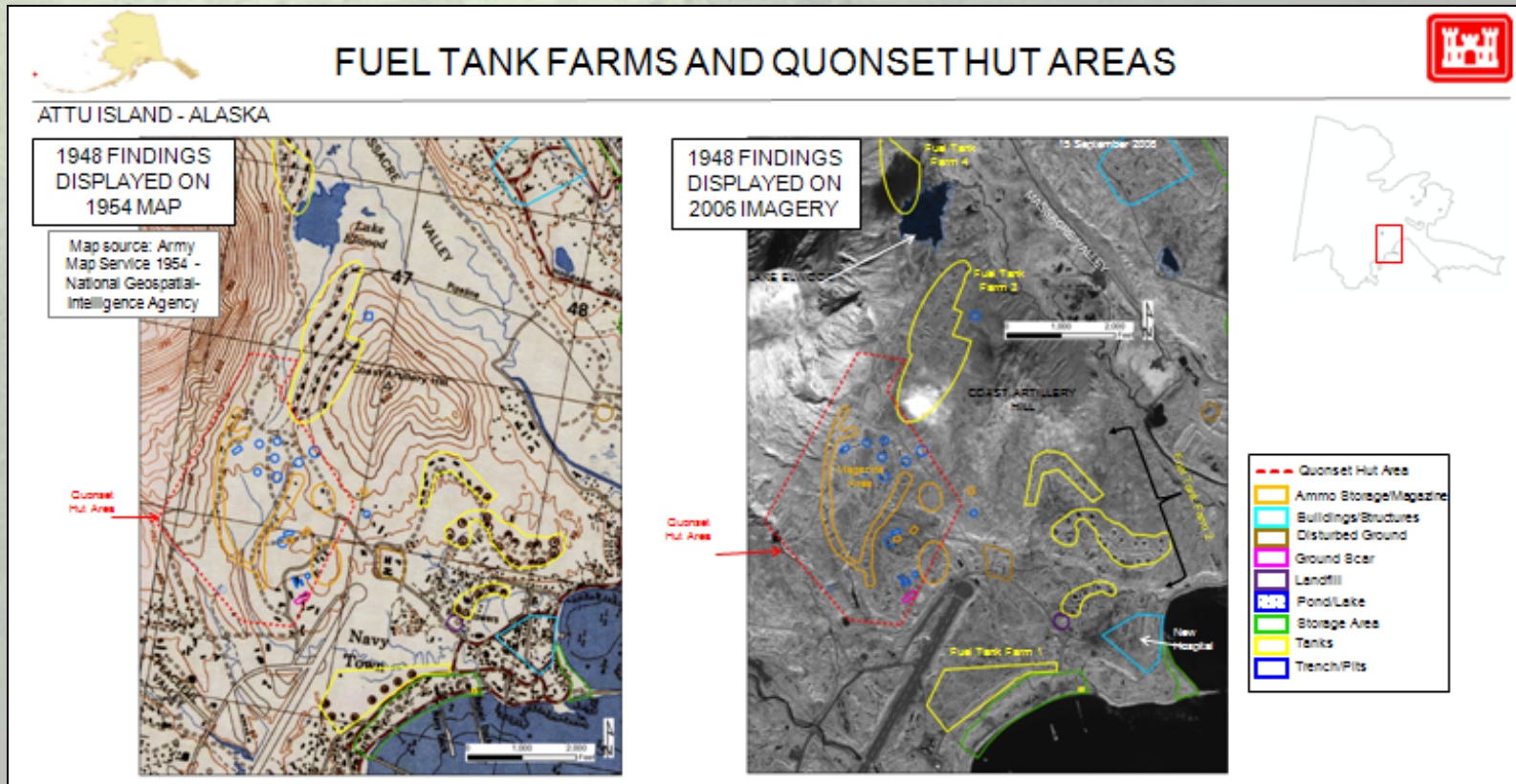
Photography Source: National Archives at College Park.

December 2011 Final Report

BUILDING STRONG®



GIS DATA PRODUCTION



BUILDING STRONG®





EXAMPLES OF CUSTOMIZED COSTS



**THE NUMBER ONE FACTOR IN DETERMINING COST OF EACH TASK IS
THE GEOGRAPHIC EXTENT OF THE SITE.**

- 1. IMAGERY RESEARCH AND ACQUISITION - \$5K TO \$25K**
 - 2. SITE SPECIFIC RESEARCH (MAPS, GROUND PHOTOS, TEXTURAL RECORDS) - \$5K TO \$50K**
 - 3. GEORECTIFICATION OF IMAGERY - \$10K TO \$25K**
 - 4. FULL ANALYSIS WITH GIS PACKAGE AND REPORT - \$25K TO \$50K**
- *AGC ASSISTS THE CUSTOMER IN DETERMINING WHAT TASKS PROVIDE THE GREATEST BENEFIT BASED ON A SPECIFIC BUDGET.**
- *TASKS ARE PAID VIA REIMBURSABLE FUNDING FROM CUSTOMER.**
- *AGC CAN SET UP CROSS LABOR CHARGE CODES AS WELL AS ACCEPT PROJECT ORDERS FOR MULTIPLE YEARS OF FY FUNDING.**





ARMY GEOSPATIAL CENTER

- Historical Photo Analysis



Visit AGC Website:

AGC Portal: <http://www.agc.army.mil/index.html>

Dr. Joseph Fontanella
Director



Mr. Richard Herrmann
Deputy Director

Mr. Michael Harper
Directorate Chief
Collection, Exploitation & Production Dir.

Mr. Tom Spillman
Chief
Hydrologic & Environmental Analysis Branch
703-428-7869

Ms. Joy Pochatila
Lead
Environmental Analysis Team
703-428-6261



**7701 Telegraph Road
Alexandria, Virginia
22315-3865**

PKI (CAC-Enabled): <https://cac.agc.army.mil>

SIPRNET: <http://www.agc.army.smil.mil>

JWICS: <http://www.agc.ic.gov>

