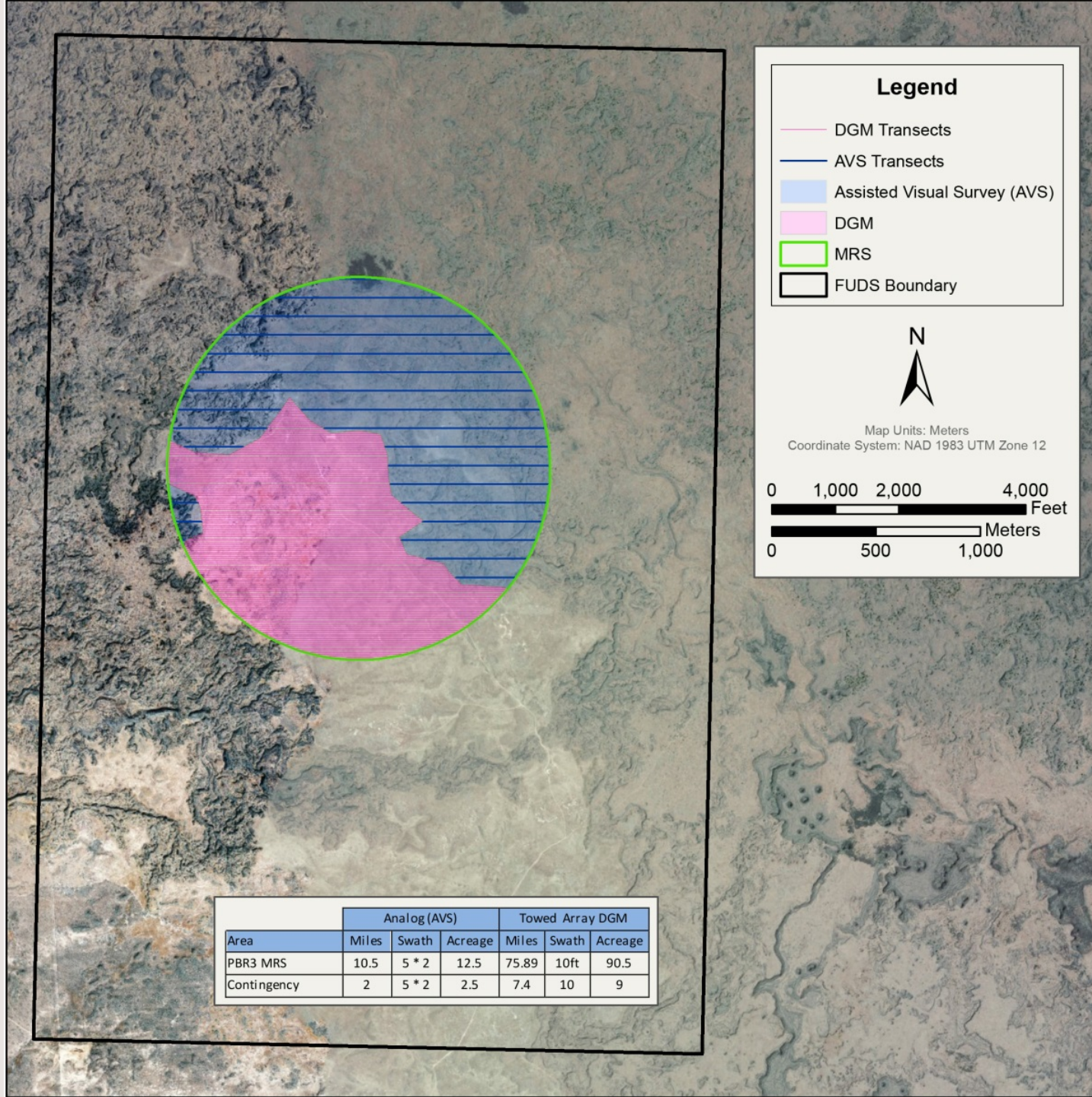


Pocatello Bombing Range No. 3

BLM Upper Snake Field Office



Area	Analog (AVS)			Towed Array DGM		
	Miles	Swath	Acreage	Miles	Swath	Acreage
PBR3 MRS	10.5	5 * 2	12.5	75.89	10ft	90.5
Contingency	2	5 * 2	2.5	7.4	10	9

Initial Hurdles

Differences in culture and processes

BLM

- State Office, District Office, Field Office - Who to communicate with?
- Interdisciplinary Team Involvement
 - Recreation, realty, cultural, range management, wildlife, and hazardous materials programs
- Multiple Use Focus
 - Public safety
 - Wilderness Study Area
 - Recreation activities

USACOE

- Division, District - Watershed and political boundaries
- Command and Control Structure
 - Contracting Project Manager
 - Technical Project Manger
- Project Implementation Focus
 - Plan, implement, and stay on budget



Bridging the Gap

- Outlining the roles
 - Identifying individual roles and responsibilities for members of project team (BLM and USACOE)
 - Single BLM contact to coordinate with BLM staff
- Access Agreement
 - Clearly outlined the requirements and limitations
 - Provided early in the process for contractor planning
- Field Visit
 - Allowed team to interact in person
 - Provided USACOE with site specific information
 - Remoteness, access limitations, staging possibilities



After Action Review

The Good

- Identifying core team members' roles and responsibilities for both parties
- Early involvement from the local Field Office
- Field Office and site visit by the USACOE

Need some more work

- Understanding how other agencies function
- Continuous communication
- Clearly getting everything in writing

