



**U.S. AIR FORCE**



# ***Cape Cod Air Force Station Wind Turbines***

**Steve Mellin  
6 SWS/MA  
8 August 2013**

**THIS BRIEFING IS UNCLASSIFIED**



THIS BRIEFING IS UNCLASSIFIED



# ***CCAFS Wind Turbines***

THIS SLIDE IS UNCLASSIFIED

- Background
- Proposed Locations
- Current Status
- Summary
- Questions

---

*Integrity - Service - Excellence*

THIS BRIEFING IS UNCLASSIFIED



# ***Background***

THIS SLIDE IS UNCLASSIFIED

- Cape Cod AFS used about 13,000,000 KWH of electricity annually
  - When designed, ~ \$5K a day for electricity
- Executive Orders 13423 and 13514, established goals and requirements on federal energy consumption including generating renewable energy on federal property and reducing greenhouse gas emissions



# Background

THIS SLIDE IS UNCLASSIFIED

- Air Force Space Command, working with the Air Force Civil Engineering Support Agency and the Air Force Center for Engineering and the Environment (now Air Force Civil Engineer Center – AFCEC) identified Cape Cod AFS as a possible location to take advantage of wind power
  - Most of the initial investigation and analysis was already completed for the AFCEC Wind Turbines
  - Able to meet NEPA requirements with a CATEx
  - Analysis showed that installing two turbines could offset CCAFS energy consumption by 50%



# ***Location***

THIS SLIDE IS UNCLASSIFIED

- The initial goal was to install two wind turbines within Cape Cod AFS's existing property
- After reviewing siting constraints for the turbines, only one turbine could be installed on CCAFS proper, the second turbine would have to be installed on adjacent land
- Worked with Camp Edwards Staff to locate a turbine close to CCAFS that would not interfere with training plans and minimize disruption to the reservation



THIS BRIEFING IS UNCLASSIFIED



# Siting Constraints

THIS SLIDE IS UNCLASSIFIED



*Integrity - Service - Excellence*

THIS BRIEFING IS UNCLASSIFIED



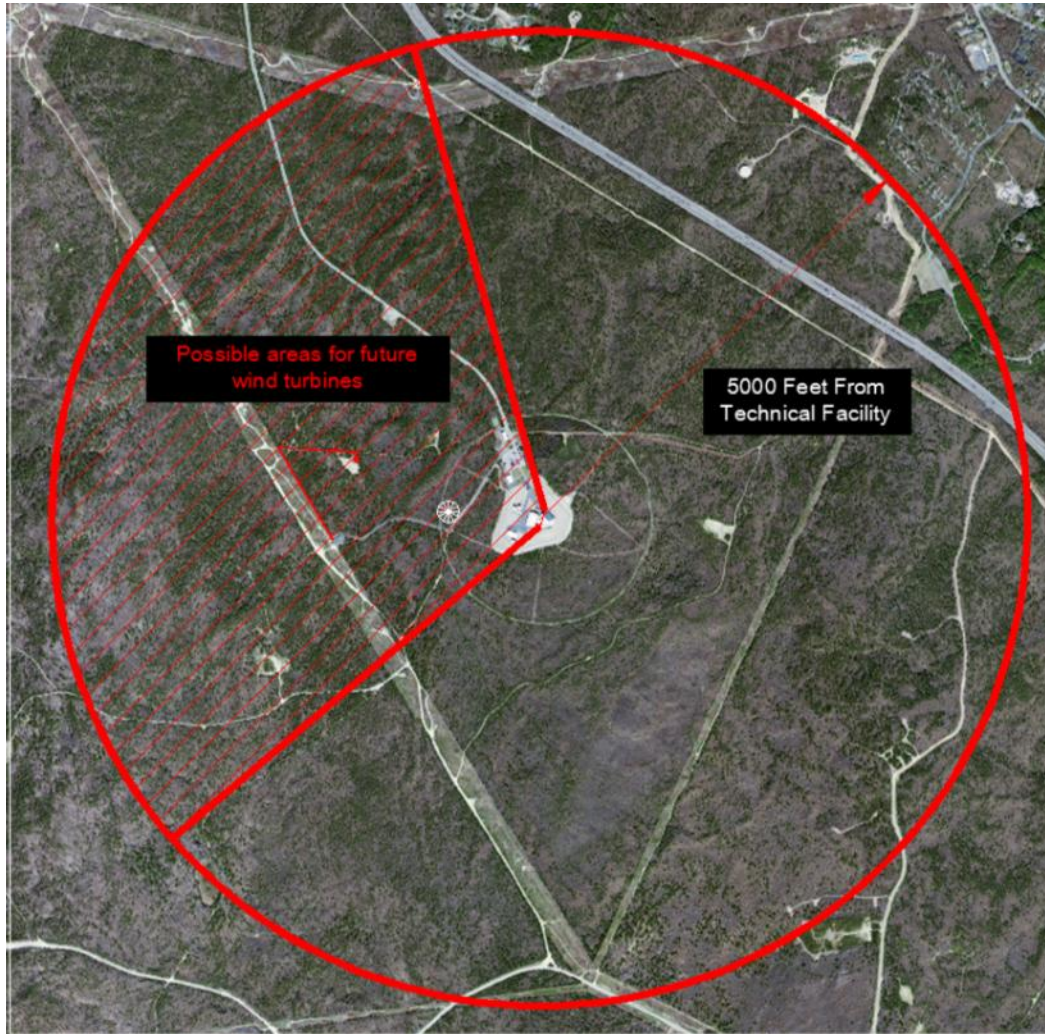


THIS BRIEFING IS UNCLASSIFIED



# Siting Constraints

THIS SLIDE IS UNCLASSIFIED



*Integrity - Service - Excellence*

THIS BRIEFING IS UNCLASSIFIED



THIS BRIEFING IS UNCLASSIFIED



# Siting Constraints

THIS SLIDE IS UNCLASSIFIED



*Integrity - Service - Excellence*

THIS BRIEFING IS UNCLASSIFIED





THIS BRIEFING IS UNCLASSIFIED



# Siting Constraints

THIS SLIDE IS UNCLASSIFIED



*Integrity - Service - Excellence*

THIS BRIEFING IS UNCLASSIFIED



THIS BRIEFING IS UNCLASSIFIED



# Siting Constraints

THIS SLIDE IS UNCLASSIFIED



*Integrity - Service - Excellence*

THIS BRIEFING IS UNCLASSIFIED



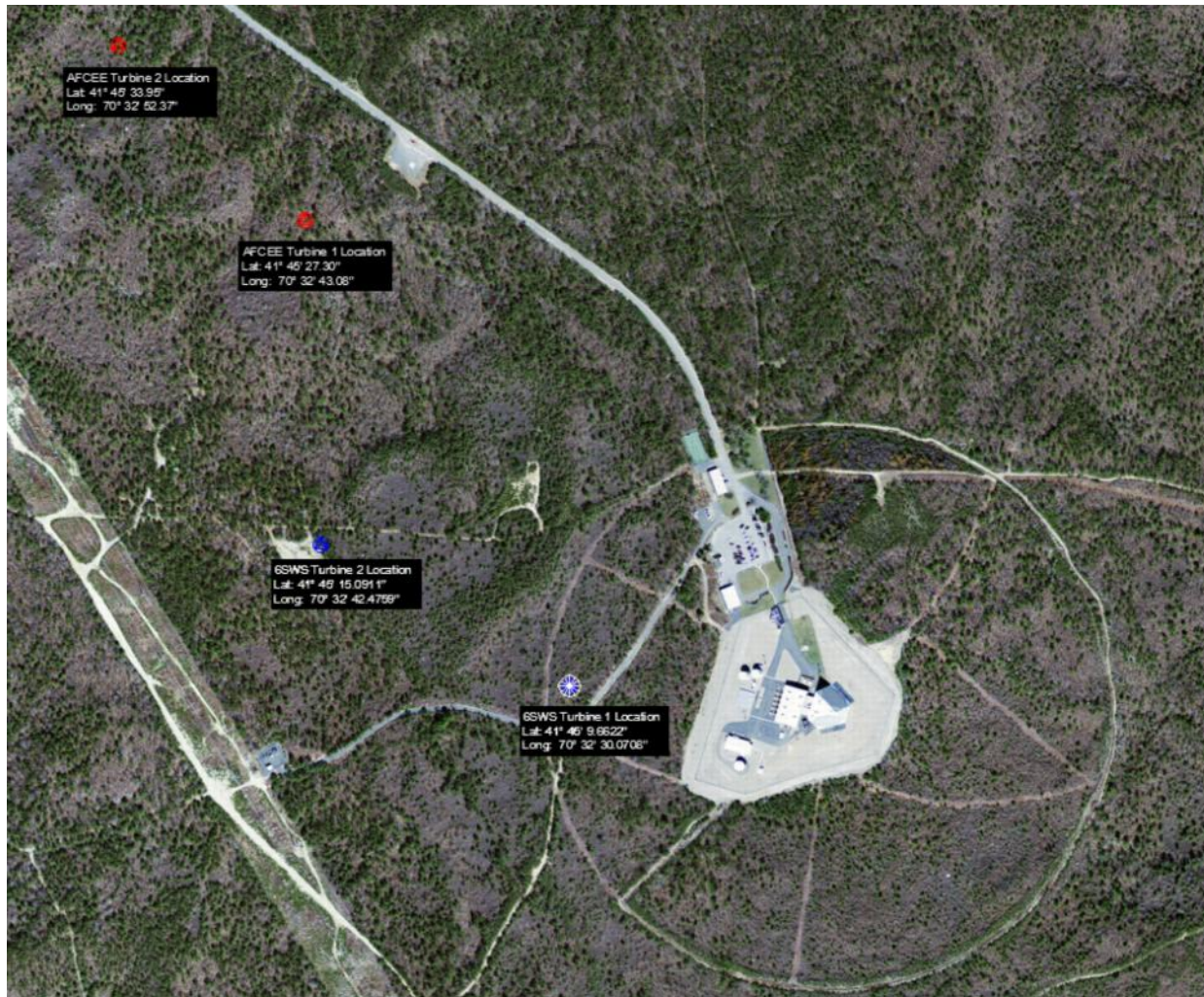


THIS BRIEFING IS UNCLASSIFIED



# Locations

THIS SLIDE IS UNCLASSIFIED



*Integrity - Service - Excellence*

THIS BRIEFING IS UNCLASSIFIED





THIS BRIEFING IS UNCLASSIFIED



# ***AFSPC Proposed Locations***

THIS SLIDE IS UNCLASSIFIED



*Integrity - Service - Excellence*

THIS BRIEFING IS UNCLASSIFIED



THIS BRIEFING IS UNCLASSIFIED



# ***AFSPC Site 1 Photos***

THIS SLIDE IS UNCLASSIFIED



---

*Integrity - Service - Excellence*

THIS BRIEFING IS UNCLASSIFIED





THIS BRIEFING IS UNCLASSIFIED



# ***AFSPC Site 2 Photos***

THIS SITE IS UNCLASSIFIED



*Integrity - Service - Excellence*

THIS BRIEFING IS UNCLASSIFIED





THIS BRIEFING IS UNCLASSIFIED



# Current Status

THIS SLIDE IS UNCLASSIFIED

- Project under construction and on schedule for a December 2013 completion



*Integrity - Service - Excellence*

THIS BRIEFING IS UNCLASSIFIED



# Summary

THIS SLIDE IS UNCLASSIFIED

- AF Space Command believes two wind turbines at CCAFS would enable the command to meet the goals of EOs 13423 and 13514
- Installing two turbines would make sense both economically and environmentally
- The turbines would fit into land use plans for this section of Camp Edwards/The Reservation





THIS BRIEFING IS UNCLASSIFIED



# Questions

THIS SLIDE IS UNCLASSIFIED



---

*Integrity - Service - Excellence*

THIS BRIEFING IS UNCLASSIFIED