



Hercules 009 Landfill Superfund Site

Scott Martin

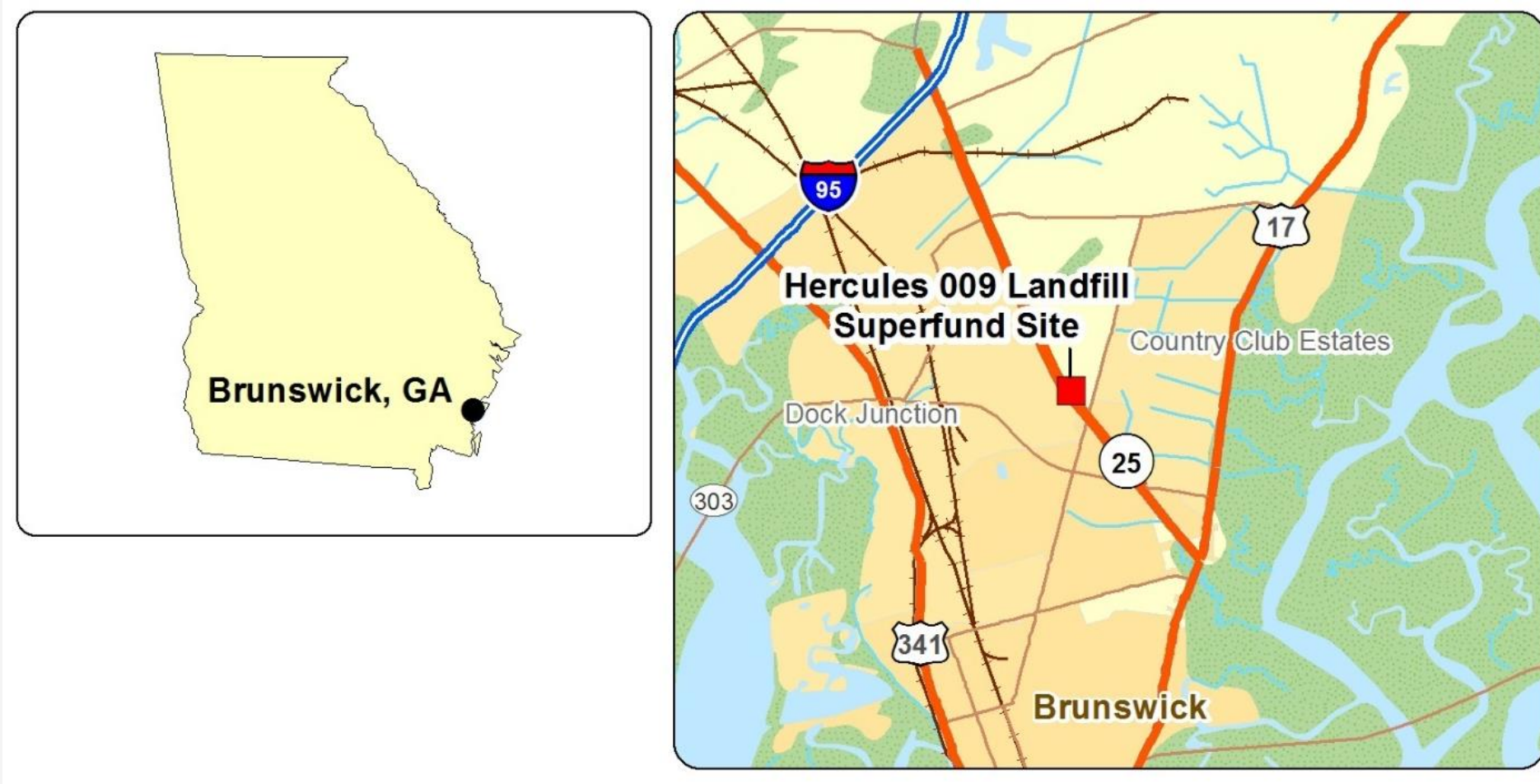


Presentation Overview

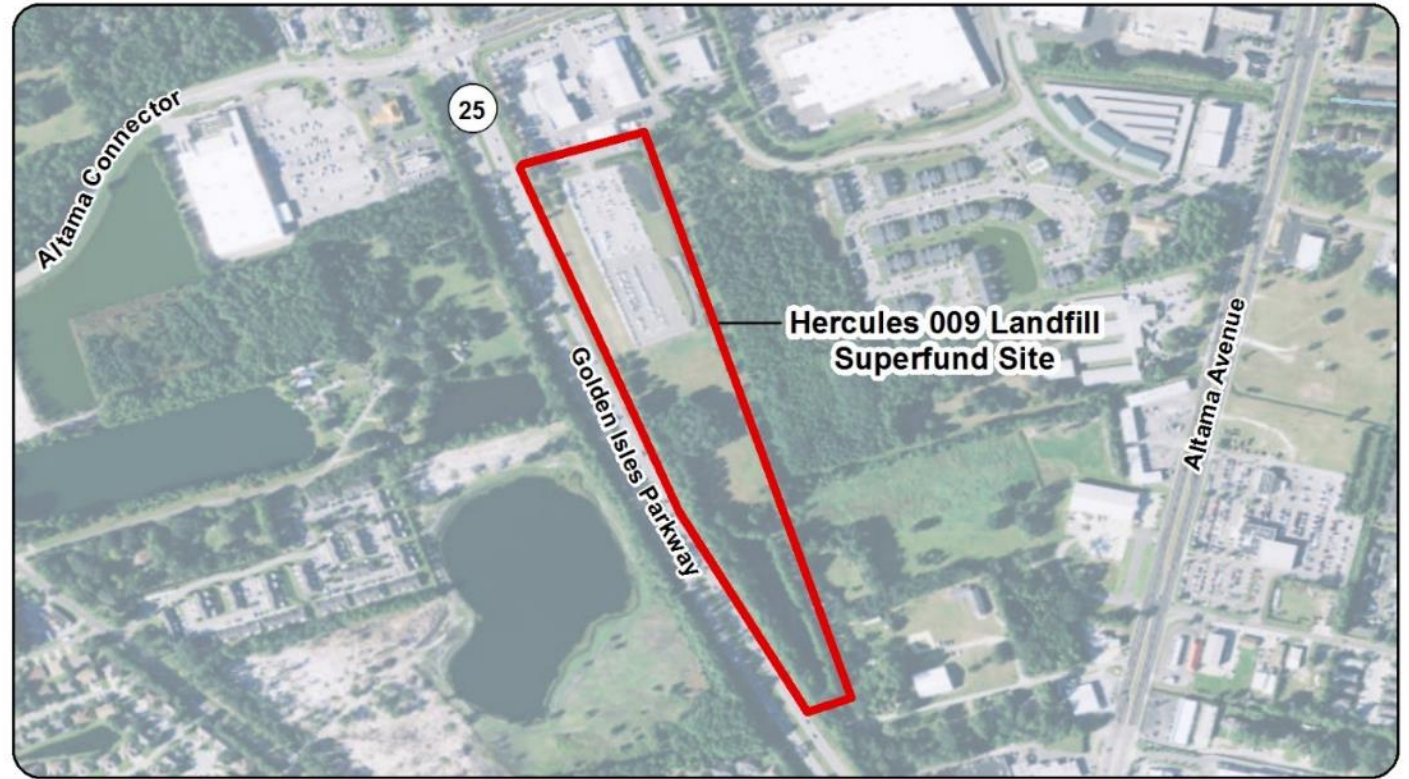
- Site History
- Site Cleanup
- Reuse Planning
- Reuse Outcomes
- Lessons Learned



Site History




Site History



0 250 500 1,000
Feet

Sources: DeLorme, AND, Tele Atlas, First American, UNEP-WCMC, Esri, DigitalGlobe, GeoEye, Earthstar Geographics, CNES/Airbus DS, USDA, USGS, AEX, Getmapping, Aerogrid, IGN, IGP, swisstopo, GIS User Community and the 2011 FYR.

Legend

 Approximate Site Boundary



Hercules 009 Landfill Superfund Site
City of Brunswick, Glynn County, Georgia






Site Cleanup



0 250 500 1,000
Feet

Sources: Esri, DigitalGlobe, GeoEye, Earthstar Geographics, CNES/Airbus DS, USDA, USGS, AEX, Getmapping, Aerogrid, IGN, IGP, swisstopo, the GIS User Community, Figures from AnteaGroup and the 2011 FYR.

Legend

-  Approximate Site Boundary
-  Southern Site Pond
-  Landfill Cells



Hercules 009 Landfill Superfund Site
City of Brunswick, Glynn County, Georgia

Site Cleanup



Site Reuse Planning

- Modifying the cap for reuse



Reuse Outcomes

- Southern Site Pond
- Partnerships



Reuse Outcomes



Reuse Outcomes



Reuse Outcomes



Reuse Outcomes



Lessons Learned

- Work with stakeholders to consider reuse early in the cleanup process
- Reuse can enhance the remedy
- Never too late for reuse



Contact Information

Scott Martin

martin.scott@epa.gov

(404) 562-8916