



Welcome to the CLU-IN Internet Seminar

Superfund Research Program Strategic Planning - Your Input for Future Directions
Sponsored by:

National Institutes of Health, National Institute of Environmental Health Sciences,
Superfund Research Program

Delivered: January 25, 2010, 2:00 PM - 4:00 PM, EST (19:00-21:00 GMT)

Instructors:

William A. Suk, Ph.D., Director, Superfund Research Program (suk@niehs.nih.gov)

Claudia L. Thompson, Ph.D., Program Administrator, Superfund Research Program (thomps14@niehs.nih.gov)

Beth E. Anderson, Program Analyst, Superfund Research Program (tainer@niehs.nih.gov)

Heather F. Henry, Ph.D., Program Administrator, Superfund Research Program (henryh@niehs.nih.gov)

Moderator:

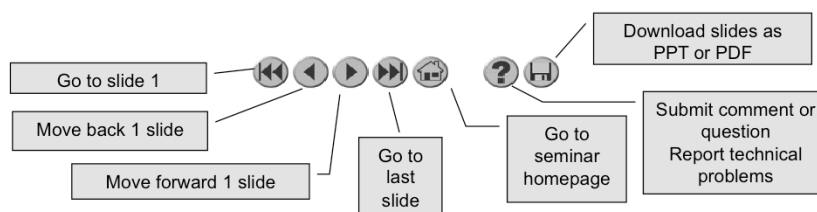
Larry Reed, MDB, Inc. (lreed@michaeldbaker.com)

Visit the Clean Up Information Network online at www.cluin.org

1

Housekeeping

- Please mute your phone lines, Do NOT put this call on hold
- Q&A
- Turn off any pop-up blockers
- Move through slides using # links on left or buttons



- This event is being recorded
- Archives accessed for free <http://clu.in.org/live/archive/>

2

Although I'm sure that some of you have these rules memorized from previous CLU-IN events, let's run through them quickly for our new participants.

Please mute your phone lines during the seminar to minimize disruption and background noise. If you do not have a mute button, press *6 to mute #6 to unmute your lines at anytime. Also, please do NOT put this call on hold as this may bring delightful, but unwanted background music over the lines and interrupt the seminar.

You should note that throughout the seminar, we will ask for your feedback. You do not need to wait for Q&A breaks to ask questions or provide comments. To submit comments/questions and report technical problems, please use the ? Icon at the top of your screen. You can move forward/backward in the slides by using the single arrow buttons (left moves back 1 slide, right moves advances 1 slide). The double arrowed buttons will take you to 1st and last slides respectively. You may also advance to any slide using the numbered links that appear on the left side of your screen. The button with a house icon will take you back to main seminar page which displays our agenda, speaker information, links to the slides and additional resources. Lastly, the button with a computer disc can be used to download and save today's presentation materials.

With that, please move to slide 3.

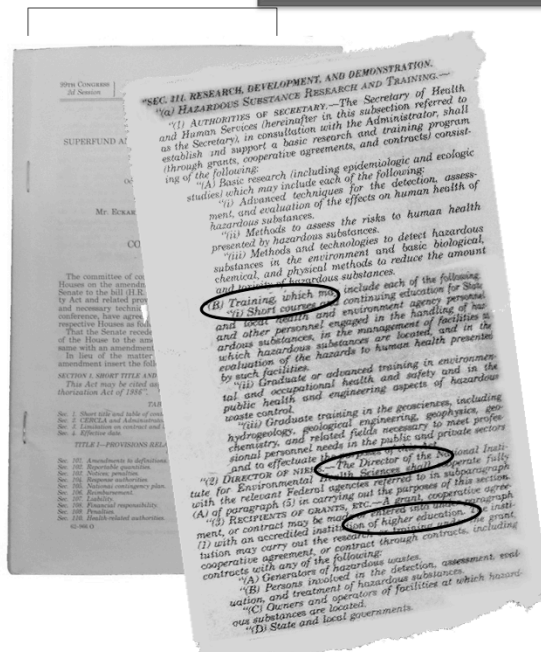
Outline of Session

- Welcome
- Agenda
 - Program Mandates
 - Historical Perspective
 - Strategic Planning Process
 - Responses to Questions



3

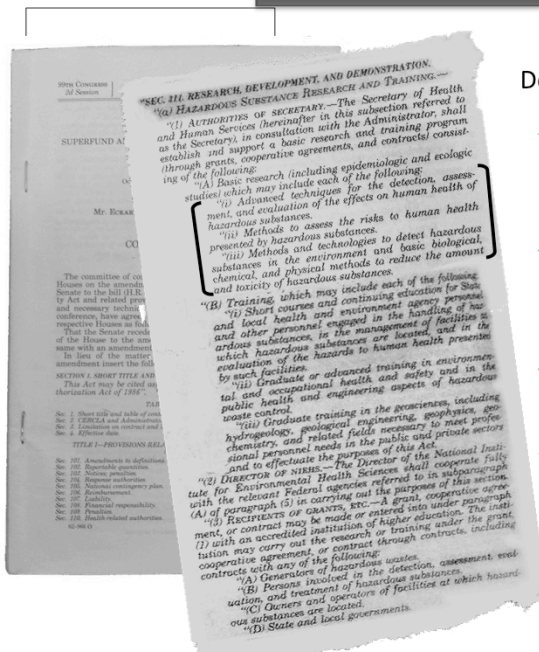
SRP Authorities under SARA



- A university-based grant program established in 1986 under Superfund Amendments Reauthorization Act (SARA)
- Administered by NIEHS
- Supports interdisciplinary research between disciplines such as molecular biology, engineering, epidemiology, bioavailability, hydrogeology, fate & transport
- Facilitates training, community outreach, partnering, and technology transfer



SRP Authorities under SARA



Development of:

- ◆ Advanced techniques for the detection, assessment, and evaluation of the human health effects of hazardous substances
- ◆ Methods to assess the risks to human health presented by hazardous substances
- ◆ Methods and technologies to detect hazardous substances in the environment
- ◆ Basic biological, chemical, and physical methods to reduce the amount and toxicity of hazardous substances



Overarching Program Goals

- Elucidate relationship between exposure and disease
- Develop efficient and cost-effective cleanup strategies and detection technologies
- Conduct science that contributes to human health risk assessment and decision-making for remediation
- Reduce the risk of exposure
- Improve public health



6

Mechanisms of Funding

Multi-project Grants (P42)

- Multi-project structure allows for integration across disciplines
- Incorporates basic and application oriented research

Individual Researcher (R01)

- Designed to address specific issues to complement the multi-project research programs
- Tackle issues of emerging concern for Superfund

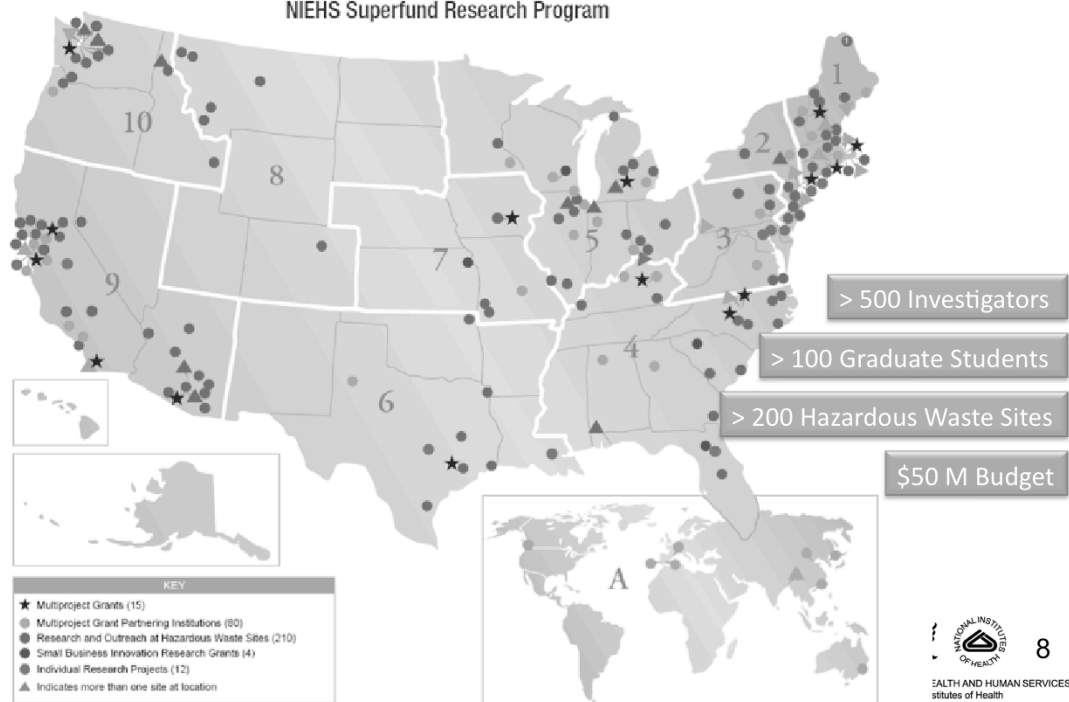
SBIR/STTR (R43/R44)

- Designed to foster the commercialization of technologies
- Products and devices relevant to clean-up and monitoring

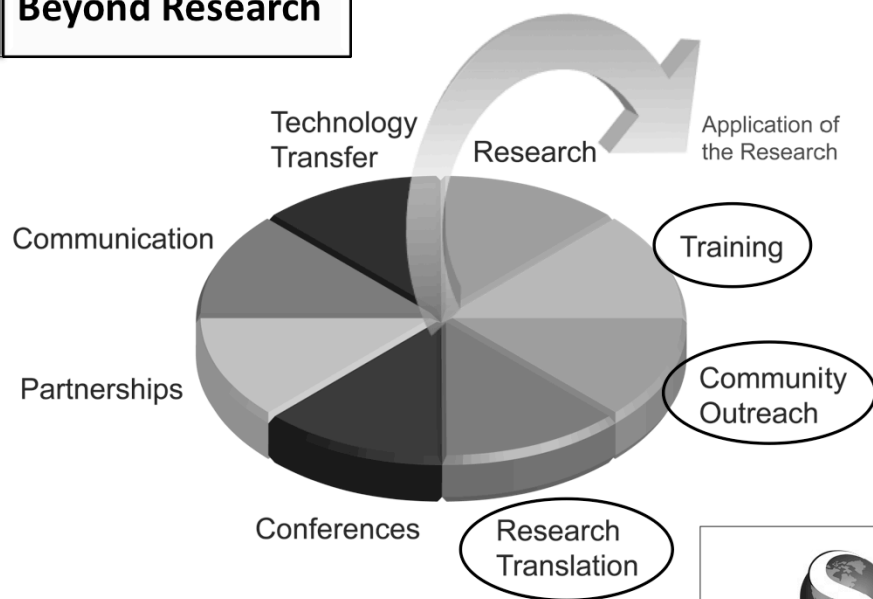




NIEHS Superfund Research Program



Beyond Research



Why Strategic Planning?

- Provide the program with a framework to guide the SRP over the next five years:
 - Prioritize the scope of the science
 - Establish an approach for attaining scientific balance and growth, enhancing translation, community outreach, and training along with
 - Develop guidelines for managing the program/decision-making.

Ultimately, the strategic plan will enable us to better promote the use of the SRP's resources to protect human health.



10

Strategic Planning – Reaching Out to Stakeholders

- Lay public
- Environmental Health Researchers
- Sister Superfund Agencies (EPA & ATSDR)
- Other Government Officials – federal, state and local
- Tribes
- Non-governmental Organizations
- Private Sector
- Policy Makers
- Who Else?



11

Strategic Planning – Process

- Web-based seminars
- Series of public meetings
- Request for Information in Federal Register and in NIH Guide
- Online Questionnaire



12

Strategic Planning - Online Questionnaire

SRP 2010 Strategic Planning Questionnaire Survey - Windows Internet Explorer

http://www.surveymonkey.com

Accepting Input through January 29th!!!

File Edit View Favorites Tools Help

SRP 2010 Strategic Planning Questionnaire Survey

SRP 2010 Strategic Planning Questionnaire [Exit this survey](#)

Scope of Science

20%

The Superfund Research Program (SRP) is an interdisciplinary grant program established under Superfund Amendments Reauthorization Act (SARA) that is mandated to support university-based, basic research to develop methods and technologies to detect, assess, and reduce the amount and toxicity of hazardous substances and to evaluate the risks and effects of hazardous substances on human health.

Scope of Science. Part of the SRP strategic planning process is to identify ways to prioritize programmatic direction and to achieve balance given the many competing demands for research on hazardous substances.

3. Given the breadth of Program mandates, what prioritization criteria should SRP use to guide inclusion of themes and issues to achieve Program balance?

In your response, you may wish to consider criteria such as: potential for exposure; contaminant recalcitrance; elucidating new toxicity modalities; balance between: hazardous waste & hazardous substances, basic & applied research; emerging & established contaminants, human health & ecological

13

IN SERVICES

Strategic Planning – the Questions

- Today's discussion
 - Framed around the 8 questions in the questionnaire
 - Input from webinar will be summarized
- Please fill out the on-line questionnaire:
<http://www.surveymonkey.com/s/39Q7W5P>
- Compile input, identify themes, develop strategic plan
- Post draft for comments: SRP web site and in Federal Register: <http://www.niehs.nih.gov/srp/strategicplan>



Questions

Scope of Science

- Given the breadth of Program mandates, what prioritization criteria should SRP use to guide inclusion of themes and issues to achieve Program balance?

Interdisciplinary Research

- What approaches (research or otherwise) will most effectively foster interdisciplinary interactions?

Training

- What approaches or activities should SRP consider to enhance impact of graduate training?



Questions, cont.

Identifying Stakeholders

- Who are SRP's stakeholders and what approaches or mechanisms can SRP use to most effectively interact with them?

Research Translation

- What are the best ways for SRP to achieve its goal of accelerating research translation?

Community Engagement

- What approaches to community engagement are most appropriate for SRP?
- What disciplines are needed to make the greatest impact in community engagement?

Grant Mechanisms

- What research team structure(s) and/or disciplines are needed to make the greatest advances in SRP Program mandates?



Scope of Science

- Given the breadth of Program mandates, what prioritization criteria should SRP use to guide inclusion of themes and issues to achieve Program balance?

In your response, you may wish to consider: potential for exposure; contaminant recalcitrance; elucidating new toxicity modalities; balance between: hazardous waste & hazardous substances, basic & applied research; emerging & established contaminants, human health & ecological health. Provide specific examples as necessary.



U.S. DEPARTMENT OF HEALTH AND HUMAN SERVICES
National Institutes of Health

17

Interdisciplinary Research

What approaches (research or otherwise) will most effectively foster interdisciplinary interactions?

To address the complexity of environmental health issues, SRP endorses interdisciplinary research, or, interactions between researchers from a wide range of disciplines relevant to Program mandates.



18

Training

What approaches or activities should SRP consider to enhance the impact of graduate training?

To fulfill SARA mandates, SRP supports graduate training within funded grants. Given the interdisciplinary context of SRP, graduate trainees are exposed to multiple disciplines and, therefore, are well positioned to meet the complex challenges in environmental health as well as mitigation and management of hazardous substances.



U.S. DEPARTMENT OF HEALTH AND HUMAN SERVICES
National Institutes of Health

19

Identifying Stakeholders

Who are SRP's stakeholders and what approaches or mechanisms can SRP use to most effectively interact with them?

SRP defines "stakeholders" as individuals, groups, or organizations likely to benefit from the SRP. In order to maximize the impact of program science, it is important to know the SRP stakeholders and how to reach them.



20

Research Translation

What are the best ways for SRP to achieve its goal of accelerating research translation?

Research translation is a concerted effort to ensure research is accessible to end-users. SRP supports research translation activities with the goal of accelerating the useful application of SRP science advances.

In your response, you may wish to consider how the program can accelerate research translation through: effective methods of communication, data sharing, technology transfer, etc.



21

Community Engagement

What approaches to community engagement are most appropriate for SRP?

What disciplines are needed to make the greatest impact in community engagement?

In your response, you may wish to consider: which communities to target, what the community needs, what approach is most effective, how to engage communities, etc.



22

Grant Mechanisms

What research team structure(s) and/or disciplines are needed to make the greatest advances in SRP Program mandates?

As a university-based grant program, SRP has flexibility to offer a number of grant mechanisms. Grant mechanisms specify the structure of the research team (such as single-project, multi-project), the size of the teams, the disciplines represented, etc.



23



Thanks

Thanks for your input

Open thru January 29th!!

- SRP 2010 Strategic Planning Questionnaire
<http://www.surveymonkey.com/s/39Q7W5P>
- General Info on SRP Strategic Planning:
<http://www.niehs.nih.gov/srp/strategicplan>
- Questions? SRPINFO@niehs.nih.gov



24