



Superfund Redevelopment Resources and Contacts

Alexis Rourk Reyes, EPA Superfund
Redevelopment Program

Chelsea Sebetich, EPA Superfund
Redevelopment Program

Superfund Redevelopment Resources & Tools

- [Technical Assistance & Reuse Planning](#)
- [EPA Guidance, Handbooks & Fact Sheets](#)
- [Prospective Purchaser Inquiry\(PPI\) service calls](#)
- [Status/Comfort Letters](#)
- [Ready for Reuse \(RfR\) Determinations](#)
- [EPA Agreements \(e.g., PPAs\)](#)



EPA's Superfund Redevelopment Program works in partnership with EPA staff and communities to support the beneficial reuse of Superfund sites across the country. The Prospective Purchaser Inquiry (PPI) Service is an effective best practice that EPA regional site teams can use when they respond to inquiries from stakeholders interested in purchasing, reusing or facilitating the reuse of Superfund site properties. At the same time, the PPI Service can provide tribal, state and local governments, communities, developers and other stakeholders with valuable information on how EPA can support their reuse efforts.



EPA's Prospective Purchaser Inquiry (PPI) Service

EPA Regions use a variety of tools to support reuse at Superfund sites. EPA's PPI Service brings these tools together to provide accurate, comprehensive information about both removal and remedial Superfund sites. The information provided by EPA helps prospective purchasers make informed and timely decisions. The service is free of charge.

PPI Meeting Agenda and Discussion Topics

1. What is the current status of EPA's cleanup? What are the future anticipated actions?
2. Is the proposed reuse compatible with EPA's cleanup and the site's current or potential site restrictions?



prospective purchaser understand federal landowner liability protections?

settle or resolve any Section 107(l) liens or Section 107(r) Windfall liens?

tools and support may be helpful?



Taylor Road Landfill
Superfund site in
Seffner, Florida



Harris Corp. (Palm Bay
Plant) Superfund site in
Palm Bay, Florida



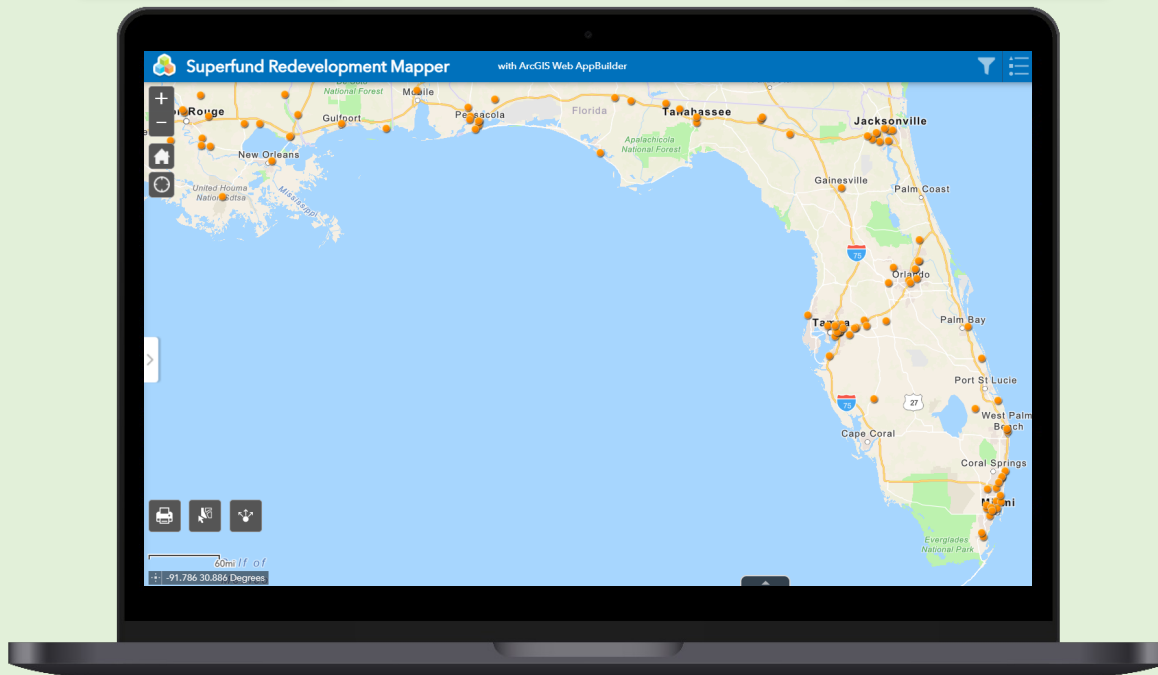
Bayou Bonfouca
Superfund site in
Slidell, Louisiana



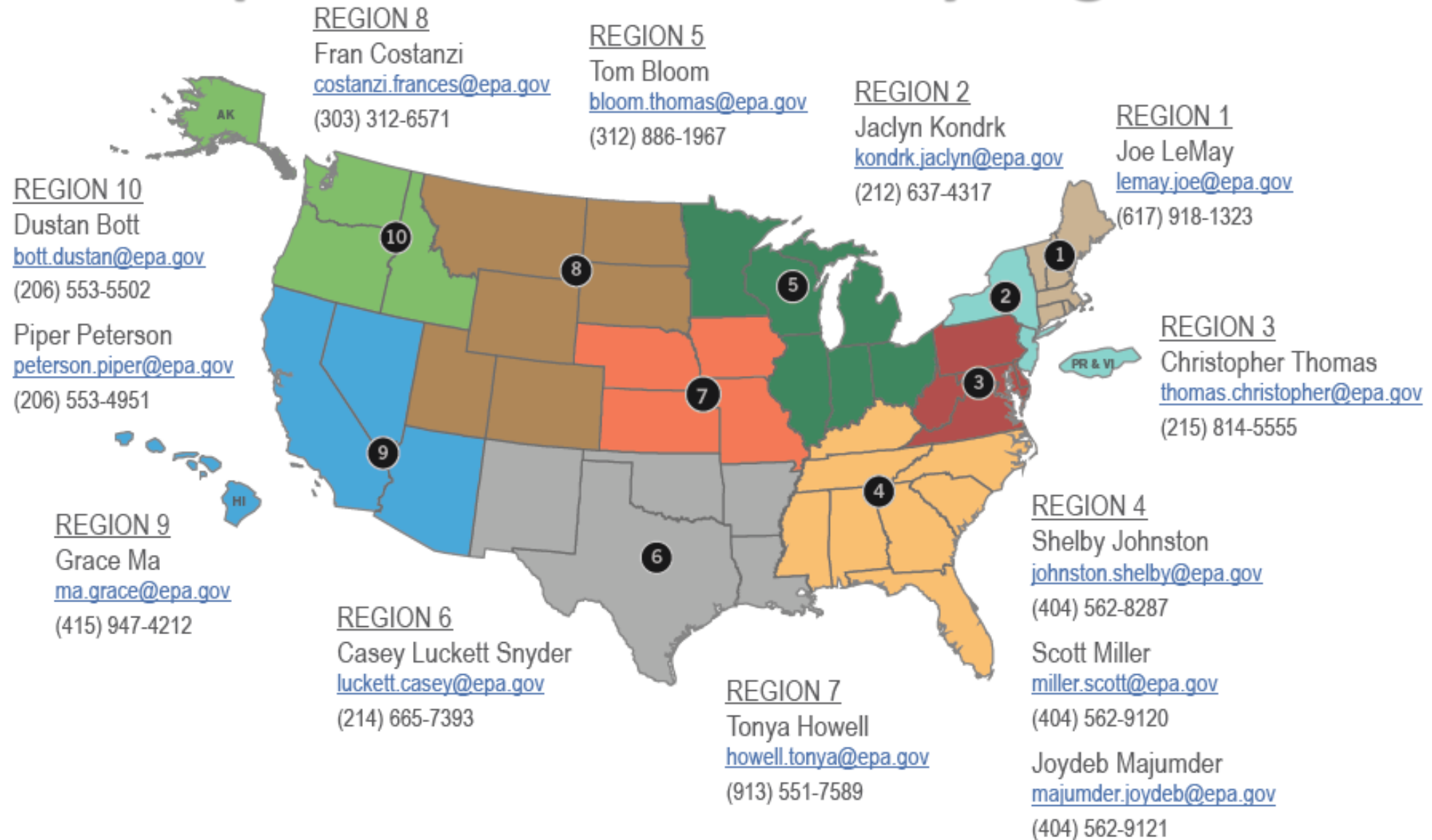
Superfund Redevelopment Mapper

- Web-based mapping tool created to interactively explore reuse opportunities on or near Superfund sites.
- Useful for:
 - Developers
 - Land managers
 - Local, state and tribal governments
 - Community development organizations

View additional training for the redevelopment mapper here: <https://clu-in.org/conf/player.cfm?num=1336>



Redevelopment Coordinators by Region



For More Information

Alexis Rourk Reyes

EPA Superfund Redevelopment Program

(202) 564-3179

Rourk.Alexis@epa.gov

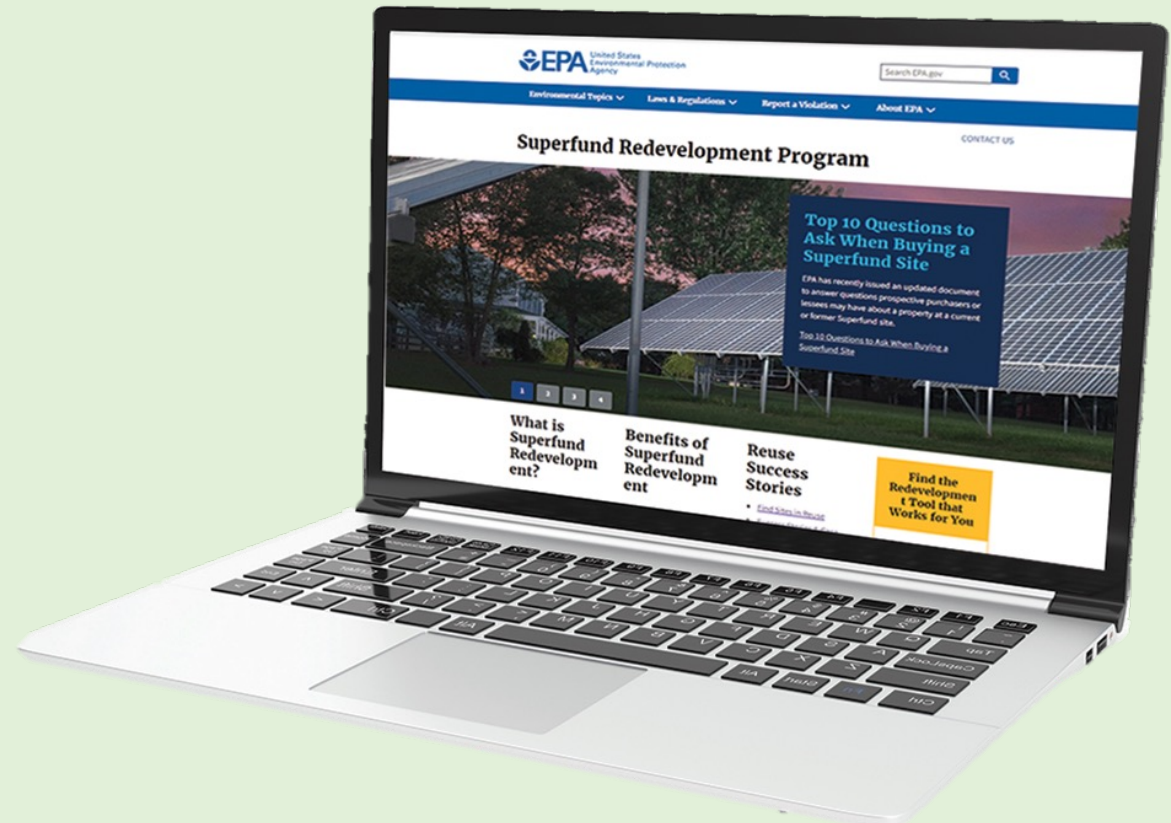
Chelsea Sebetich

OSRTI Community Involvement and

Program Initiatives Branch

(202) 566-1151

Sebetich.Chelsea@epa.gov



Visit the Superfund Redevelopment Program website at:

www.epa.gov/superfund-redevelopment

Questions?

Alexis Rourk Reyes

EPA Superfund Redevelopment Program

(202) 564-3179

Rourk.Alexis@epa.gov

Chelsea Sebetich

OSRTI Community Involvement and
Program Initiatives Branch

(202) 566-1151

Sebetich.Chelsea@epa.gov



Question Moderator - Josie Torres, Skeo