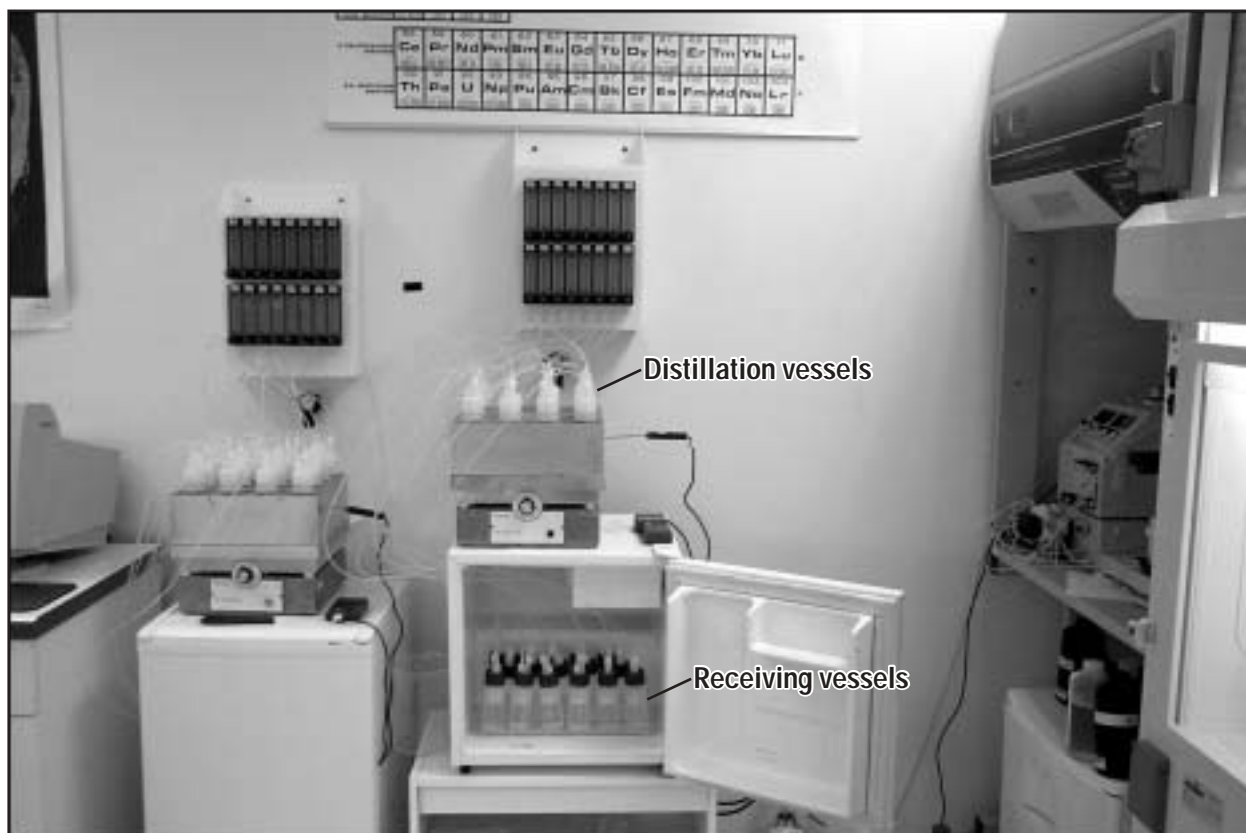


Determination of Methyl Mercury by Aqueous Phase Ethylation, Followed by Gas Chromatographic Separation with Cold Vapor Atomic Fluorescence Detection

Open-File Report 01-445



Determination of Methyl Mercury by Aqueous Phase Ethylation, Followed by Gas Chromatographic Separation with Cold Vapor Atomic Fluorescence Detection

By John F. De Wild, Mark L. Olson, and Shane D. Olund

U.S. GEOLOGICAL SURVEY
Open-File Report 01-445

Middleton, Wisconsin
2002



U.S. DEPARTMENT OF THE INTERIOR
Gale A. Norton, Secretary

U.S. GEOLOGICAL SURVEY
Charles G. Groat, Director

The use of firm, trade, and brand names in this report is for identification purposes only and does not constitute endorsement by the U.S. Government.

For additional information write to:

District Chief
U.S. Geological Survey
8505 Research Way
Middleton, WI 53562-3586

Copies of this report can be purchased from:

U.S. Geological Survey
Branch of Information Services
Box 25286
Denver, CO 80225-0286

CONTENTS

Abstract	1
Introduction	1
Summary of method	1
Contamination	2
Sample preservation	2
Method detection limit	2
Reagents	3
Standards	3
Analytical method	4
Sample preparation	4
Distillation equipment	4
Distillation procedure	4
Sample analysis	6
Analytical equipment	6
Analytical procedure	9
Data interpretation	10
Method performance	12
Summary and conclusions	12
References	14

FIGURES

1–3. Photographs showing:	
1. Methyl mercury distillation system. (A) entire system, (B) distillation block, (C) distillation vessel cap, and (D) receiving vessel cap	5
2. Methyl mercury reaction and purging system. (A) entire system, (B) sparging stopper fitted with a four-way valve, (C) reaction vessel in the closed (reaction) position, and (D) reaction vessel; in the open (purging) position	7
3. Methyl mercury desorption and detection system. (A) entire system, (B) sample trap, (C) gas chromatographic column, and (D) pyrolytic column	8
4. Graph showing example of methyl mercury detection chromatograph with peak identities	10

TABLES

1. Results from multiple analyses of surface water and ground water for detection limit assay	2
2a. Results for the analysis of ground water spiked at two different concentrations	12
2b. Results for the analysis of spiked and unspiked Canada surface water	13
2c. Results for the analysis of spiked and unspiked Everglades' surface water	13

ABBREVIATED WATER-QUALITY UNITS

Abbreviated water-quality units used in this report: Chemical concentration is given in milligrams per liter (mg/L), micrograms per liter ($\mu\text{g/L}$) or nanograms per liter (ng/L). Milligrams per liter is a unit expressing the concentration of chemical constituents in solution as weight (milligrams) of solute per unit volume (liter) of water. One thousand micrograms per liter is equivalent to one milligram per liter. One thousand nanograms per liter is equal to one microgram per liter.

Temperature in degrees Celsius ($^{\circ}\text{C}$) can be converted to degrees Fahrenheit ($^{\circ}\text{F}$) by use of the following equation:

$$^{\circ}\text{F} = 1.8 (^{\circ}\text{C}) + 32.$$

Other Abbreviations Used in this Report:

ng/L	nanograms per liter (parts per trillion)
ng/mL	nanograms per milliliter (parts per billion)
mg/L	milligrams per liter
$\mu\text{g/g}$	micrograms per gram (parts per million)
g	gram
mg	milligram (10^{-3} grams)
μg	microgram (10^{-6} grams)
ng	nanograms (10^{-9} grams)
pg	picogram (10^{-12} grams)
N	normality (the number of equivalents per liter of solution)
M	molarity (the number of moles of solute per liter of solution)
M Ω	microMohs
cm	centimeters (10^{-2} meters)
mm	millimeters (10^{-3} meters)
μM	micron (10^{-3} millimeters)
L	liters
mL	milliliters (10^{-3} liters)
μL	microliters (10^{-6} liters)
mL/min	milliliters per minute
in	inches

Determination of Methyl Mercury by Aqueous Phase Ethylation, Followed by Gas Chromatographic Separation with Cold Vapor Atomic Fluorescence Detection

by John F. De Wild, Mark L. Olson, and Shane D. Olund

Abstract

A recent national sampling of streams in the United States revealed low methyl mercury concentrations in surface waters. The resulting median and mean concentrations, calculated from 104 samples, were 0.06 nanograms per liter (ng/L) and 0.15 ng/L, respectively. This level of methyl mercury in surface water in the United States has created a need for analytical techniques capable of detecting sub-nanogram per liter concentrations. In an attempt to create a U.S. Geological Survey approved method, the Wisconsin District Mercury Laboratory has adapted a distillation/ethylation/gas-phase separation method with cold vapor atomic fluorescence spectroscopy detection for the determination of methyl mercury in filtered and unfiltered waters. This method is described in this report. Based on multiple analyses of surface-water and ground-water samples, a method detection limit of 0.04 ng/L was established. Precision and accuracy were evaluated for the method using both spiked and unspiked ground-water and surface-water samples. The percent relative standard deviations ranged from 10.2 to 15.6 for all analyses at all concentrations. Average recoveries obtained for the spiked matrices ranged from 88.8 to 117 percent. The precision and accuracy ranges are within the acceptable method-performance limits. Considering the demonstrated detection limit, precision, and accuracy, the method is an effective means to quantify methyl mercury in waters at or below environmentally relevant concentrations.

INTRODUCTION

Presently (2002), 41 States in the Nation have issued fish consumption advisories because of the high levels of mercury (Hg) in fish (U.S. Environmental Protection Agency, 2001a). Over the past 15 years, scientists have revealed that methyl mercury (CH_3Hg^+) is the specific form of mercury that bioaccumulates most readily in mammals (Bloom, 1992), is the most toxic, and where research priorities are needed to better understand and respond appropriately to this widespread contamination problem. Within the U.S. Geological Survey (USGS), the importance of Hg as a contaminant is demonstrated in that it has been selected as one of five priority issues to be addressed over the next 10 years as part of the National Water-Quality Assessment (NAWQA) program. Because of the increased awareness of environmental Hg contamination, and the understanding that the production and bioaccumulation of CH_3Hg^+ drives the contamination problem, the need for a reliable analytical method for CH_3Hg^+ has increased. Horvat and others (1993) were the first to describe a distillation/ethylation/gas-phase separation method for CH_3Hg^+ , which greatly reduces matrix-interference problems, and that largely has been adopted worldwide by Hg research laboratories. Since the start up of the USGS Wisconsin District Mercury Laboratory (WDML) in 1995, an adaptation of this method has been the operational method for CH_3Hg^+ determinations. The purpose of this report is to document the method and describe the results of a methodological test of the WDML's ability to provide quality data at ng/L concentrations for CH_3Hg^+ in water samples.

SUMMARY OF METHOD

Water samples are distilled to remove potential matrix interferences. The pH of the distillate is adjusted to 4.9 (to maximize ethylation potential) using acetate

buffer. The distillate then is ethylated using sodium tetraethyl borate (NaBEt_4) and allowed to react for 15 minutes. After reaction with NaBEt_4 , the distillate is purged with nitrogen gas (N_2) for 20 minutes and the ethylated mercury species are collected on a sample trap containing Carbotrap. These ethylated mercury species are desorbed thermally from the sample trap, separated using a gas chromatographic (GC) column, reduced using a pyrolytic column, and detected using a cold vapor atomic fluorescence spectrometry (CVAFS) detector.

This method may be used to determine CH_3Hg^+ concentrations in filtered or unfiltered water samples in the range of 0.040–5 ng/L. The upper range may be extended to higher concentrations by distilling smaller sample volumes or ethylating less of the distillate.

It should be noted that repeated attempts to analyze reagent grade water spiked with CH_3Hg^+ resulted in low recoveries (40–60 percent). The reasons for these low recoveries have not been resolved; however, other mercury research laboratories also obtain similar recoveries (J. Hurley, University of Wisconsin; C. Gilmour, Academy of Natural Sciences, oral commun., 2001). Therefore, reagent water is not an appropriate water source for spiked standard solutions and should not be used for quality-assurance or quality-control purposes.

Contamination

Methyl mercury analysis, as with all trace metal analysis, is extremely sensitive to contamination. Extreme care must be taken to avoid contamination in the collection and analysis steps of this method. All of the sample collection and analytical equipment that comes in contact with samples must be Teflon or glass and vigorously cleaned prior to and between uses. New Teflon equipment is rinsed with tap water, and cleaned by immersing in a 4 N hydrochloric acid (HCl) bath heated to 65°C for at least 48 hours. Immediately following removal from the bath, the equipment is immersed in fresh reagent grade water and rinsed at least three times with reagent grade water. Following the rinsing step, each sample bottle is filled to 25 percent full volume with 0.12 N HCl and capped. The exterior of the bottles and all other equipment is allowed to air dry on a Hg-clean bench under a laminar flow hood equipped with a High Efficiency Particulate Air (HEPA) filter which is 99.99 percent efficient on particles less than 0.3 microns in diameter. Dry equipment is double bagged in new zip-type bags. After the initial

48 hour cleaning, equipment needs to be immersed in the hot acid for only 24 hours.

Sample Preservation

Samples are acidified with 6N HCl to 1 percent, volume to volume (v/v), and kept in the dark to prevent photodegradation (Krabbenhoft and others, 2001) of CH_3Hg^+ . Samples preserved in this manner can be held for up to 6 months before analysis (Bloom, 1995).

Method Detection Limit

The U.S. Environmental Protection Agency (USEPA) has established a fish tissue methyl mercury enforcement standard of 0.3 $\mu\text{g/g}$ (U.S. Environmental Protection Agency, 2001b). A water column concentration of 0.058 ng/L was determined to correspond with a 0.3 $\mu\text{g/g}$ fillet concentration for age-3 largemouth bass (Brumbaugh and others, 2001). To demonstrate that the WDML can accurately quantify methyl mercury in water samples at or below this environmentally important level, a method detection limit study was performed. A method detection limit of 0.04 ng/L was determined from multiple analyses of an unspiked surface-water sample and a spiked ground-water sample (table 1) according to USEPA protocol (U.S. Environmental Protection Agency, 1990). The ground-water sample was collected from a residential well in a 1L Teflon bottle; 0.1 ng of CH_3Hg^+ standard was added to the sample at the lab and the sample was then acidified with 12N HCl to 1 percent (v/v). Each of these samples was distilled in seven separate distillation batches and analyzed over five days.

Table 1. Results from multiple analyses of surface water and ground water for detection limit assay
[All concentrations in nanograms per liter (ng/L)]

	Unspiked surface water	Spiked ground water
	0.134	0.093
	.095	.078
	.123	.095
	.102	.090
	.101	.064
	.116	.090
	.115	.099
	.095	.085
Average	.110	.087
Standard deviation	.014	.011
Percent relative standard deviation	12.9	12.9
Detection limit (standard deviation x 2.998)	.042	.033

Reagents

All reagents and/or dry chemicals used to make reagents must be of high purity and low in Hg.

- A. Reagent water: Ultra pure reagent grade water shown to be greater than 18 M Ω starting from a pre-purified source (distilled, RO, and others) and found to be less than 0.1 ng/L Hg. The water is delivered through a 0.2 μ M filter, as obtained from a Millipore Academic water-purification system or equivalent.
- B. Copper sulfate: 1M CuSO₄ in reagent water.
- C. Hydrochloric acid: Concentrated HCl found to be less than 0.5 ng/L Hg (EM Science Omni Trace or equivalent).
- D. Acetate buffer: 11.8 mL of glacial acetic acid and 27.2 g reagent grade sodium acetate trihydrate diluted to 100 mL with reagent water.
- E. Ethylating Reagent: 1 g of Sodium Tetraethyl Borate (NaBEt₄; Strem 11-0575) dissolved in 100 mL of 2 percent Potassium Hydroxide (KOH), weight to weight (w/w), solution that has been chilled to form slush. The NaBEt₄ solution is divided equally among 9 clean 15 mL Teflon vials that then are capped and frozen. This solution should be kept frozen and made fresh every 2 weeks. Never use NaBEt₄ solid or solutions that are yellow in color. *Note: NaBEt₄ is toxic, gives off toxic gases (triethylboron) and is spontaneously combustible. Any NaBEt₄ use should take place in a high-volume fume hood. To discard unused portions of ethylating reagent, empty bottles into a large beaker of 6N hydrochloric acid (HCl) inside a high-volume fume hood. Place beaker on a hotplate and boil down to half-volume, then discard the remaining solution as an acid waste. Triethylboron will boil off into the air where it is oxidized to harmless boric acid.*
- F. Nitrogen (N₂). Ultra high purity grade 5.0 N₂ passed through a gold bead trap attached to the outlet of the tank to remove any Hg.
- G. Argon (Ar). Ultra high purity grade 5.0 Ar passed through a gold bead trap attached to the outlet of the tank to remove any Hg.

Standards

Upon receipt at the laboratory or on the day of preparation, reagent containers should be labeled with the date received or made and the initials of the person preparing them. The stock and substock standards should be stored outside of the Hg-clean analytical laboratory to prevent contamination of the laboratory.

- A. CH₃Hg⁺ stock solution (1,000 mg/L CH₃Hg⁺ as Hg): 1.252 g of reagent grade methyl Hg chloride (Strem 80-2250) is dissolved in 1L of 2 percent glacial acetic acid, 0.2 percent HCl v/v.
- B. CH₃Hg⁺ substock solution (1 mg/L CH₃Hg⁺ as Hg): Dilute 100 μ L of CH₃Hg⁺ stock solution to 100 mL with 2 percent glacial acetic acid, 0.2 percent HCl v/v.
- C. CH₃Hg⁺ working standard (1 ng/mL CH₃Hg⁺ as Hg): Dilute 100 μ L of CH₃Hg⁺ substock solution to 100 mL with 2 percent glacial acetic acid, 0.2 percent HCl v/v. Because measurement errors are present in laboratory processes the exact concentration of the working standard must be determined analytically. The following procedure is used to determine the exact concentration of the working standard.
 1. Add 8.0 mL of reagent grade water; 1.0 mL of the CH₃Hg⁺ working standard and 1.0 mL of bromine monochloride (BrCl) to four 15 mL Teflon vials.
 2. Add 9.0 mL of reagent grade water and 1.0 mL of BrCl to four 15 mL Teflon vials.
 3. Double bag and place the eight vials described in steps 1 and 2 into an oven at 50°C overnight and analyze each aliquot for total Hg by USEPA method 1631.
 4. Analyze four separate 1.0 mL aliquots of the CH₃Hg⁺ working standard for inorganic Hg (Hg(II); readily reducible with SnCl₂) using USEPA method 1631 without the BrCl oxidation step.
 5. Subtract the average blank concentration determined from analyses of solutions in step 2 from the average concentration determined from analyses of the solutions in step 1 to determine the reagent blank corrected concentration of the working standard.

6. Subtract the average concentration of the Hg(II) in the CH₃Hg⁺ working standard, determined in step 4, from the reagent blank corrected value determined in step 5 to determine the actual working-standard concentration.

ANALYTICAL METHOD

Sample Preparation

Samples must be distilled prior to analysis to remove potential matrix interferences such as reduced sulfur containing compounds, calcium, and humic acids associated with dissolved organic carbon (Horvat and others, 1993).

Distillation Equipment

The distillation system (fig. 1a) consists of a solid aluminum heating block, a small refrigerator, Teflon distillation and receiving vessels, and Teflon transfer lines.

- A. A custom fabricated aluminum block (fig. 1b) is heated with a Thermolyne type 2200 (or equivalent) hot plate during the distillation step. A temperature probe placed in the center of the block monitors block temperature.
- B. A small commercially available refrigerator is used to hold the receiving vials, aid in condensation, maintain distillate at 4°C and protect the distillate from exposure to light. Small holes are drilled in the side of the refrigerator to accommodate the transfer lines.
- C. The distillation and receiving vessels are 125 mL Teflon bottles (Nalgene catalogue number 1630-0004 or equivalent). The distillation vessel caps (fig. 1c) and receiving vessel caps (fig. 1d) consists of a Teflon insert (Saville part number 0738-4-2 or equivalent) molded integrally with two transfer ports equipped with compression fittings for 1/4-in. (6.4 mm) outside diameter (O.D.) tubing. A length of 1/4-in. O.D. tubing is inserted into one of the ports so that it will extend to within 2 mm of the bottom of the distillation and receiving vessels to insure complete sample purging and recondensation, respectively. A short length of 1/4-in. O.D. tubing also must be inserted flush with the lower side of the insert in the remaining port to accommodate the transfer line. The Teflon bottle caps must be machined to accommodate the insert and form an airtight seal for the distillation vessels, whereas the green polypropylene cap included with the insert can be used for the receiving vessels. Teflon transfer lines of 1/8-in. (3.2 mm) O.D. are connected by friction fit from the outlet tubing of the distillation vessel to the inlet tubing of the receiving vessel.
- D. Flowmeters capable of maintaining a flow of 60 mL/min of N₂ are placed immediately upstream of the distillation vials to maintain constant and equal flow to all distillation vials. Gas is supplied through 1/8-in. O.D. Teflon line inserted into the inlet tubing of the distillation vessel.

Distillation Procedure

A WDMML distillation batch consists of 11 environmental samples, 3 method blanks, a matrix spike, and a matrix spike duplicate. Distillation blanks are reagent grade water acidified with 12N HCl to 1 percent (v/v). The matrix spike and matrix-spike duplicates are prepared by adding a known amount of working standard to two of three bottles containing similar volumes of the same sample.

- A. Dispense approximately 60 mL of water (sample or reagent water) into each distillation vessel and add 1 mL of 1M CuSO₄ (to bind sulfide—Olson and others, 1997) to each of the bottles in the batch. Record the bottle identifier, tare weight and full weight of each vessel. Cap each of the vials with the distillation cap corresponding to the block position to be occupied by that vial.
- B. Dispense approximately 40 mL of reagent water to each of the receiving vessels. Record the bottle identifier, tare weight and bottle plus reagent water weight of each. Cap each of the vials with the receiving cap corresponding to the block position occupied by the matching distillation vessel.

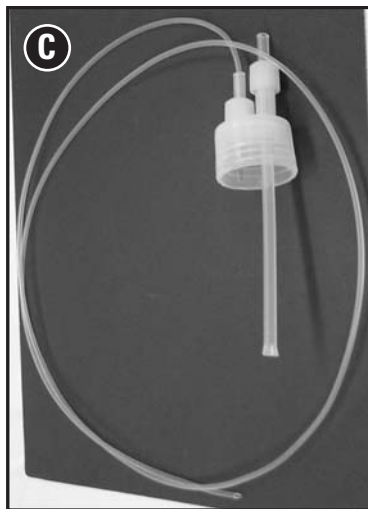
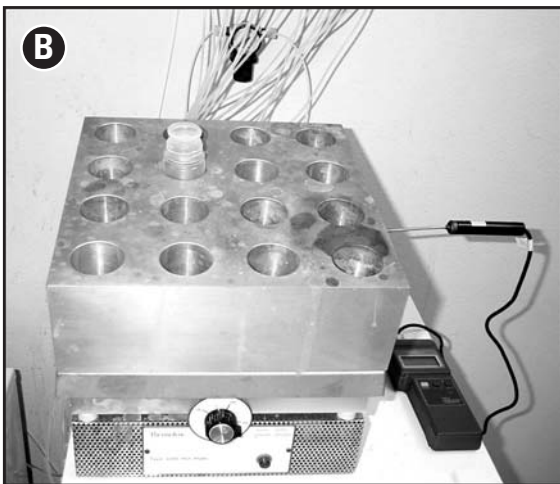
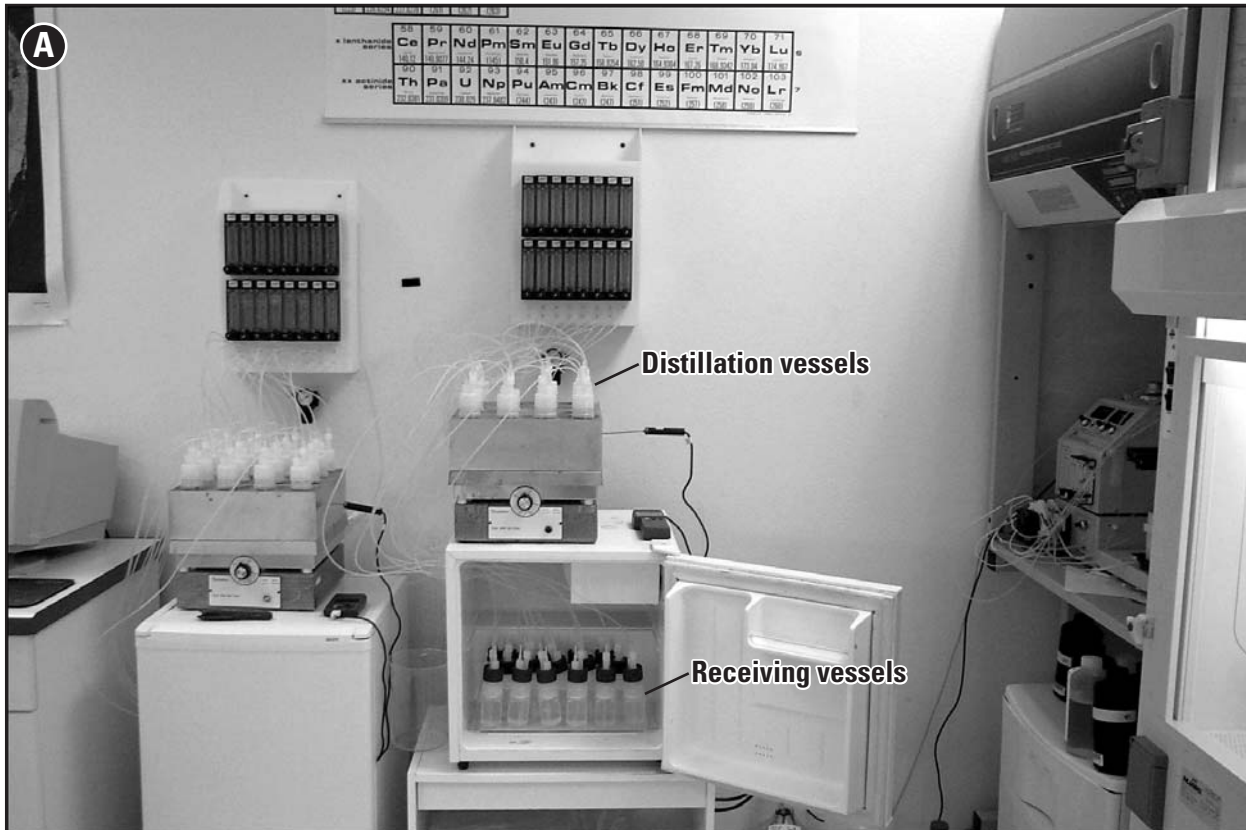


Figure 1. Methyl mercury distillation system: (A) entire system, (B) distillation, (C) distillation vessel cap, and (D) receiving vessel cap.

- C. Place the distillation vials in their respective positions in the distillation block and thread the transfer lines through the numbered holes in the refrigerator.
- D. Turn on the N₂ flow to the flowmeters and connect the gas lines to the inlet ports of the distillation caps.
- E. Place the receiving vial tray in the refrigerator and begin placing the receiving vials into the tray. As the receiving vials are placed into the tray, connect the transfer lines to the inlet ports of the receiving caps. Check for bubbling in the reagent water. This checking verifies a leak-free system.
- F. Adjust the flow on the flowmeters to 60 mL/min. Adjust the hot plate temperature to maintain a block temperature of 120 +/- 5°C. This temperature should result in a distillation rate of 6–8 mL per hour but adjustments may need to be made for individual systems.
- G. Check the receiving vials to ensure unrestricted flow, the distillation vials to ensure no leakage, and the block temperature for stability periodically throughout the distillation.
- H. Remove the transfer lines from the receiving vessels and the distillation vessels from the block when approximately 20 percent of the volume in the distillation vessel remains. The distillation caps as well as the inside of the transfer lines should be rinsed thoroughly with reagent water.
- I. Weigh the receiving vessels and record the weight for later determination of the percent of the original sample that was distilled. Cap the bottles and place in a refrigerator at 4°C until analysis (distillates should be analyzed within 48 hours).

Sample Analysis

After the samples have been distilled, they are ready for analysis and should be analyzed within 48 hours. The analysis is a two-step process consisting of purging the mercury species from the distillate and detecting the mercury species with a cold vapor atomic fluorescence detector.

Analytical Equipment

The analytical portion of the process requires two separate systems; one for loading the traps (fig. 2a) and one for desorbing and detecting the Hg species (fig. 3a). The analytical equipment used is listed below.

- A. Flow meters equipped with needle valves capable of delivering a N₂ flow of 250 mL/min to the reaction vessels.
- B. Reaction vessels (figs. 2c and 2d) are 250 mL Erlenmeyer flask with a standard/taper 24/40 neck and a sparging stopper fitted with a four-way valve (fig. 2b).
- C. Sample traps (fig. 3b) are made from 7 mm quartz tubes, 10 cm long with a constriction at 3 cm from the outlet end (the trap identifier is placed at this end); about 0.2 g (3 cm in the tube) of Carbotrap (graphitized carbon black, Supelco 2-0287 or equivalent) is placed in the center and contained by quartz wool plugs at either end. Small pieces of 7 mm Teflon tubing are friction fit to the ends of the sample traps to provide a connection point between the sample trap and the reaction vessel, and to provide connection points in the analytical train.
- D. An analytical balance capable of measuring to the nearest 0.1 g is used to determine sample volumes to the nearest 0.1 mL.
- E. Pneumatic fixed-volume and variable pipettes ranging from 5 µL to 5 mL.
- F. Hewlett Packard model HP3395 integrator or equivalent, connected to a timer, controls the analytical system. The timer is connected to a transformer that is connected to a Nichrome wire coil wrapped to fit around the sample trap.
- G. The gas chromatographic column (fig. 3c) is a 4 mm inside diameter (I.D.), 6 mm O.D., glass column 50 cm long and filled with Chromosorb WAW-DMSC 60/80 mesh (Supelco 2-0152) enclosed in a glass sheath 2 cm in diameter and 25 cm long. This column is housed in a cylindrical oven (figs. 3a and 3c) connected to a transformer, which supplies a constant voltage to maintain a temperature of 95 +/- 5°C. Column

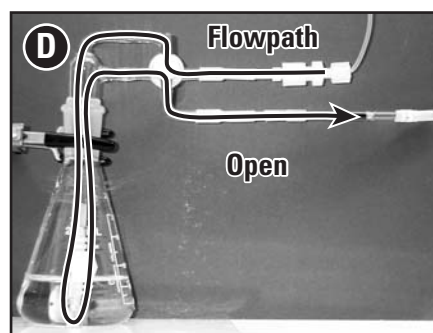
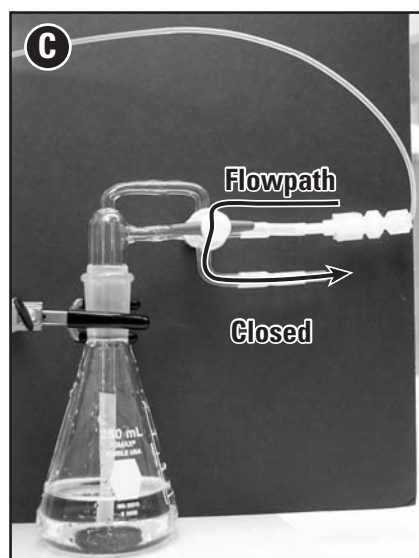
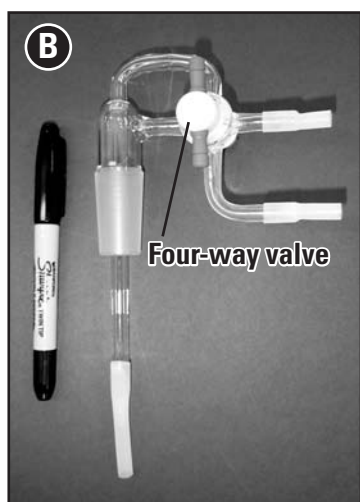


Figure 2. Methyl mercury reaction and purging system: (A) entire system, (B) sparging stopper fitted with a four-way valve, (C) reaction vessel in the closed (reaction) position, and (D) reaction vessel in the open (purging) position.

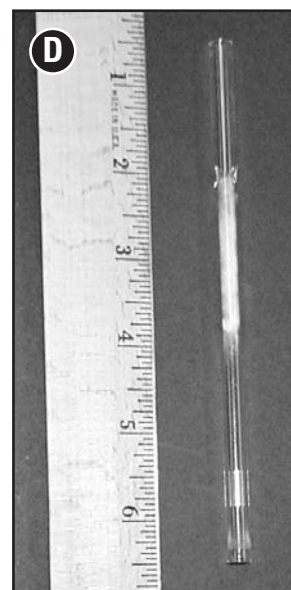
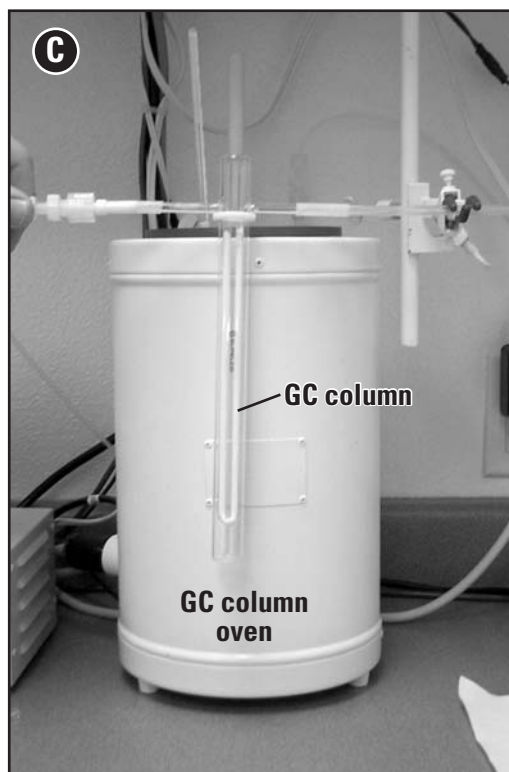
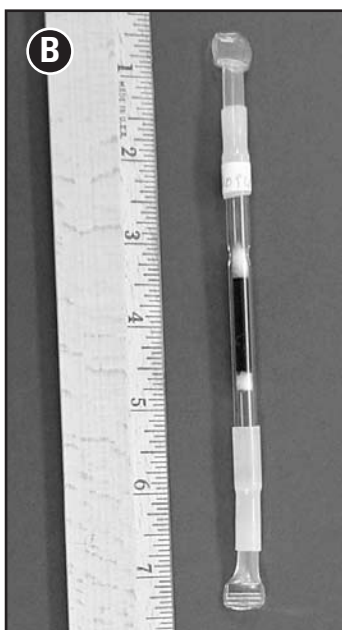
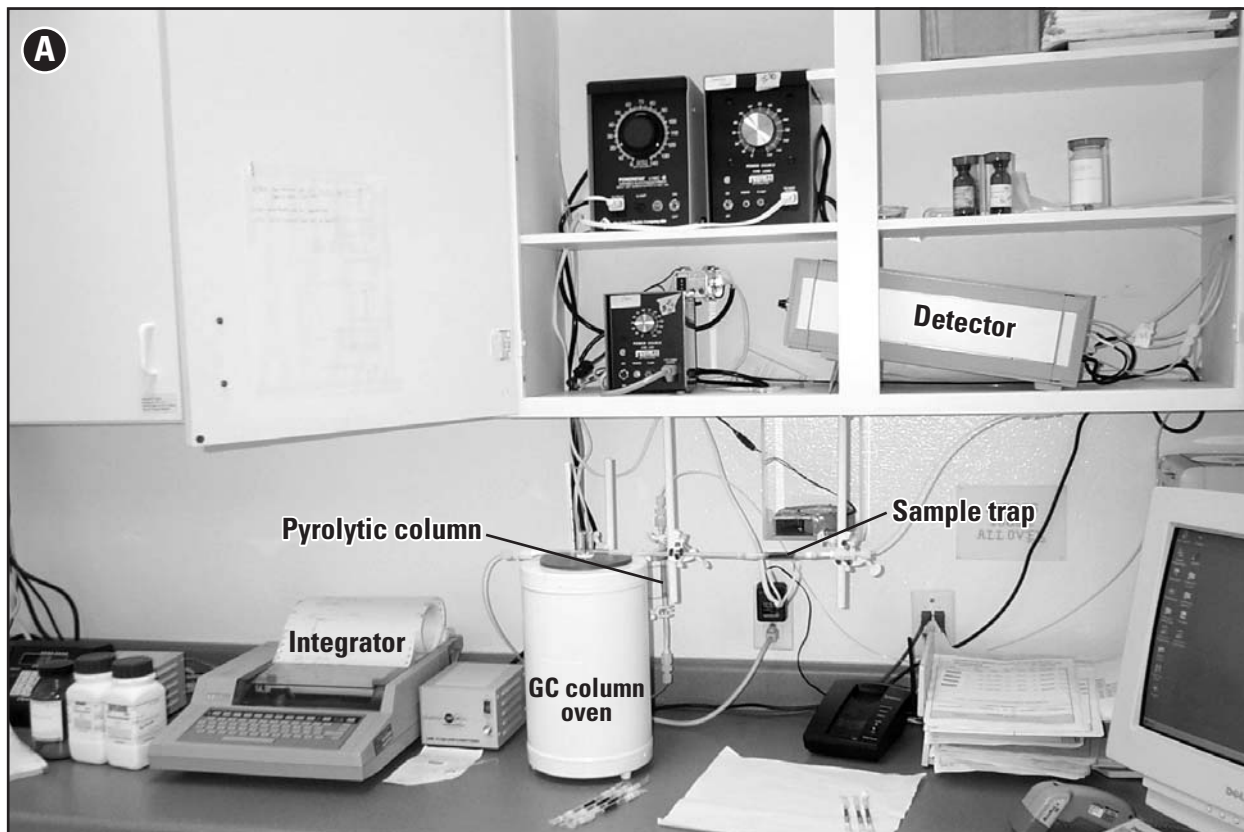


Figure 3. Methyl mercury desorption and detection system: (A) entire system, (B) sample trap, (C) gas chromatographic column, and (D) pyrolytic column.

- oven temperature may need to be adjusted on individual systems to insure good peak separation and symmetry.
- H. The pyrolytic column (fig. 3d) is a 7 mm quartz tube 15 cm in length with the center 4–5 cm filled with quartz wool. Small pieces of 7 mm Teflon tubing are friction fit to the ends of the pyrolytic column to provide connection points in the analytical train. A length of nichrome wire is wrapped around the tube to cover the length of quartz wool. The wire is connected to a transformer that heats the column to approximately 800°C.
 - I. The detector is a commercially available Model 2500 CVAFS Mercury Detector from Tekran (Toronto, Ontario) equipped with a mass flow controller capable of maintaining 20 mL/min of Argon flow through the entire analytical train. Detector analog output returns to the HP3395 integrator where the peak areas are recorded.

Analytical Procedure

A WDML analytical batch generally consists of 2 distillation batches, as well as standards and blanks used to evaluate the performance of the analytical train. All chemical additions to the reaction vessels are carried out in a fume hood and then the vessels are transferred to a clean bench below a laminar flow hood equipped with a HEPA filter which is 99.99 percent efficient on particles less than 0.3 microns in diameter.

- A. Create a standard curve by adding varying amounts of working standard (typically 100, 50, 25, and 10 μL , but the range needs to cover the expected concentrations in the analytical batch) to approximately 100 mL of reagent water in each of the reaction vessels. Pipette 200 μL of acetate buffer and 100 μL of NaBEt_4 to each of the reaction vessels. The NaBEt_4 reagent serves to derivatize the two remaining ionic Hg species after the distillation step (inorganic Hg(II) and CH_3Hg^+) to their ethylated forms (diethyl Hg and methylethyl Hg, respectively). Elemental Hg does not react with the NaBEt_4 . *Note: The NaBEt_4 needs to remain near 0°C. It should be removed from the freezer approximately 3 minutes before being added to the reaction vessels and placed in a dark place to partially thaw. A new vial of NaBEt_4 should be used each day.*
- B. Tighten the sparging stoppers, ensure the four-way valve is in the closed position (fig. 2c), gently swirl the reaction vessels, and allow the reaction to proceed for 15 minutes. After the reaction time has elapsed, remove the plugs from the ends of the sample traps. Place the sample traps onto the outlet of the reaction vessels, with the identification number downstream, turn the four-way valve to the open position (fig. 2d), and allow grade 5 N_2 to purge the vessel at a rate of 250 mL/min for 20 minutes.
- C. After the samples have been purged, turn the four-way valve to the closed position and remove the sample trap from the reaction vessel outlet. Remove the N_2 line from the inlet of the four-way valve and place the sample trap on the end of the N_2 line. Allow the N_2 to flow through the sample traps at 250 mL/min for 7 minutes to remove any water vapor that has collected on the sample trap.
- D. Four ethylation blanks are prepared by adding approximately 100 mL of reagent grade water, 200 μL of acetate buffer, and 100 μL of NaBEt_4 to separate reaction vessels. Then proceed as in step B.
- E. While one set of reaction vessels and sample traps are being used to collect the purged sample, the other set can be desorbed and analyzed. Remove the sample traps from the N_2 lines, attach the N_2 lines to the inlets of the four-way valves, and cap both ends of the sample traps.
- F. To desorb and analyze the traps, remove the plugs from the ends of the first trap and place it into the analytical train (fig. 3a) by threading it, with the identification number upstream, through the center of the nichrome wire coil. Center the nichrome wire over the Carbotrap, allow the flow to stabilize for approximately 30 seconds, and press start on the integrator. The nichrome wire will heat to 250°C with a ramp time of 30 seconds to desorb the Hg from the sample trap. As the Hg is desorbed from the sample trap it is carried by the Ar carrier gas at a flow of 20 mL/min into the GC column where the elemental Hg, methylethyl Hg and the diethyl Hg are separated. Following separation, the individual Hg species are carried into the pyrolytic column where the methylethyl and diethyl Hg species are reduced thermally to elemental Hg.
- G. The CVAFS detector can only detect elemental mercury. The detector then outputs a millivolt signal to the integrator resulting in three distinct peaks (fig. 4).

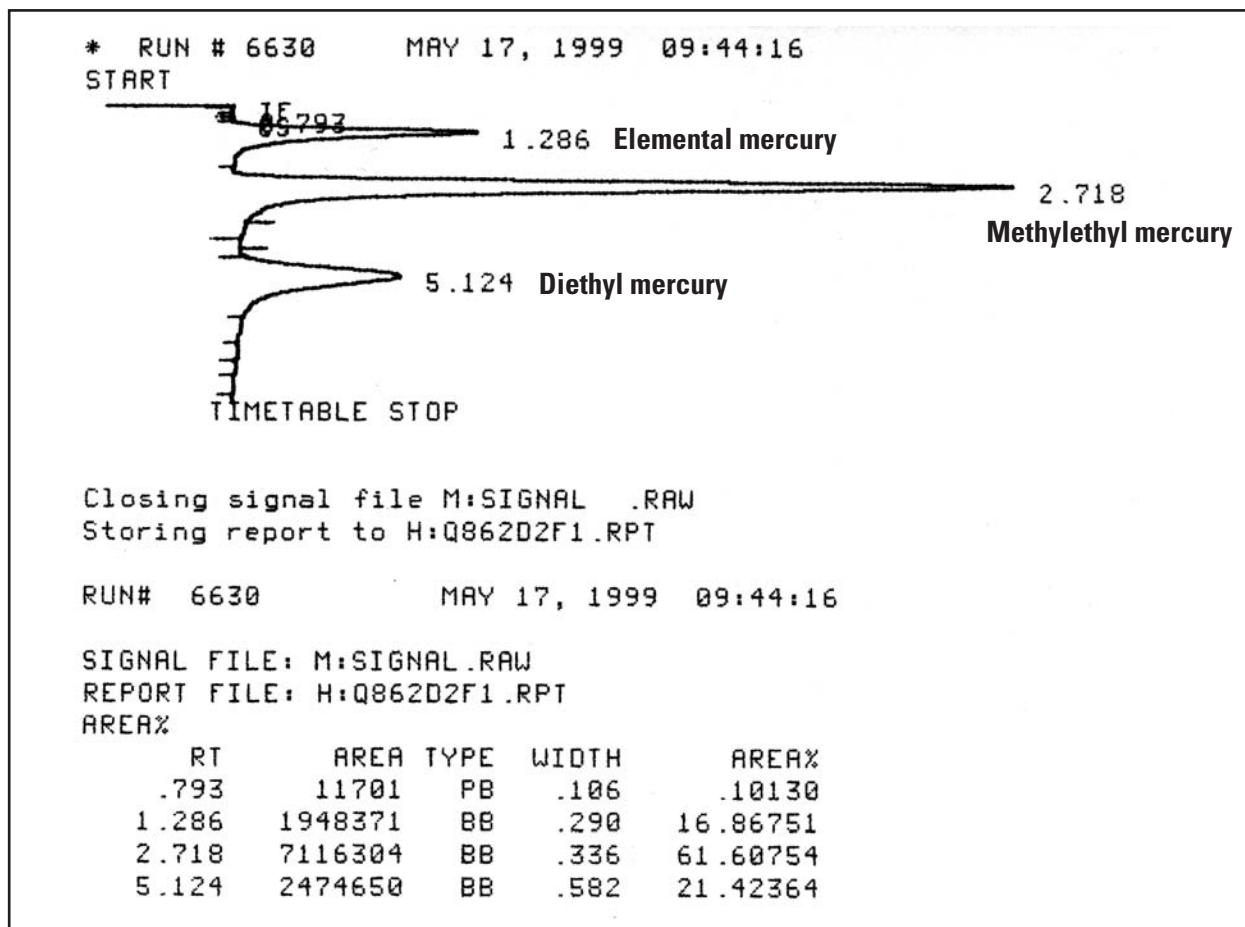


Figure 4. Example of methyl mercury detection chromatograph with peak identities.

H. After the standard curve and the ethylation blanks have been analyzed, and found to meet the daily quality objectives (DQO), the distillates from the batch can be analyzed. The procedure for analyzing the method blanks, environmental samples, matrix spikes and matrix-spike duplicates are identical to the procedure used for the standards and ethylation blanks. Simply dispense an appropriate amount of distillate into the reaction vessel, add the acetate buffer and the NaEt₄ and proceed as in step B. An appropriate amount of sample would be an amount that produces a CH₃Hg⁺ peak with an area that falls within the calibration range (for most water samples this amount is the entire distillate volume).

Data Interpretation

The integrator output should show three distinct peaks for a given sample (fig. 4). A peak for the elemental Hg appears at approximately 1 minute and 30 seconds, the methylethyl Hg peak at 2 minutes and 40 seconds, and the diethyl Hg peak appears at 4 minutes and 40 seconds. The methylethyl Hg peak is the peak of interest and the area under its curve is used to calculate concentration of CH₃Hg⁺ in the original sample.

Peak areas obtained for the standards during the calibration are corrected for CH₃Hg⁺ in the acetate buffer and the NaEt₄ by subtracting the average peak area of the ethylation blanks (DQO is absolute mass less than or equal to 2 pg). Simple linear regression, forcing zero intercept, is applied to the peak area/mass combinations to determine the best-fit line (DQO is a correlation coefficient equal to or greater than 0.995) and establish the equation used to determine the mass of the sample aliquot from its resulting peak area. Each distillation batch contains three method blanks (DQO is an absolute mass less than or equal to 5 pg) to evaluate the contribution of CH₃Hg⁺ from the distillation process and reagents. The average mass found in these blanks is subtracted from the mass in the sample dis-

tillates. After correcting for the method blanks, the final sample concentrations are corrected for the fraction distilled (because the fraction of methyl mercury distilled is equal to the fraction of the sample volume distilled), and the difference between the volume of the distillate ethylated and the total volume of distillate recovered. The following series of formulas are used to calculate final concentration.

SAMPLE VOLUME:

$$V_s = W_{F1} - W_T,$$

where

V_s = sample volume

W_{F1} = weight of reaction vessel with sample

W_T = weight of reaction vessel

FRACTION DISTILLED:

$$D = V_S / (W_{F2} - W_W),$$

where

D = fraction distilled

V_S = sample volume

W_{F2} = weight of receiving vessel after distillation

W_W = weight of receiving vessel with reagent water before distillation

MASS OF Hg IN ALIQUOT ANALYZED

$$M_A = (PA/S) - MB_{AVE},$$

where

M_A = mass per aliquot

PA = peak area

S = slope of calibration line

MB_{AVE} = average mass found in method blanks

MASS OF Hg IN ORIGINAL SAMPLE

$$M_S = (M_A / D) * ((W_{F2} - W_{T2}) / (W_{F2} - W_A)),$$

where

M_S = mass in original sample

M_A = mass per aliquot

D = fraction distilled

W_{F2} = weight of receiving vessel after distillation

W_{T2} = weight of receiving vessel

W_A = weight of receiving vessel after pouring off aliquot to be ethylated

FINAL CH_3Hg^+ CONCENTRATION

$$C = M_S / V_S,$$

where

C = concentration

M_S = mass in original sample

V_S = sample volume

Table 2a. Results for the analysis of ground water spiked at two different concentrations

[All concentrations in nanograms per liter (ng/L)]

	Ground water spiked at 0.1 ng/L	Percent recovery	Ground water spiked at 1.0 ng/L	Percent recovery
	0.093	95.2	0.927	92.6
	.078	79.9	1.15	114.3
	.095	97.6	.933	93.1
	.090	91.6	.835	83.4
	.064	62.2	.886	88.5
	.090	91.8	1.088	108.6
	.099	101.6	.995	99.4
	.085	87.0	.843	84.2
	.087	88.8	.956	95.5
Average	.087	88.8	.956	95.5
Standard deviation	.011	11.5	.112	11.21
Percent relative standard deviation	12.9	12.9	11.7	11.7

METHOD PERFORMANCE

Precision and accuracy for this method were evaluated using three water sources at two concentrations and analyzed seven times each (U.S. Geological Survey, Office of Water Quality Technical Memorandum 98.05) over a period of five days using different calibration curves. Memorandum 98.05 recommends the use of surface water, ground water, and reagent water as the three sources; however, multiple analyses of reagent water spiked with CH_3Hg^+ resulted in consistently poor recoveries of CH_3Hg^+ for undetermined reasons and, thus, reagent water was not used to evaluate this method. Instead, ground water from a residential well, surface water from a freshwater lake in Canada, and surface water from the Everglades in southern Florida were used to evaluate method performance. The ground water was found to contain no CH_3Hg^+ on initial analysis; therefore, analyte was spiked into this matrix so that it could be evaluated for precision and accuracy. Both surface-water samples contained CH_3Hg^+ at detectable (greater than 0.04 ng/L) concentrations. The USGS requires that sample matrices be evaluated at two different concentrations; therefore, the ground-water sample was spiked at two different concentrations and the surface-water samples were spiked with analyte so that two different concentrations could be evaluated. The results of the analyses of these matrices are presented in tables 2a–c.

Method precision was evaluated by examining the percent relative standard deviation of the concentrations obtained from all analyses of each matrix at each concentration. The percent relative standard deviations ranged from 10.2 to 15.6. Average recoveries of the added analyte obtained at the different concentrations in the different matrices evaluated ranged from 88.8 to 117 percent, which are considered within acceptable method performance limits for accuracy at laboratories using this analytical method (Nicolas Bloom, Frontier Geosciences, Seattle, Washington, written communication, 1999).

SUMMARY AND CONCLUSIONS

This report documents a method for the analysis of CH_3Hg^+ in water samples, and describes the results of a methodological test of the WDML's ability to provide quality CH_3Hg^+ data at ng/L concentrations. Acceptance of this method by the USGS will help to establish a National database of CH_3Hg^+ concentrations from areas across the nation. The need for a reliable method of CH_3Hg^+ detection was precipitated by the National Water-Quality Assessment program's identification of mercury as one of the top five priority issues over the next 10 years coupled with the fact that CH_3Hg^+ is the species of mercury that most readily bioaccumulates in mammals.

The Wisconsin District Mercury Laboratory has adapted a distillation/ethylation/gas-phase separation

Table 2b. Results for the analysis of spiked and unspiked Canada surface water.
 [All concentrations in nanograms per liter (ng/L); --, no sample]

	Surface water unspiked	Surface water spiked at 0.627 ng/L ¹	Percent recovery
	0.134	0.638	101.8
	.095	.571	91.0
	.123	.606	96.6
	.102	.668	106.6
	.101	.573	91.4
	.116	.564	89.9
	.115	.482	76.9
	.095	--	--
Average	.110	.586	93.5
Standard deviation	.014	.060	9.57
Percent relative standard deviation	12.9	10.2	10.2

¹Concentration calculated by adding average concentration of sample to known spike addition

Table 2c. Results for the analysis of spiked and unspiked Everglades' surface water
 [all concentrations in nanograms per liter (ng/L)]

	Everglades water unspiked	Everglades water spiked at 1.25 ng/L ¹	Percent recovery
	0.255	1.51	120.8
	.300	1.63	130.1
	.236	1.02	81.6
	.280	1.48	118.2
	.275	1.47	118.0
	.323	1.64	131.2
Average	.278	1.46	116.6
Standard deviation	.031	0.227	18.2
Percent relative standard deviation	11.1	15.6	15.6

¹Concentration calculated by adding average concentration of sample to known spike addition.

method with cold vapor atomic fluorescence spectroscopy detection for the determination of methyl mercury in filtered and unfiltered waters. A method detection limit of 0.04 ng/L was proven to be achievable from multiple matrices using this method. The accuracy of this method also was tested using multiple matrices at different concentrations and found to be acceptable based on average spike recoveries ranging from 88.8 to 117 percent.

Reagent water is not an appropriate matrix to evaluate method performance as spiked reagent water consistently results in low recovery. Low ionic strength water samples such as snow have also resulted in low recoveries at the WDML as well as other laboratories using this method. Samples high in dissolved organic carbon (DOC) also can be difficult to evaluate because the spike recoveries can be quite inconsistent. When analyzing these types of water samples with these matrices, professional judgment and caution must be used in evaluating method performance.

REFERENCES

- Bloom, N.S., 1992, On the methylmercury content of fish: Canadian Journal of Fisheries and Aquatic Sciences, v. 49, p. 1131–1140.
- _____, 1995, Ultraclean sampling and handling: Environmental Laboratory, March/April, p. 20–25.
- Brumbaugh, W.G., Krabbenhoft, D.P., Helsel, D.R., Weiner, J.G., and Echols, K.R., 2001, A national pilot study of mercury contamination of aquatic ecosystems along multiple gradients—bioaccumulation in fish: USGS/BRD/BSR-2001-0009, 25 p.
- Horvat, M., Liang, L., and Bloom, N.S., 1993, Comparison of distillation with other current isolation methods for the determination of methyl mercury compounds in low level environmental samples, part II—water: Analytica Chimica Acta, v. 282, p. 153–168.
- Krabbenhoft, D.P., Olson, M.L., Dewild, J.F., Clow, D.W., Striegl, R.S., Dornblaser, M.M., and VanMetre, Peter, in press, Mercury loading and methylmercury production and cycling in high-altitude lakes from the Western United States: Biogeochemistry.
- Krabbenhoft, D.P., Wiener, J.G., Brumbaugh, W.G., Olson, M.L., DeWild, J.F., and Sabin, T. J., A national pilot study of mercury contamination of aquatic ecosystems along multiple gradients, in Morganwalp, D.W., and Buxton, H.T., eds., U.S. Geological Survey Toxic Substances Hydrology Program, proceedings of the technical meeting, Charleston, S.C., March 8-12, 1999: U.S. Geological Survey Water-Resources Investigations Report 99-4018-B, p. 147–160.
- Olson, M.L., Cleckner, L.B., King, S.A., Hurley, J.P., and Krabbenhoft, D.P., 1997, Resolution of matrix effects on analysis of total and methyl mercury in aqueous samples from the Florida Everglades: Fresenius Journal of Analytical Chemistry, v. 358, p. 392–396.
- U.S. Environmental Protection Agency, 1990, Guidelines establishing test procedures for the analysis of pollutants (Appendix B, Part 136, Definition of procedures for the determination of the method detection limit—Revision 1.11): Revised as of July 1, 1999, p. 537–539.
- _____, 2001a, Fact sheet update—National Listing of Fish and Wildlife Advisories: Washington, D.C., Office of Water, EPA-823-F-01-010, 6 p.
- _____, 2001b, Water quality criterion for the protection of human health—methyl mercury: Washington, D.C., Office of Science and Technology, Office of Water, EPA-823-R-01-001, p. 7-1
- U.S. Geological Survey, 1998, Policy for the approval of U.S. Geological Survey water-quality analytical methods: Office of Water Quality Technical Memorandum 98.05, [<http://water.usgs.gov/admin/memo/QW/qw98.05.html>]