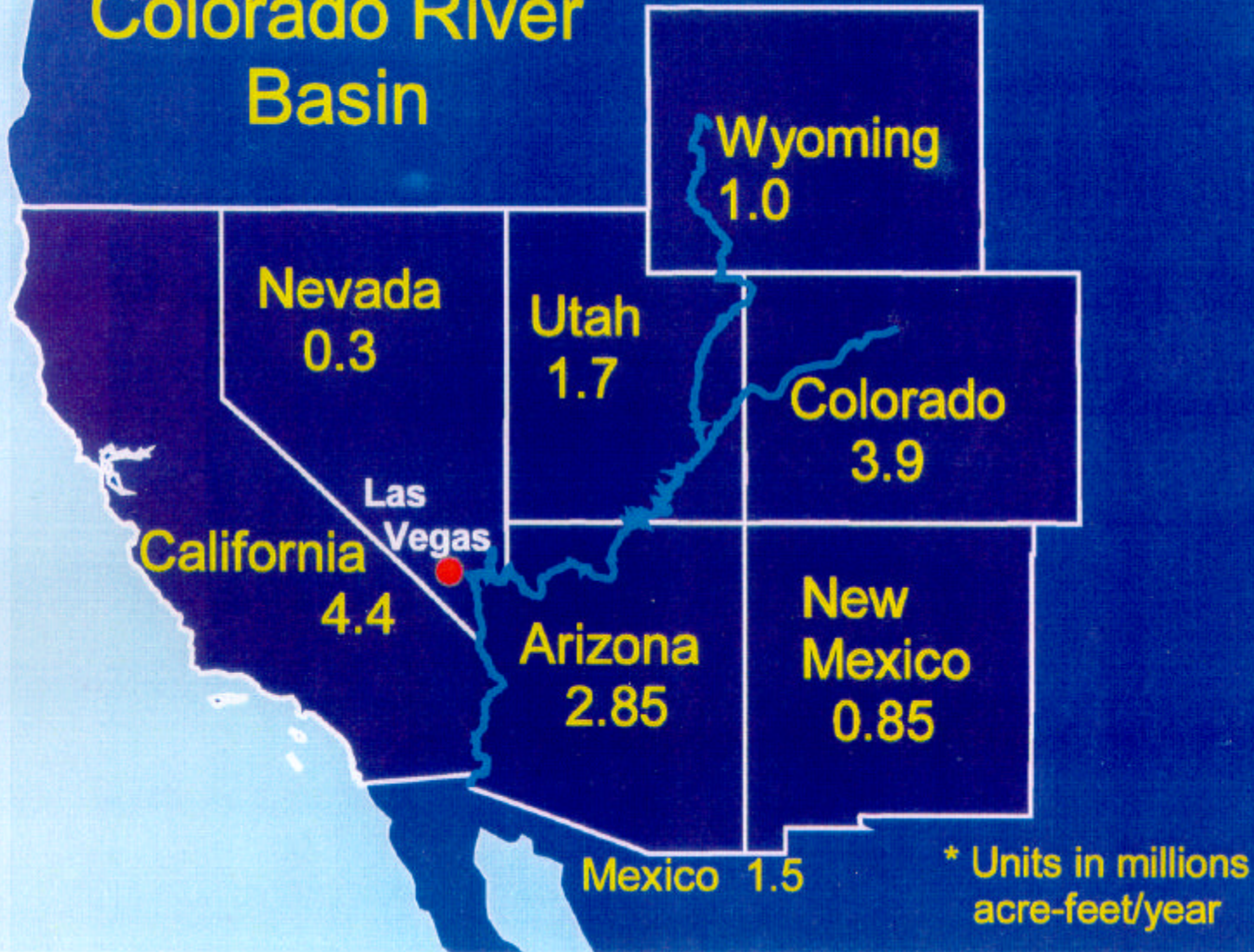


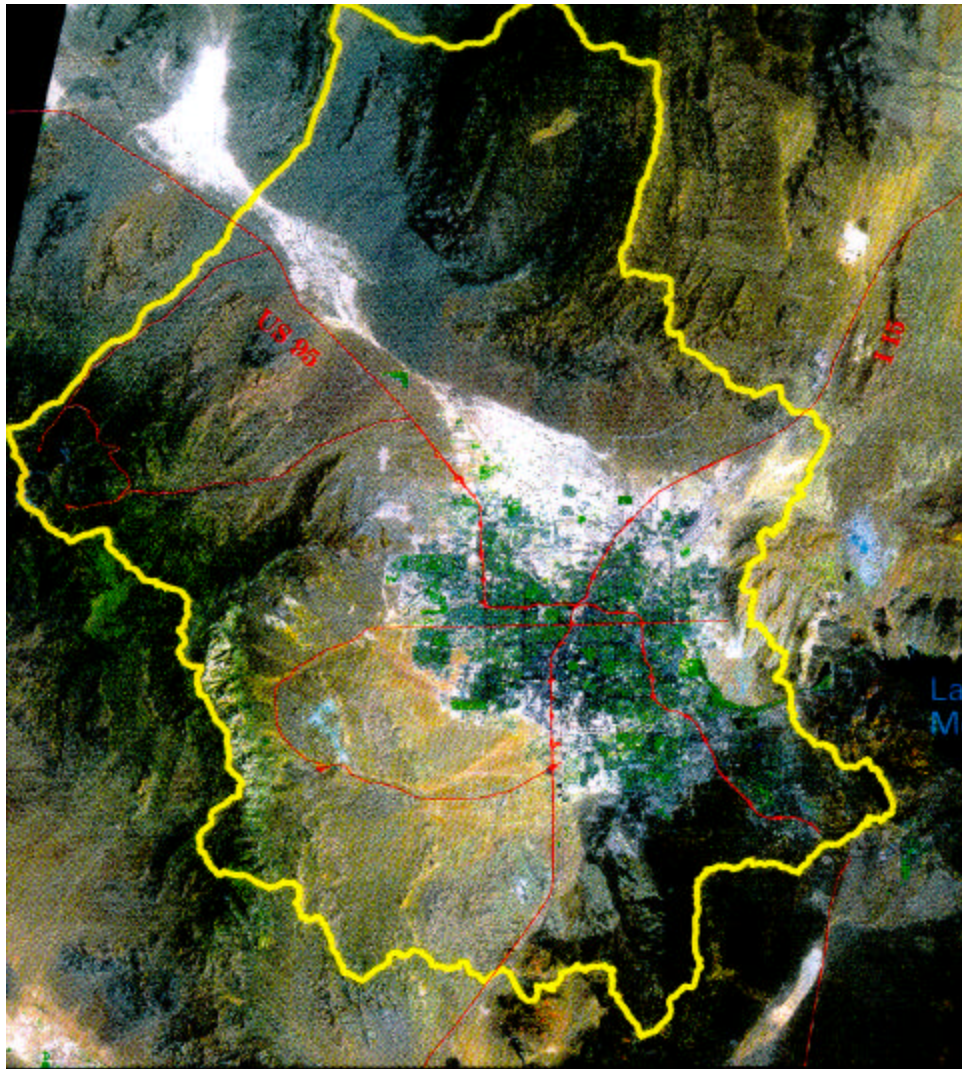
Brenda L. Pohlmann  
Perchlorate Occurrence in  
Nevada

Environmental Scientist, Supervisor  
State of Nevada  
Division of Environmental Protection  
Las Vegas, Nevada

# Colorado River Basin



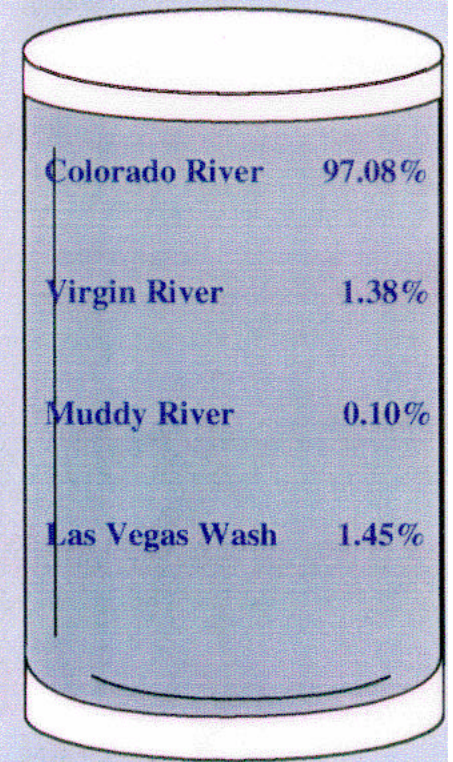
\* Units in millions  
acre-feet/year



Satellite Image of Las Vegas Valley, Nevada  
Bands 7 4 2 June, 1996

10 0 10 20 Miles

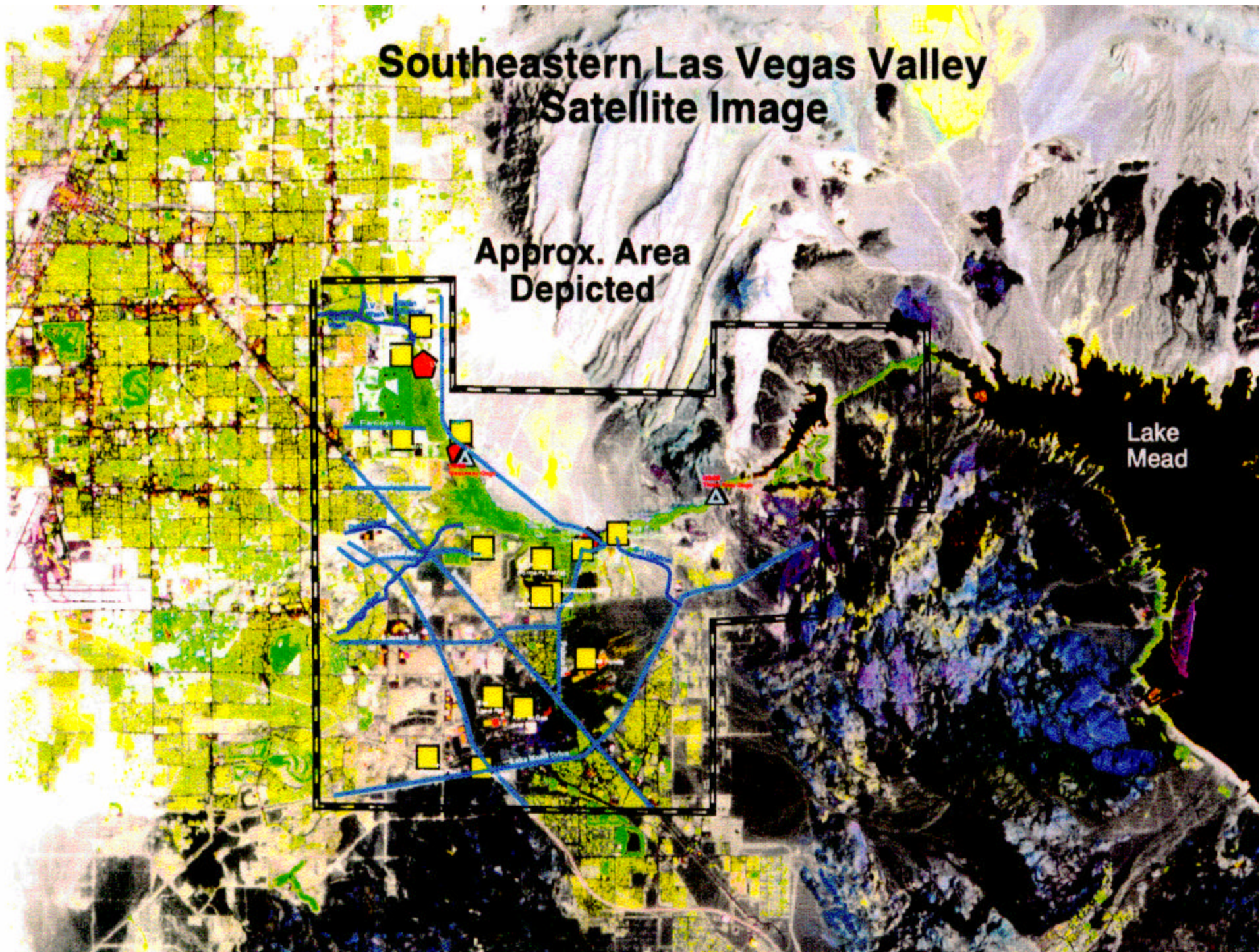
# Water Source Now



# Southeastern Las Vegas Valley Satellite Image

Approx. Area  
Depicted

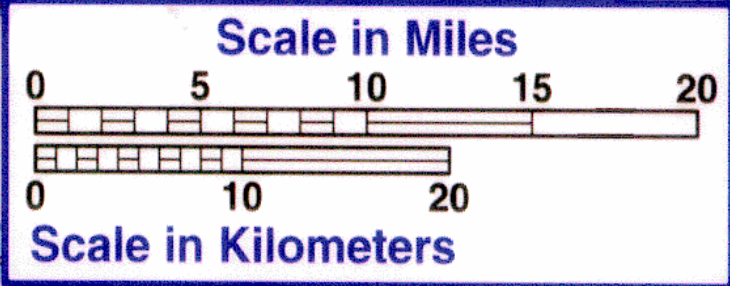
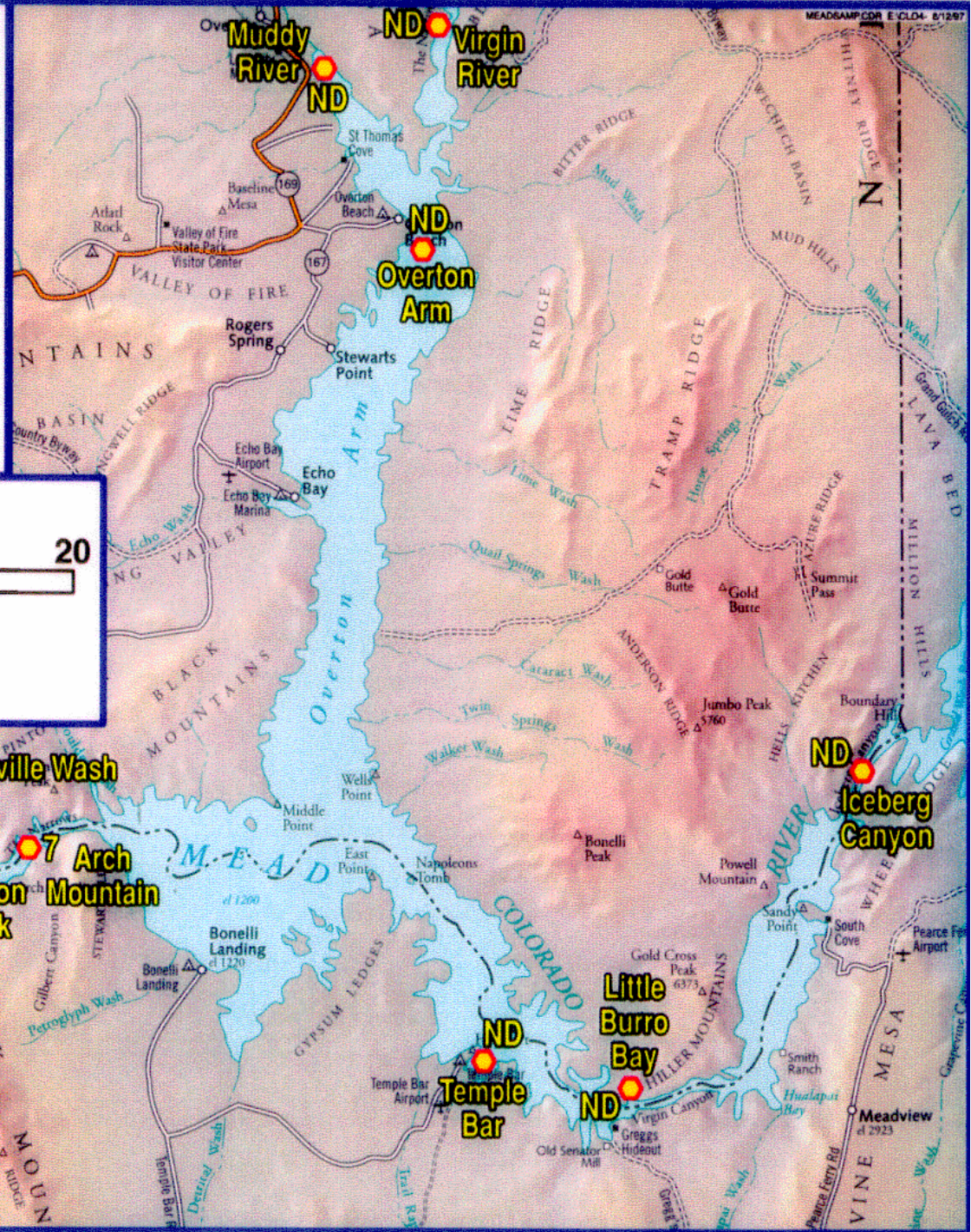
Lake  
Mead



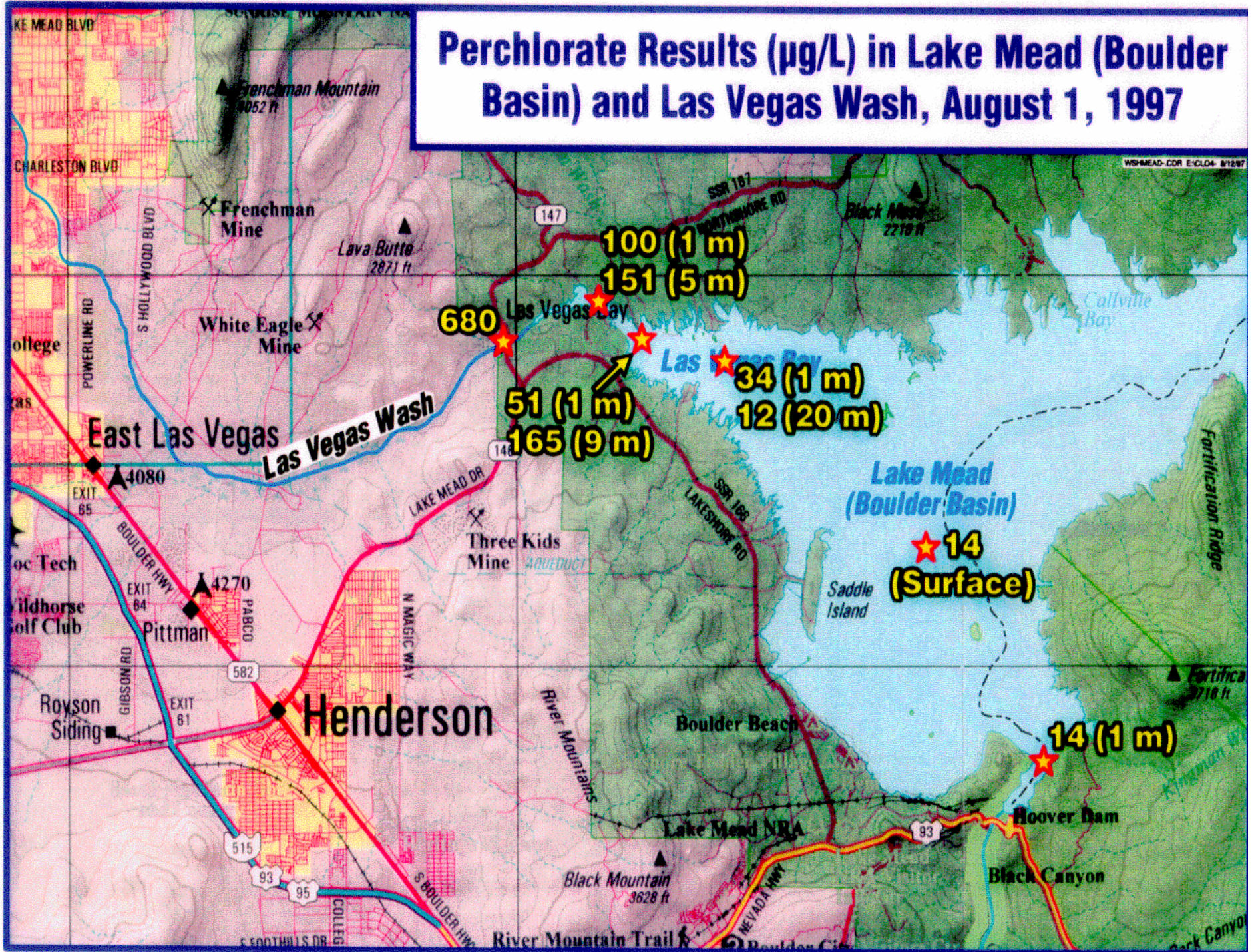
# July 1997 Lake Mead Perchlorate Results ( $\mu\text{g/L}$ )

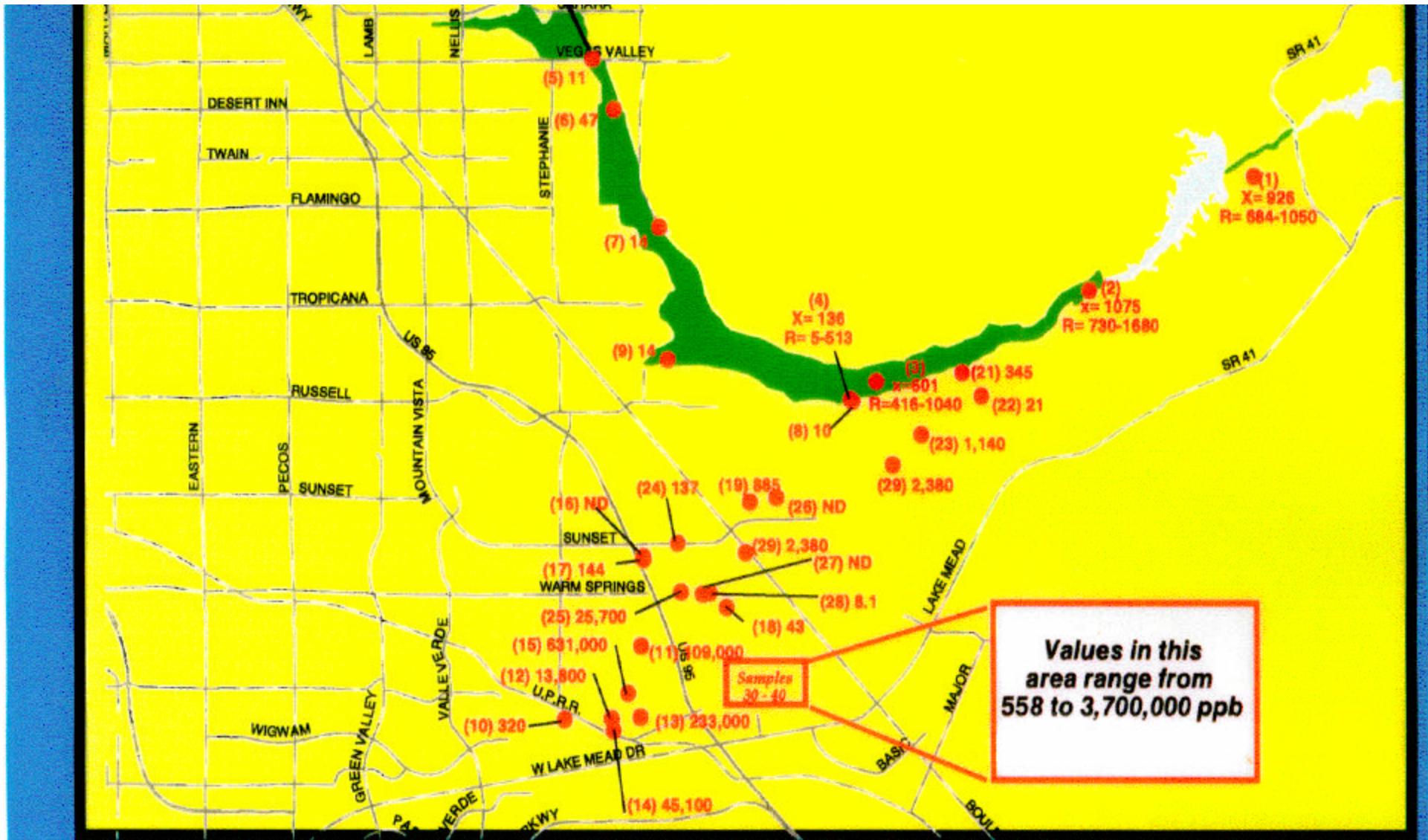
Sampled July 23 & 24, 1997

Las Vegas Wash--86	Arch Mountain--7
Las Vegas Bay--42	Overton Arm--ND
Black Island--19	Muddy River--ND
Hoover Dam--15	Virgin River--ND
Beacon Rock--12	Temple Bar--ND
Callville Bay--12	Little Burro Bay--ND
Callville Wash--11	Iceberg Canyon--ND
West End Wash--11	(ND = Not detected)



# Perchlorate Results ( $\mu\text{g/L}$ ) in Lake Mead (Boulder Basin) and Las Vegas Wash, August 1, 1997





## Results of Perchlorate Sampling

All results reported in parts per billion

(30) = sample location





# THREE PHASE INVESTIGATION

## Phase I

- source area identification
- regional groundwater impacts

## Phase II

- compile existing groundwater and lithologic information
- identify data gaps
- complete hydrogeologic investigation defining groundwater flow paths to wash
- research viable remedial technologies

## Phase III

- design and implement remediation system designed to intercept groundwater before reaching Las Vegas Wash

# Las Vegas Wash



- Major Washes
- Major Roads
- USGS Gaging Points
- Point of Interest
- Outfall Location



