


1

Layers Included in the Mapper

- **RE-Powering Sites**
 - Screened Sites
 - Completed Project
- **Geographic Boundaries**
 - State
 - Counties
 - American Indian Reservations
 - Superfund Sites
 - Superfund Operable Units
 - Superfund Institutional Control
- **Infrastructure**
 - Electric Substations
 - Electric Transmission Lines
 - Power Plants
 - Transportation
- **Physical Site Characteristics**
 - Land Cover
 - Slope/Hillshade
- **Renewable Energy Resources**
 - Solar
 - Wind
 - Biomass
- **Electricity (Grid) Management/Planning Boundaries**
 - Electric Retail Service
 - NERC Regions
 - Control Area (Balancing Authorities)
 - Independent System Operators
- **Demographic Information (from EJScreen)**


2



3 | Polling Question



Was this demonstration helpful?

- Very helpful
- Sort of helpful
- Not helpful at all



3

3



6 | Questions?

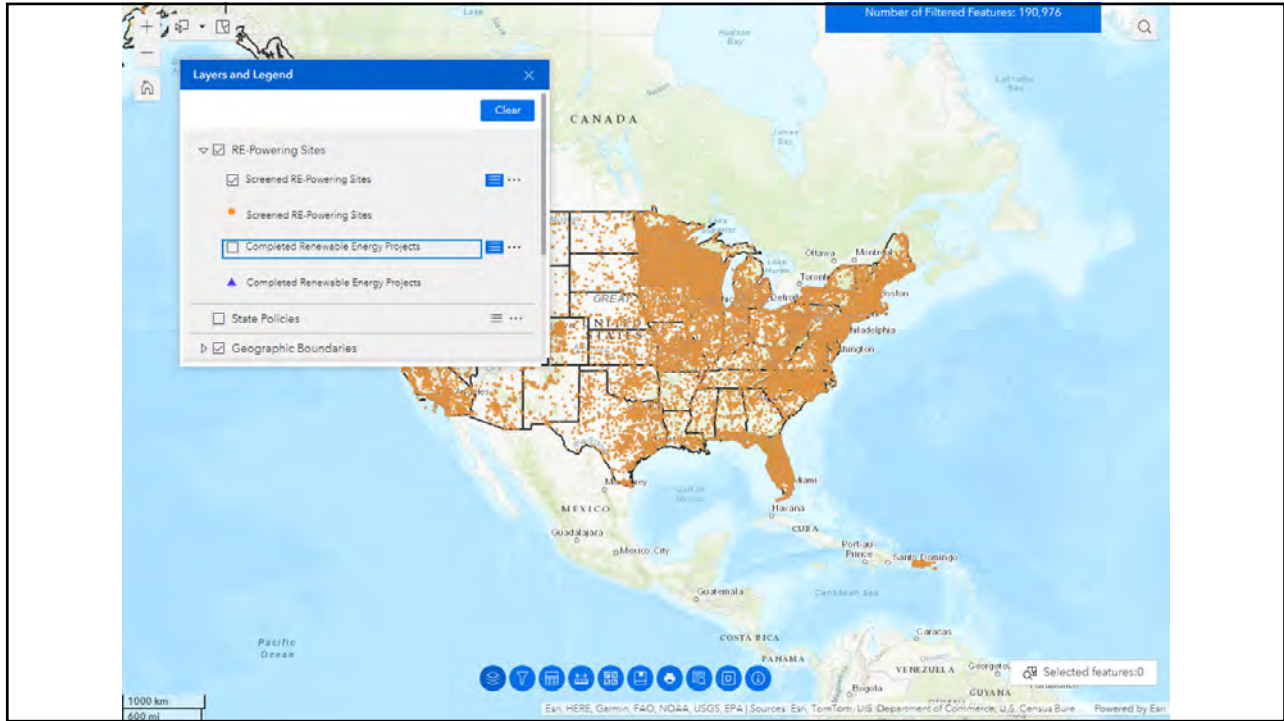
RE-Powering Home: <https://www.epa.gov/re-powering>

Mapper: <https://www.epa.gov/re-powering/how-identify-sites#looking> or <https://geopub.epa.gov/repoweringApp/>

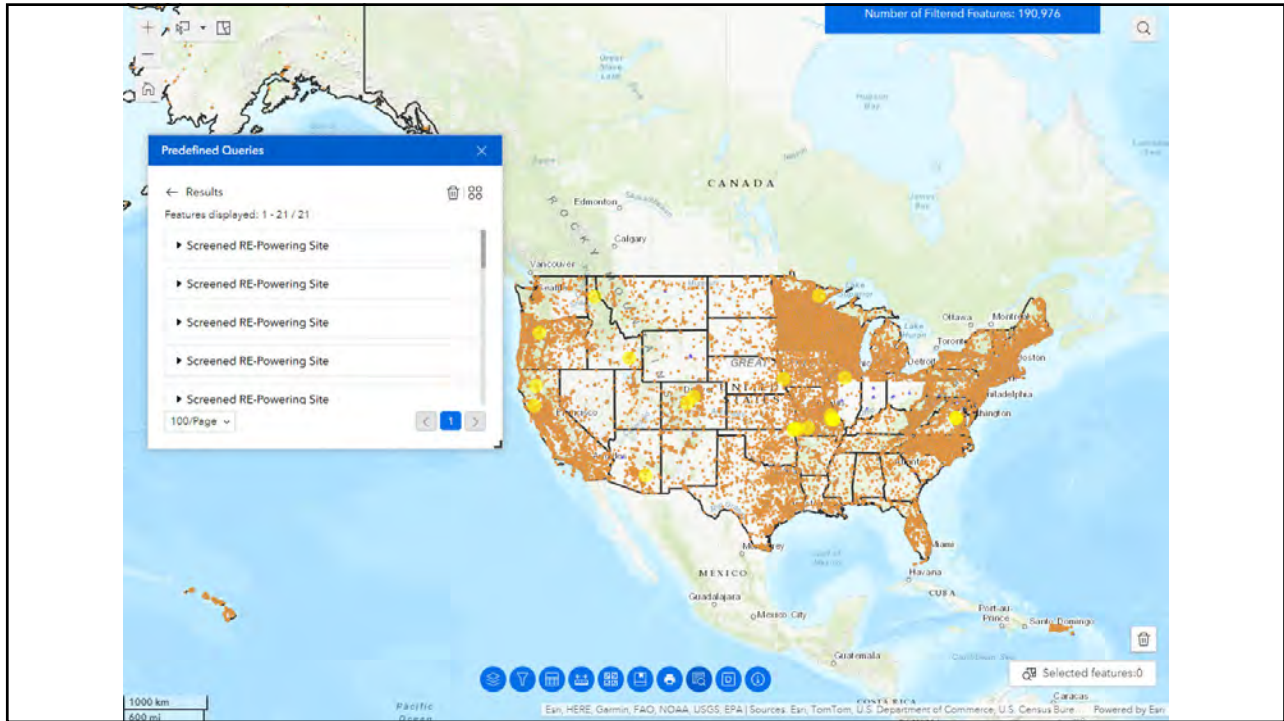
Mapper User Guide: <https://www.epa.gov/re-powering/mapper-technical-document>

Mapper Fact Sheet: <https://www.epa.gov/re-powering/re-powering-mapper-fact-sheet>

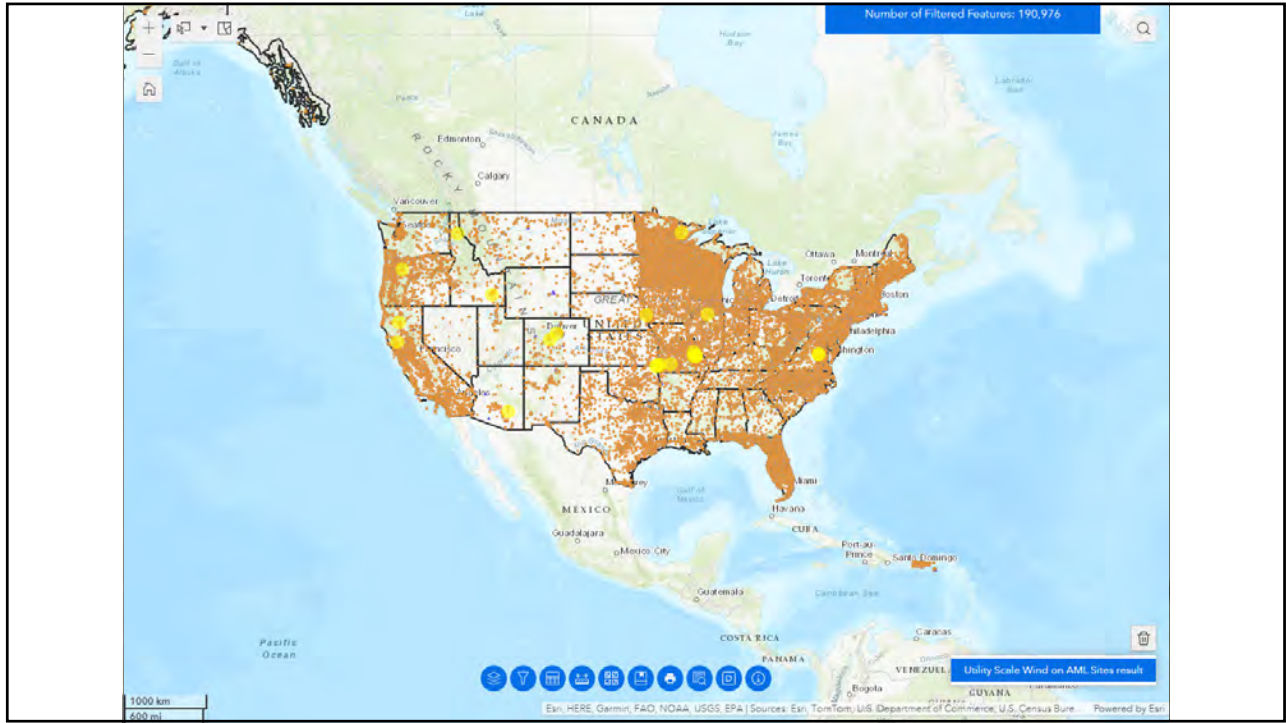
4



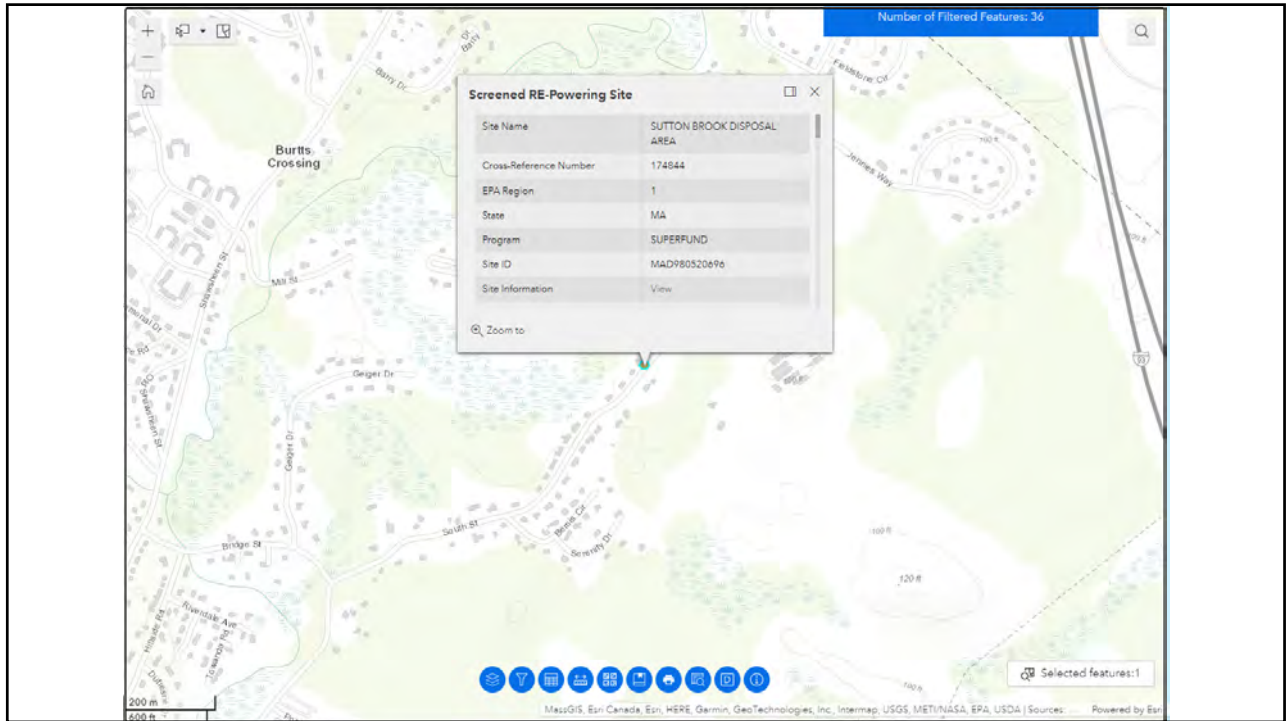
5



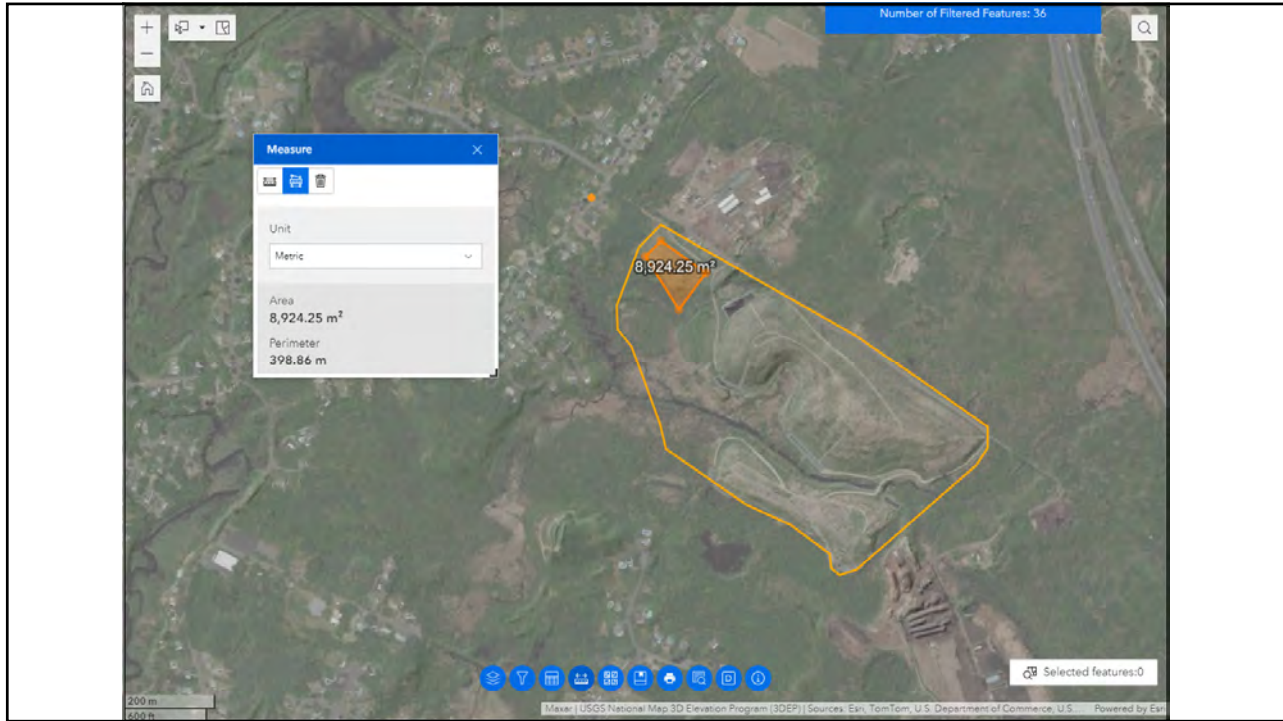
6



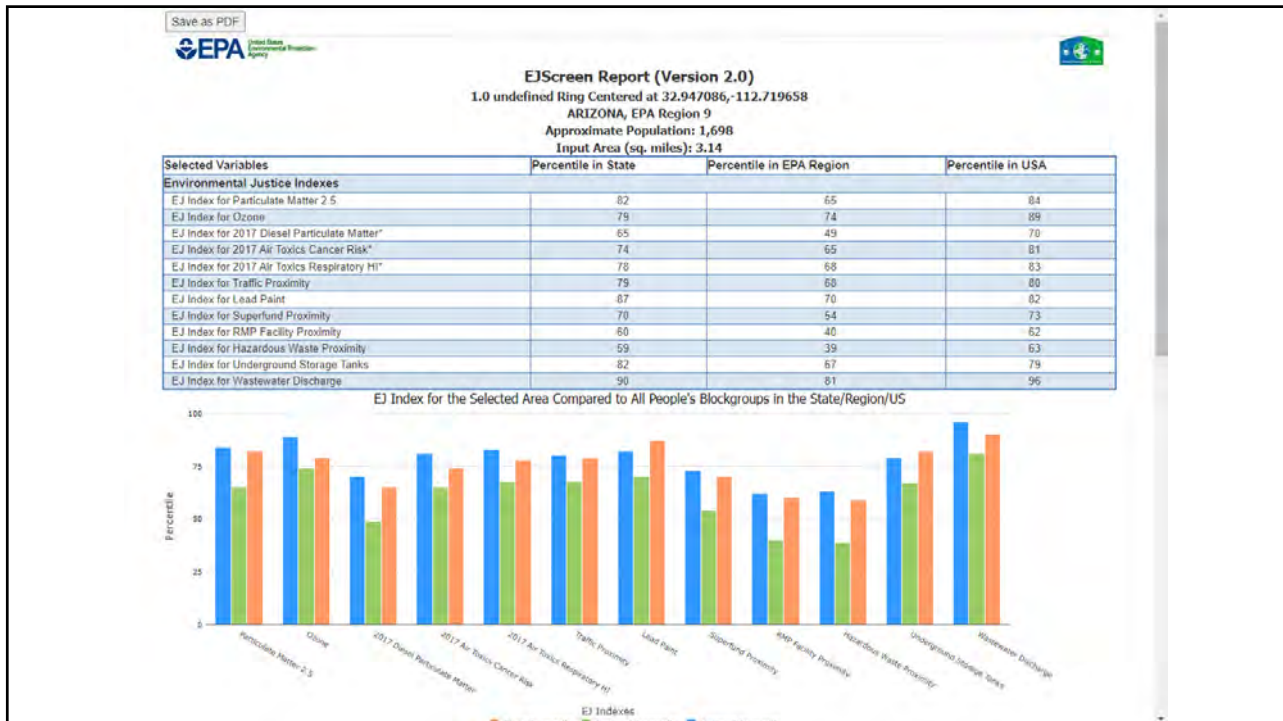
7



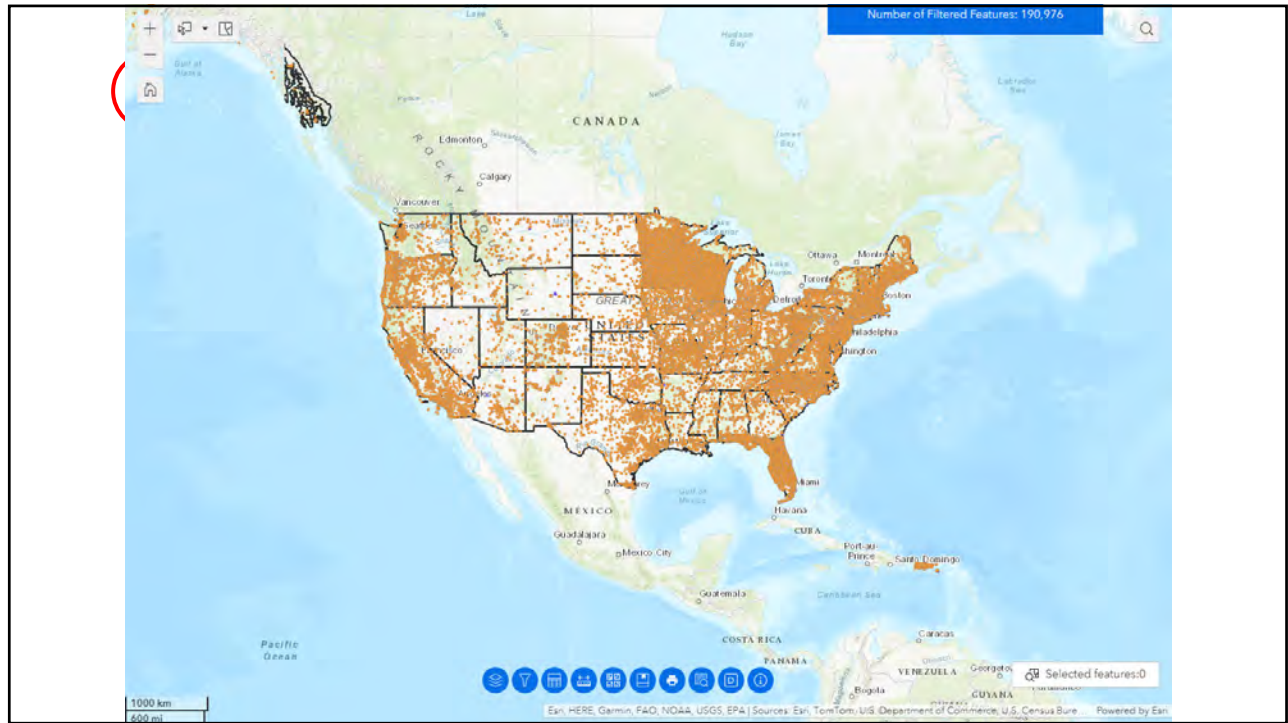
8



9



10



13