

Surfactant Enhanced DNAPL Source Zone Remediation: Results of a Field Demonstration and Implications for Bioavailability

**Linda M. Abriola
The University of Michigan
Ann Arbor**

*Presented at:
In Situ Treatment of Groundwater Contaminated with Non-Aqueous Phase
Liquids: Fundamentals and Case Studies
Chicago, IL
December 10-12, 2002*

Project Team

Project Director: Peter Adriaens (UM)
SEAR Sub-Project Director: Linda M. Abriola (UM)
Project Coordinator: Jack Lendvay (USF)

SEAR Co-Principal Investigators

Kim F. Hayes (UM)
Tohren Kibbey (U OK)
Erik Petrovskis (Geotrans)
Kurt D. Pennell (GA Tech)
Klaus Rathfelder (GeoSyntec)

Additional SEAR Project Personnel

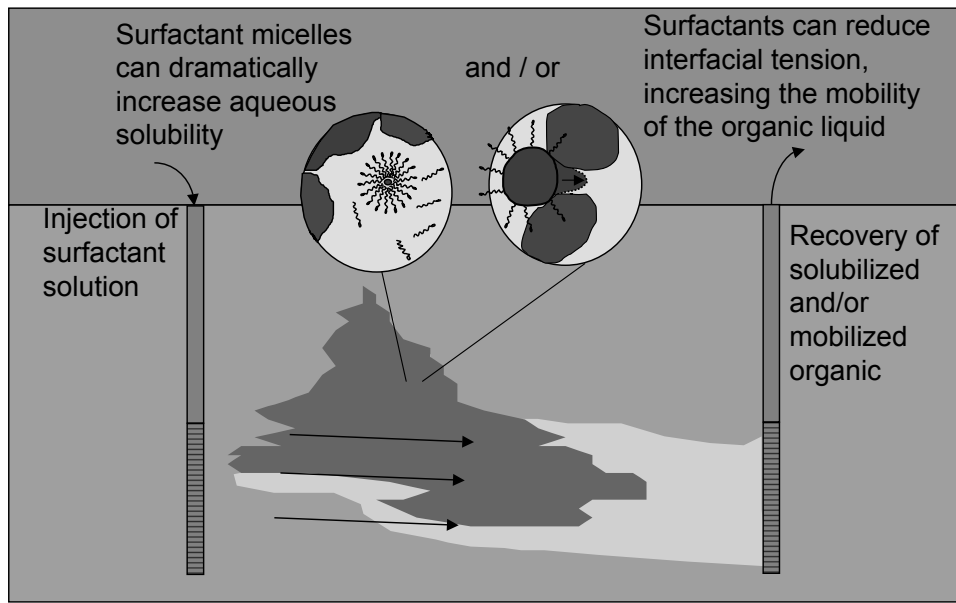
Peter Brink (UM)
Gary Daniels (Geotrans)
Chad Drummond (MWH)
Matt Gamache (UM)
Ernie Hahn (UM)
Hsi Lan Hsu (UM)
Larry Lemke (UM)
Andrew Ramsburg (GA Tech)
Jodi Ryder (UM)
Tom Yavaraski (UM)

2

Research Sponsors

- US EPA Great Lakes and Mid-Atlantic Hazardous Substance Research Center
- Michigan Department of Environmental Quality

Surfactant Enhanced Aquifer Remediation



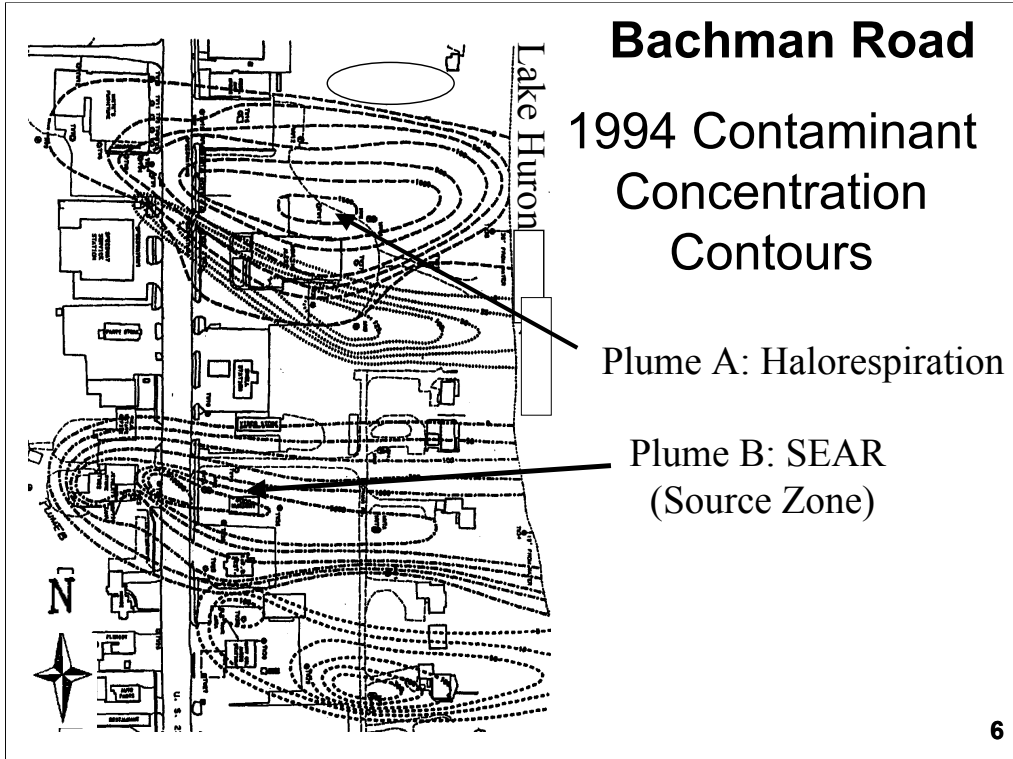
Overview of SEAR – targeted towards removal NAPLs and DNAPLs which are the source regions for contaminant plumes.

Two removal mechanisms: solubilization and mobilization

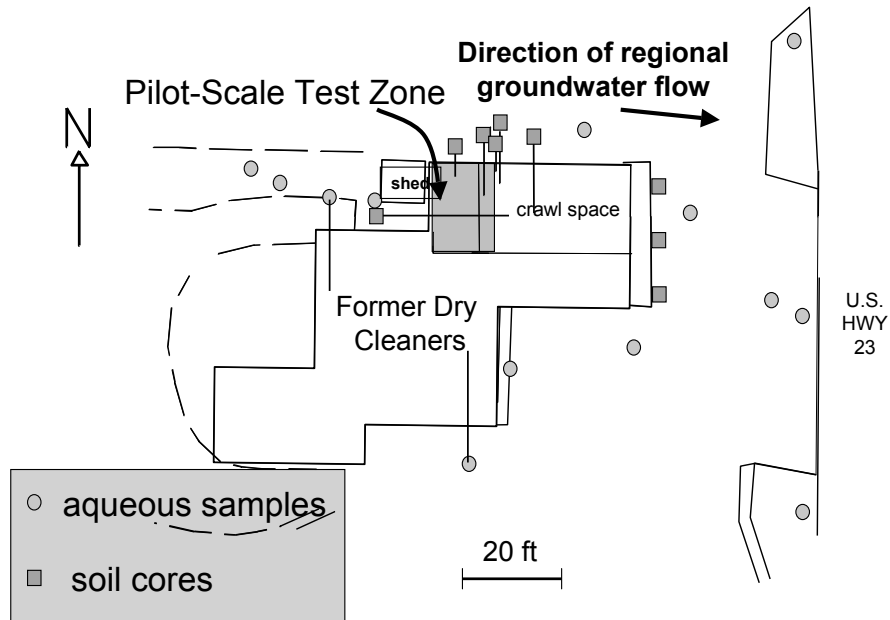
Bachman Road Site



5



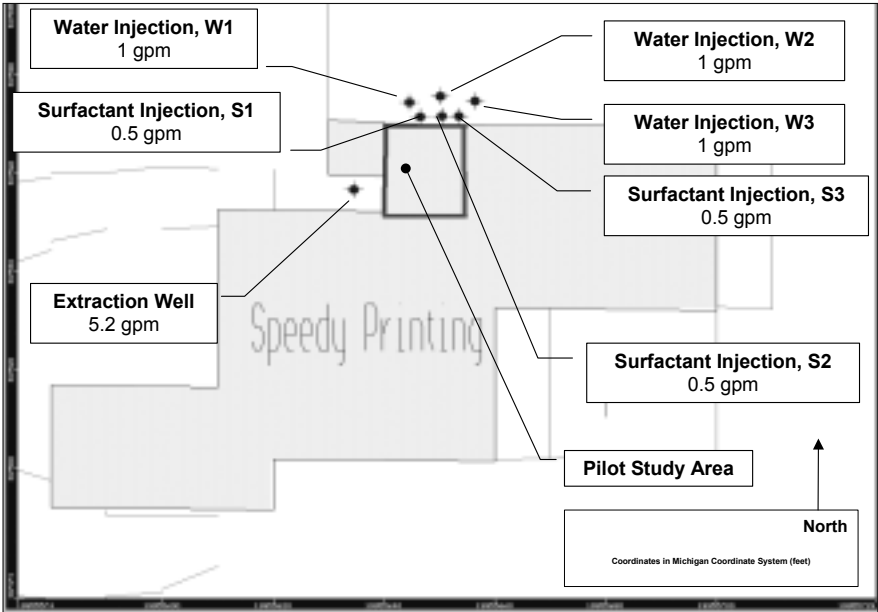
Site Characterization



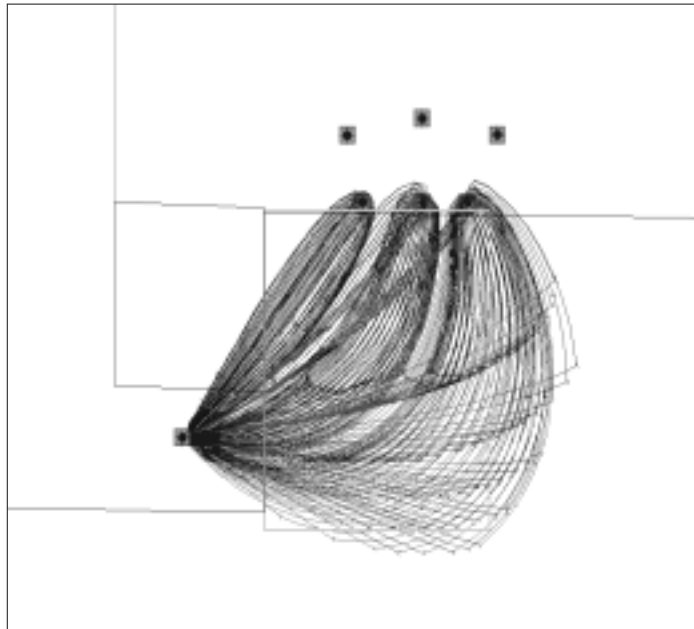
PCE Source Area



Pilot Test Design

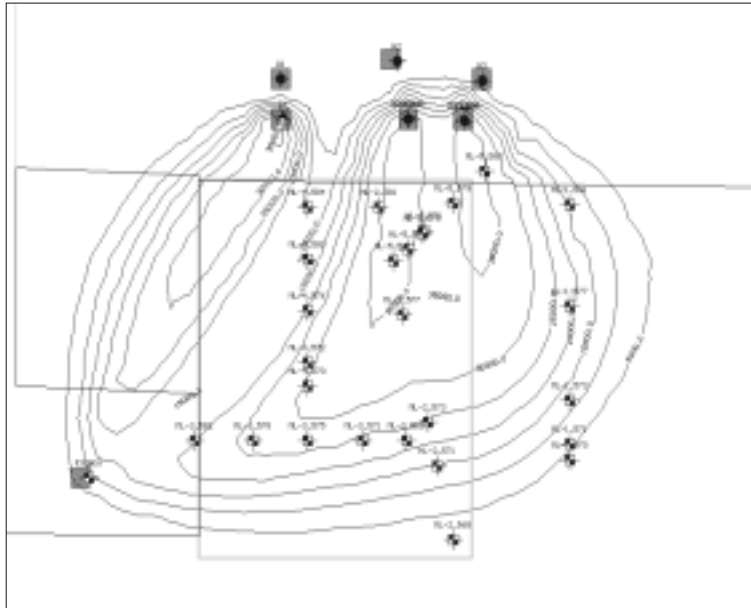


Simulated flowlines (upper layer)



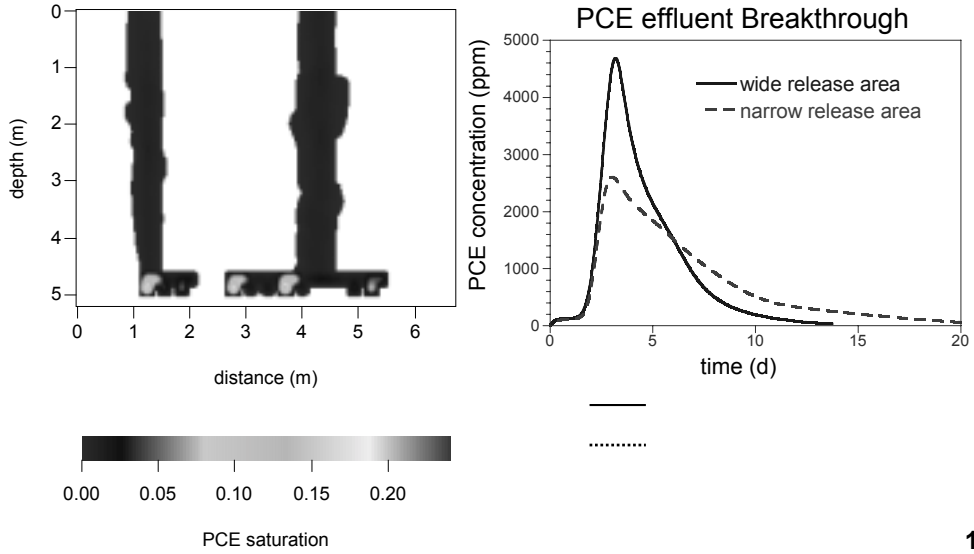
10

Simulated surfactant concentration (5 days of injection)



11

Simulated PCE Distribution and Recovery



12

Conclusions from Pre-test Modeling

- Pilot test design should achieve desired sweep
- Even for this relatively homogeneous formation, spatial variability in texture influences mass distribution and remediation efficiency
- NAPL recovery strongly depends upon the hydraulic conductivity distribution and source release history

13

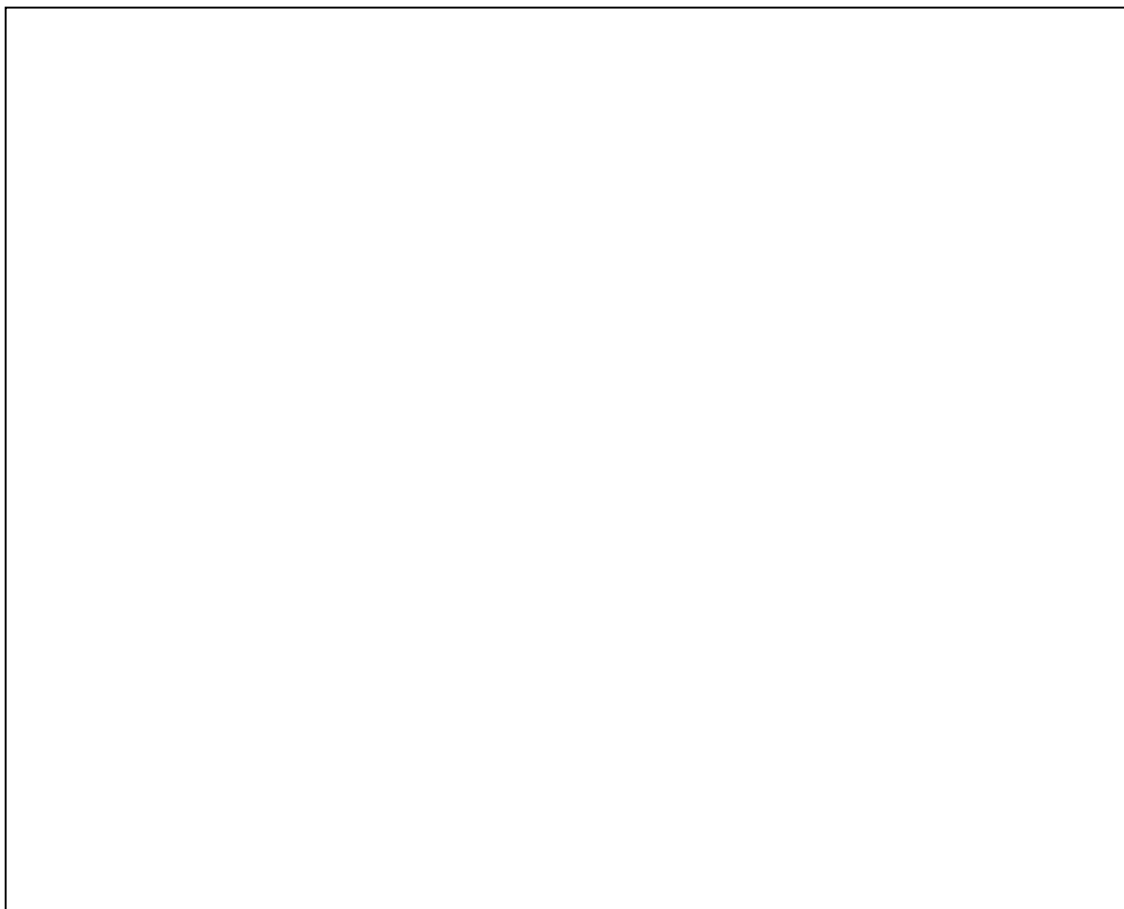
Installation of Multi-level Samplers



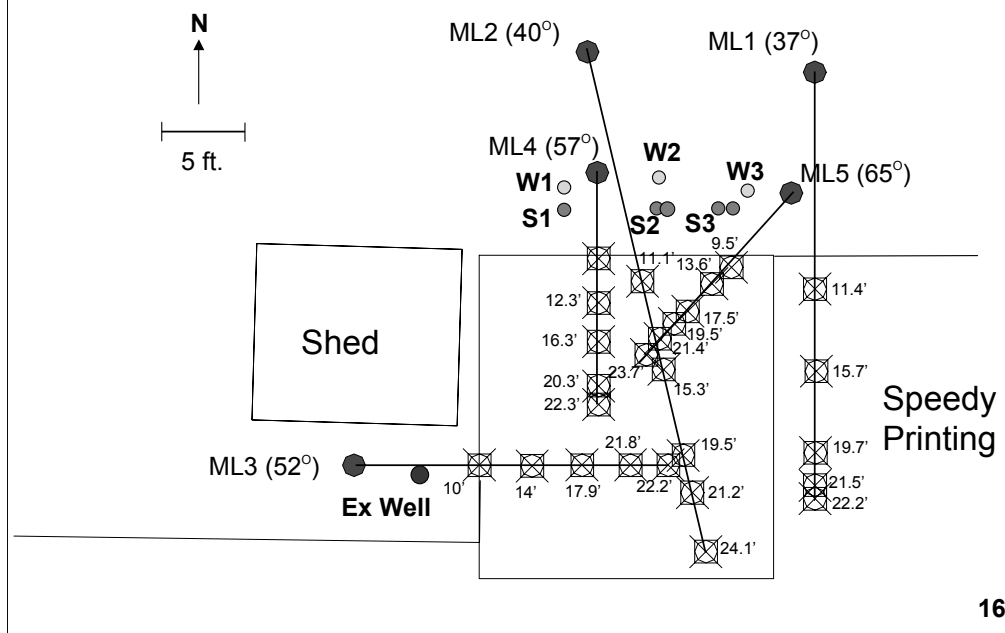
14



Top View of Multi-Level Monitoring Well



Location of Multi-Level Sampling Points



Injection Flow Control System



17

Injection/Mixing Tanks



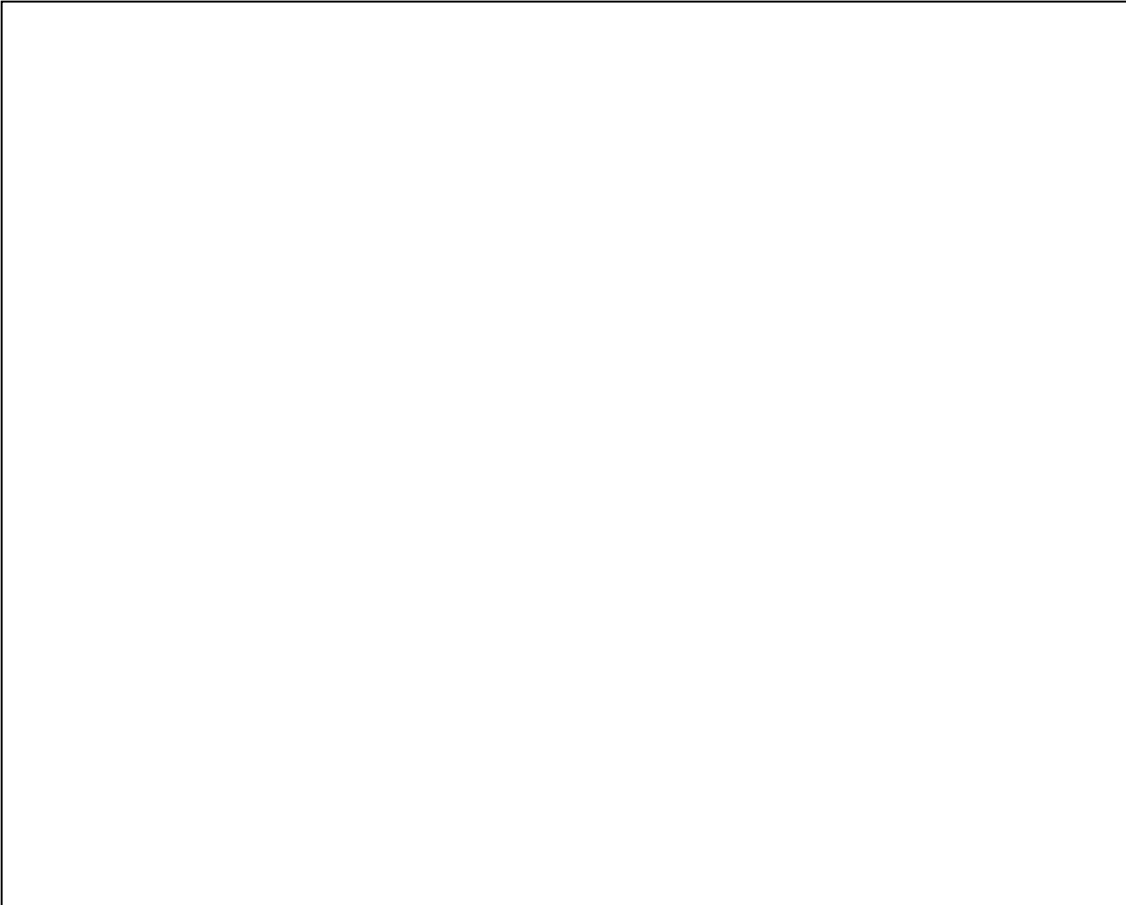
18



55 Gallon Drums of Tween 80



19



Cross-Flow Sieve Tray Air Stripping System



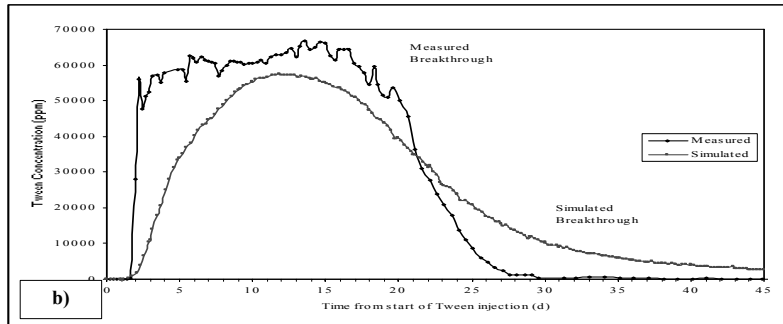
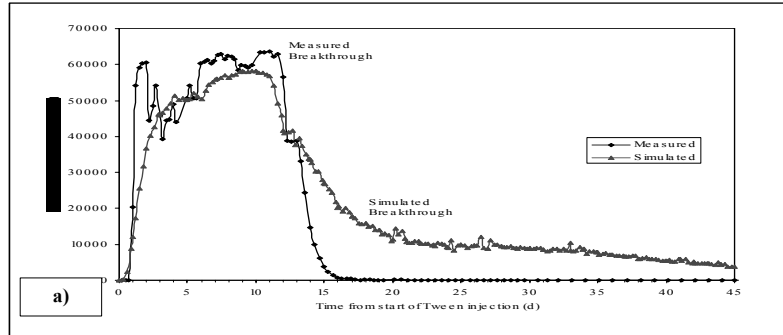
20

Sample Collection

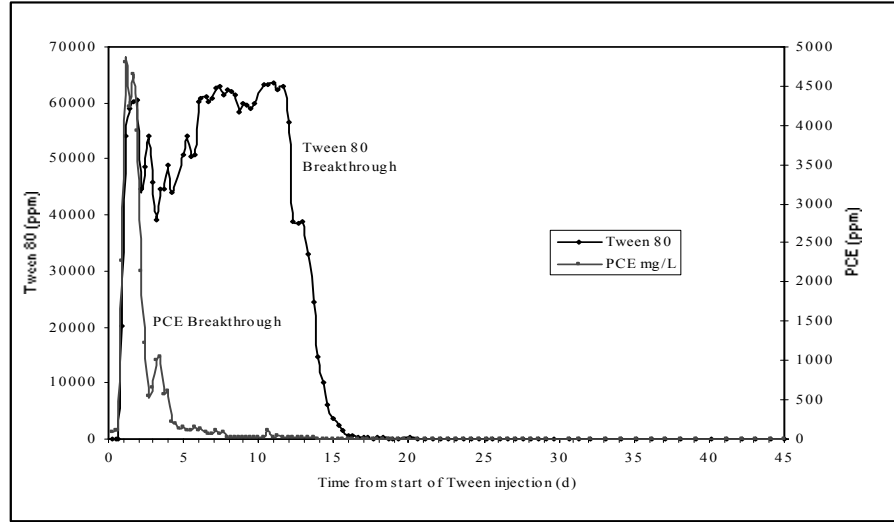


21

Simulated and Measured Surfactant Breakthrough at Two Observation Points

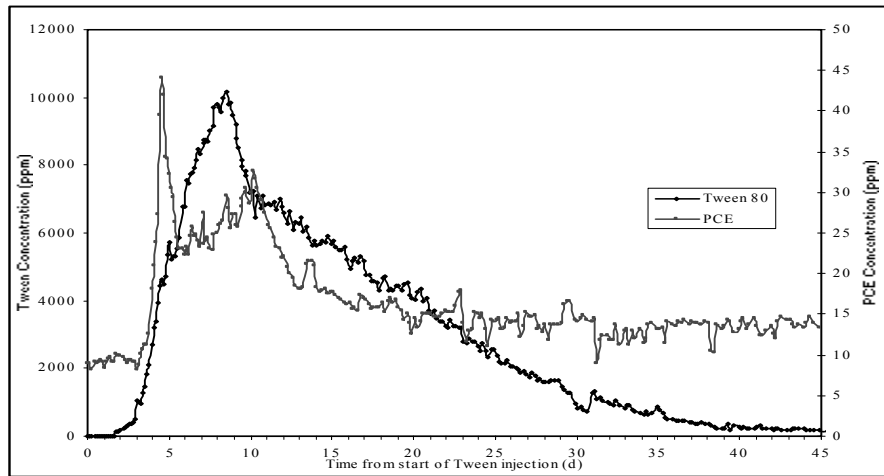


Surfactant Breakthrough and Observed PCE Concentrations (ML5E)



23

Extraction Well Recovery of Surfactant and PCE



24

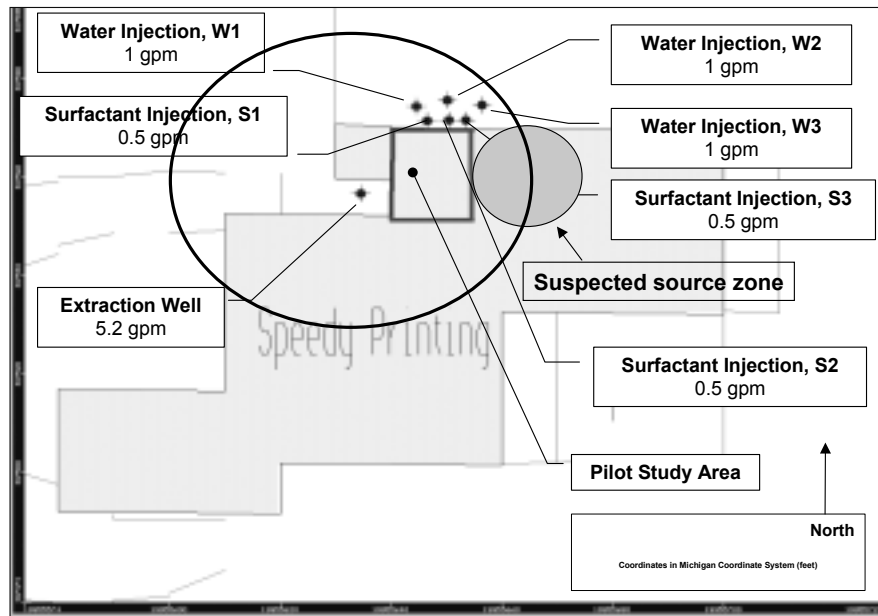
Source Zone Monitoring (ML5)

(mg/L)

Date	Comments	ML-5A (9.5')		ML-5B (13.6')		ML-5C (17.5')		ML-5D (19.5')		ML-5E (21.4')	
		PCE	Tween	PCE	Tween	PCE	Tween	PCE	Tween	PCE	Tween
6/30/2000	Start of surfactant injection	0.35	NQ<311	45.31	NQ<311	48.00	NQ<311	0.89	NQ<311	98.84	NQ<311
8/15/2000	Last day of SEAR test	NQ<5.14	NQ<90	NQ<5.14	NQ<90	NQ<5.14	NQ<90	NQ<5.14	NQ<90	NQ<5.14	NQ<90
8/29/2000	2 weeks after test	NQ<1	122.23	NQ<1	103.71	NQ<0.63	NQ<90			NQ<0.63	NQ<90
10/10/2000	56 days after test	0.0845	63.72	0.4566	93.96	0.8823	54.13	0.0888	64.93	0.9368	63.87
5/10/2001	270 days after test	0.288	NQ<16	0.052	21.85	0.10	NQ<16	NQ<.015	NQ<16	0.19	NQ<16
11/13/2001	450 days after test	0.0220	NQ<50	0.1700	NQ<50	0.2400	NQ<50	0.0200	NQ<50	0.4000	NQ<50

25

Pilot Test Configuration



26

Source Zone Monitoring for Degradation Products (ML5) – Nov 2001

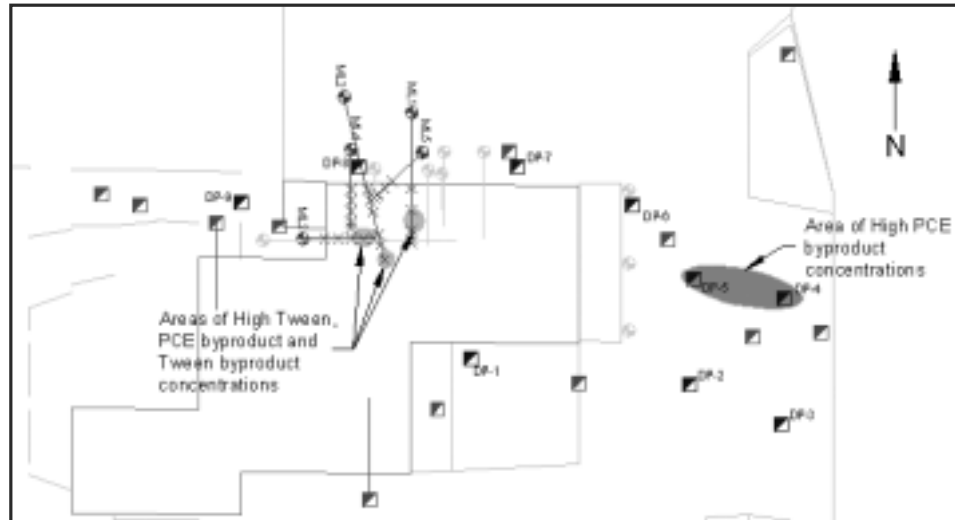
(mg/L)

Date	Comments	ML-5A (9.5')	ML-5B (13.6')	ML-5C (17.5')	ML-5D (19.5')	ML-5E (21.4')
		mg/L	mg/L	mg/L	mg/L	mg/L
11/13/01	Tetrachloroethylene (PCE)	0.022	0.17	0.24	0.02	0.4
11/13/01	Trichloroethylene (TCE)	0.12	0.052	0.031	0.006	0.041
11/13/01	cis - 1,2 - Dichloroethene	0.47	0.57	0.11	0.017	0.12
11/13/01	trans - 1,2 - Dichloroethene	NQ<.001	NQ<.001	NQ<.001	NQ<.001	NQ<.001
11/13/01	Vinyl Chloride	NQ<.001	NQ<.001	NQ<.001	NQ<.001	NQ<.001
11/13/01	Tween	NQ<50	NQ<50	NQ<50	NQ<50	NQ<50
11/13/01	acetate (mM)	NQ<0.1	0.49	NQ<0.1	NQ<0.1	NQ<0.1

27

Post Test Characterization

November 2001



28

Conclusions

- Breakthrough curves indicate good sweep efficiency within the treatment zone
- 95% of the injected surfactant mass was recovered
- 19 liters of PCE were recovered during test
- Analysis of partitioning alcohols suggest very low saturations within the treatment zone
- Concentration tailing in extraction well suggests additional source area within capture zone
- Source zone concentrations reduced by approximately two orders of magnitude
- Evidence of post-test microbial activity enhancement within residual source zone

29

Ongoing Work

- Monitoring of PCE and degradation products
- Further site characterization
- Full-scale SEAR design
- Exploration of feasibility of halorespiration stimulation in treated zone

30

References

- Drummond, C.D., L.D. Lemke, K.M. Rathfelder, E.J. Hahn, and L.M. Abriola, "Simulation of surfactant-enhanced PCE recovery at a pilot test field site," in *Treating Dense Nonaqueous-Phase Liquids (DNAPLs): Remediation of Chlorinated and Recalcitrant Compounds* (G.B. Wickramanayake, A.R. Gavaskar, and N. Gupta eds.), 77-84, Battelle Press, Columbus, 2000.
- Abriola, L.M., C. Drummond, L. Lemke, K. Rathfelder, K. Pennell, E. Petrovskis, and G. Daniels, "Surfactant enhanced aquifer remediation: application of mathematical models in the design and evaluation of a pilot test," In *Groundwater Quality: Natural and Enhanced Restoration of Groundwater Pollution*, Thornton, S.F. and S.E. Oswald, eds, *IAHS Publication 275*, 303-310, Wallingford, Oxfordshire, UK, 2002.